



## EMOTION

CREATIVITY IN MOTION

Powered By HIGH END SYSTEMS

SKU# EMO101

The new EMOTION™ is a compact high output lightweight plug and play digital projector moving head lighting fixture featuring the OSRAM 240W UHP >80CRI 6,700K lamp producing 4,000 ANSI lumens and native 1024 x 768 support. Key features include an internal 64GB solid-state hard drive media server with royalty free digital gobo and video images, live background effects and allows custom content to be easily uploaded remotely via the PC based CMA application. Included Collage Generator™ allows for seamless projection arrays (2-16 fixtures) and variable edge blending. CMY and RGB color mixing, digital and optical zoom, motorized focus, mechanical shutter, dimmer, 540° pan, and 240° tilt control via DMX / Art-NET, (2) USB 3.0 ports, 5pin DMX, RJ45 EtherCON, and power in/out, and a multi-voltage universal auto switching power supply



ELATION | EMOTION™ | Product Specification Sheet



### FEATURES

- Compact High Output Digital Projector Moving Head
- OSRAM 240W UHP Lamp - 3,000 Average Hour Lamp Life\*
- 4,000 ANSI Lumens / Native 1024 x 768 (XGA) DLP / DMD
- Internal 64GB Solid-State Hard Drive Media Server
- Elation Gobo Catalog Included (Royalty Free)
- 255 Video Images Included (Royalty Free)
- 40 Live / Background Effects and Color Control
- Easy Custom Content Upload via CMA Application
- DMX Control via 5pin DMX or Ar-NET
- Digital and Optical Zoom / Motorized Focus
- CMY + RGB Color Mixing / Mechanical Shutter / Dimmer
- Collage Generator™
- Variable Edge Blending

Powered By:  
HIGH END SYSTEMS



a Barco company

Specifications are subject to change without notice ©Elation Professional 02/03/16

Elation Professional USA | 6122 S. Eastern Ave. | Los Angeles, CA. 90040  
323-582-3322 | 323-832-9142 fax | www.elationlighting.com | info@elationlighting.com

Elation Professional B.V. | Junostraat 2 | 6468 EW Kerkrade, The Netherlands  
+31 45 546 85 66 | +31 45 546 85 96 fax | www.elationlighting.eu | info@elationlighting.eu

**PRODUCT SPECIFICATIONS**

**PROJECTOR SPECIFICATIONS**

OSRAM UHP 240W Lamp  
 4,000 ANSI Lumens, >80CRI 6,700K  
 3,000 Hour Average Lamp Life\* (6,000 Hours ECO Mode)

\*LED Life may vary depending on several factors including but not limited to: Environmental Conditions, Power/Voltage, Usage Patterns (On-Off Cycling), Control and Dimming.

Aspect Ratio: 4:3 Native (16:9 Compatible)

Resolution: XGA 1074 x 768

Image Size 30" to 307"

Projection Distance: 3.9' (1.2m) - 32.8' (10m)

Contrast Ratio: 15,000 : 1

Display Technology: DLP DMD Chip

1 Billion Colors (10bit)

**EFFECTS**

Digital and Optical Zoom, Motorized Focus

CMY / RGB Color Mixing

Mechanical Shutter / Dimmer

Elation Gobo Catalog (Royalty Free)

255 Video Images (Royalty Free)

40 Live / Background Effects and Color Control

28 Transition Effects Between Layers

**COLLAGE GENERATOR™ Software (included)**

This effect enables multiple Elation eMotion™ fixtures to create an array of seamless projections using from 2-16 fixtures. The effect can create vertical, horizontal and central panoramic configurations controlled from a DMX console. Stock, custom, and custom HD **Collage Generator™** content can all be displayed in Collage Mode.

**VARIABLE EDGE BLENDING**

On-the-Fly adjustment of blend overlap between multiple projectors when used in conjunction with any of the **Collage Generator™** Modes. Using this mode gives more flexibility for sizing a collage to a given screen or projection surface, as well as smoother blending if wider blend regions are used.

**CONTROL / CONNECTIONS**

- (2) DMX Channel Modes (32 / 54)
- Dual Layer Media Content Control
- 6 Button Touch Control Panel
- Full Color 180° Reversible LCD Menu Display
- (2) USB 3.0 Ports - Graphics Server Inputs
- 5pin DMX In/Out
- (2) RJ45 Ports - Graphics Server / Art-NET Inputs
- Power In/Out

**SIZE / WEIGHT**

Length: 18.9" (480mm)  
 Width: 15.0" (382mm)  
 Vertical Height: 22.4" (569mm)  
 Weight: 44.0 lbs. (20 kg)

**ELECTRICAL / THERMAL**

AC 100-240V - 50/60Hz  
 350W Max Power Consumption  
 40° - 95°F (5° - 35°C)

**APPROVALS / RATINGS**

CE | cETLus | IP20

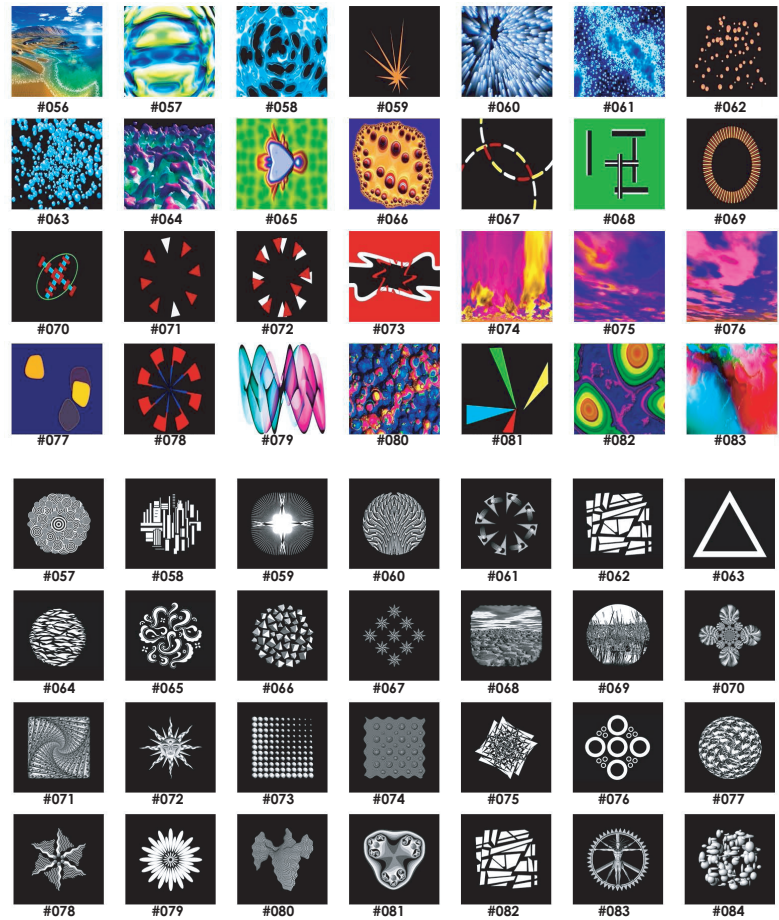


**INSTALLATION**

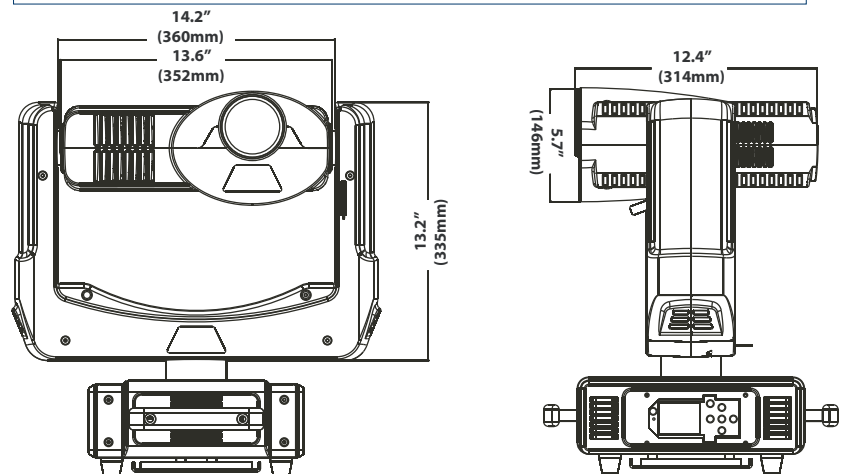
Rigging: Clamps (Not Included)  
 Working Position: Flat Surface / Inverted (180°)

**INCLUDED ROYALTY FREE VIDEO AND GOBO CONTENT\***

\*Sample of Content - Not All Content Listed Below



**DIMENSIONAL DIAGRAMS**



**OPTIONAL ACCESSORIES**

ORDER CODE	ITEM
TRIGGER CLAMP	Heavy Duty Wrap Around Hook Style Clamp
DRCEMO	Dual Road Case For eMotion™
PLC3	3' (1m) PRO Link Cable
CAT6PRO5	5' (1.5m) CAT6 EtherkbaqCable
AC5PDMX5PRO	5 ft. (1.5m) 5pin PRO DMX Cable
	Additional cable lengths available

Specifications are subject to change without notice ©Elation Professional 02/03/16



Elation Professional USA | 6122 S. Eastern Ave. | Los Angeles, CA. 90040  
 323-582-3322 | 323-832-9142 fax | www.elationlighting.com | info@elationlighting.com

Elation Professional B.V. | Junostraat 2 | 6468 EW Kerkrade, The Netherlands  
 +31 45 546 85 66 | +31 45 546 85 96 fax | www.elationlighting.eu | info@elationlighting.eu