



IP TESTER

User Manual

©2018 **ELATION PROFESSIONAL** all rights reserved. Information, specifications, diagrams, images, and instructions herein are subject to change without notice. Elation logo and identifying product names and numbers herein are trademarks of Elation. Copyright protection claimed includes all forms and matters of copyrightable materials and information now allowed by statutory or judicial law or hereinafter granted. Product names used in this document may be trademarks or registered trademarks of their respective companies and are hereby acknowledged. All non-Elation brands and product names are trademarks or registered trademarks of their respective companies.

ELATION PROFESSIONAL and all affiliated companies hereby disclaim any and all liabilities for property, equipment, building, and electrical damages, injuries to any persons, and direct or indirect economic loss associated with the use or reliance of any information contained within this document, and/or as a result of the improper, unsafe, insufficient, and negligent assembly, installation, rigging, and operation of this product.

ELATION PROFESSIONAL USA

6122 S. Eastern Ave. Los Angeles, CA. 90040

323-582-3322 | Fax 323-832-9142 | www.elationlighting.com | sales@elationlighting.com

ELATION PROFESSIONAL B.V.

Junostraat 2 | 6468 EW Kerkrade, The Netherlands

+31 45 546 85 66 | Fax +31 45 546 85 96 | www.elationlighting.eu | info@elationlighting.eu

ELATION PROFESSIONAL Mexico

AV Santa Ana 30 Parque Industrial Lerma, Lerma, Mexico 52000

+52 (728) 282-7070

DOCUMENT VERSION

Please check www.elationlighting.com for the latest revision/update of this guide.

| Date | Document Version | Software Version ≥ | Notes |
|-------------|-------------------------|---------------------------|--|
| 11/09/18 | 1 | 1.0.2 | Initial release. |
| 07/15/19 | 1.2 | 1.0.2 | Updated included temporary vent plug info. |

Europe Energy Saving Notice

Energy Saving Matters (EuP 2009/125/EC)

Saving electric energy is a key to help protecting the environment. Please turn off all electrical products when they are not in use. To avoid power consumption in idle mode, disconnect all electrical equipment from power when not in use. Thank you!

CONTENT

| | |
|--|----|
| GENERAL INFORMATION | 4 |
| LIMITED WARRANTY (USA ONLY) | 5 |
| SAFETY GUIDELINES | 6 |
| OVERVIEW | 7 |
| RECOMMENDED TOOLS | 8 |
| CONNECTIONS | 9 |
| TESTING FUNCTIONS | 11 |
| TESTING EXAMPLE: ELATION PROTEUS HYBRID™ | 15 |
| PC SOFTWARE – INSTALLATION | 18 |
| PC SOFTWARE – OPERATION | 21 |
| UPDATING IP TESTER SOFTWARE FROM PC SOFTWARE | 29 |
| CASE DIMENSIONS | 31 |
| OPTIONAL ACCESSORIES | 31 |

GENERAL INFORMATION

INTRODUCTION

Please read and understand the instructions in this manual carefully and thoroughly before attempting to operate this device. These instructions contain important safety and use information.

UNPACKING

Every device has been thoroughly tested and has been shipped in perfect operating condition. Carefully check the shipping carton for damage that may have occurred during shipping. If the carton is damaged, carefully inspect the device for damage, and be sure all accessories necessary to install and operate the device have arrived intact. In the event damage has been found or parts are missing, please contact our customer support team for further instructions. Please do not return this device to your dealer without first contacting customer support. Please do not discard the shipping carton in the trash. Please recycle whenever possible.

BOX CONTENTS

- (1) 3-5 ft Coiled Air Hose/Quick Connect Fitting
- (1) M12 Treaded Brass Nozzle/Push-to-Connect Fitting
- (1) M12x1.5 Hex-Socket Cap-Head A4-70 Stainless Steel Bolt/Washer
- (1) 5 ft Power Cable
- (1) 6 ft USB Cable
- (1) 4GM (min) Micro SD Card

CUSTOMER SUPPORT

Contact ELATION Service for any product related service and support needs. Also visit forums.elationlighting.com with questions, comments or suggestions.

ELATION SERVICE USA - Monday - Friday 8:00am to 4:30pm PST
323-582-3322 | Fax 323-832-9142 | support@elationlighting.com

ELATION SERVICE EUROPE - Monday - Friday 08:30 to 17:00 CET
+31 45 546 85 63 | Fax +31 45 546 85 96 | support@elationlighting.eu

REPLACEMENT PARTS please visit parts.elationlighting.com



I M P O R T A N T N O T I C E !

THIS DEVICE MUST ONLY BE USED BY AN AUTHORIZED ELATION TRAINED SERVICE TECHNICIAN. DO NOT ATTEMPT TO USE THIS DEVICE WITHOUT BEING FULLY TRAINED ON HOW TO USE IT. ANY DAMAGES OR REPAIRS TO THIS DEVICE OR ANY ELATION AND/OR NON-ELATION LIGHTING FIXTURES CONNECTED TO THIS DEVICE RESULTING FROM IMPROPER USE, INCORRECT PRESSURE/VACUUM SETTINGS, AND/OR THE DISREGARD OF THE SAFETY AND OPERATION GUIDELINES IN THIS USER MANUAL VOIDS THE ELATION WARRANTY AND ARE NOT SUBJECT TO ANY WARRANTY CLAIMS AND/OR REPAIRS, AND MAY ALSO VOID THE WARRANTY FOR ANY NON-ELATION LIGHTING FIXTURES.

**CONSULT WITH YOUR RESPECTIVE LIGHTING MANUFACTURER BEFORE USING THIS IP TESTER DEVICE ON NON-ELATION BRAND FIXTURES!
IP TESTER DEVICE SETTINGS CONTAINED IN THIS MANUAL DO NOT APPLY TO NON-ELATION BRAND FIXTURES AND MAY DAMAGE YOUR FIXTURE.
PLEASE CONTACT ELATION SERVICE FOR FURTHER DETAILS.**

LIMITED WARRANTY (USA ONLY)

A. Elation Professional hereby warrants, to the original purchaser, Elation Professional products to be free of manufacturing defects in material and workmanship for a period of two years (730 days), and Elation Professional product rechargeable batteries to be free of manufacturing defects in material and workmanship for a period of six months (180 days), from the original date of purchase. This warranty excludes discharge lamps and all product accessories. This warranty shall be valid only if the product is purchased within the United States of America, including possessions and territories. It is the owner's responsibility to establish the date and place of purchase by acceptable evidence, at the time service is sought.

B. For warranty service, send the product only to the Elation Professional factory. All shipping charges must be pre-paid. If the requested repairs or service (including parts replacement) are within the terms of this warranty, Elation Professional will pay return shipping charges only to a designated point within the United States. If any product is sent, it must be shipped in its original package and packaging material. No accessories should be shipped with the product. If any accessories are shipped with the product, Elation Professional shall have no liability what so ever for loss and/or or damage to any such accessories, nor for the safe return thereof.

C. This warranty is void if the product serial number and/or labels are altered or removed; if the product is modified in any manner which Elation Professional concludes, after inspection, affects the reliability of the product; if the product has been repaired or serviced by anyone other than the Elation Professional factory unless prior written authorization was issued to purchaser by Elation Professional; if the product is damaged because not properly maintained as set forth in the product instructions, guidelines and/or user manual.

D. This is not a service contract, and this warranty does not include any maintenance, cleaning or periodic check-up. During the periods as specified above, Elation Professional will replace defective parts at its expense, and will absorb all expenses for warranty service and repair labor by reason of defects in material or workmanship. The sole responsibility of Elation Professional under this warranty shall be limited to the repair of the product, or replacement thereof, including parts, at the sole discretion of Elation Professional. All products covered by this warranty were manufactured after January 1, 1990, and bare identifying marks to that effect.

E. Elation Professional reserves the right to make changes in design and/or performance improvements upon its products without any obligation to include these changes in any products theretofore manufactured.

F. No warranty, whether expressed or implied, is given or made with respect to any accessory supplied with the products described above. Except to the extent prohibited by applicable law, all implied warranties made by Elation Professional in connection with this product, including warranties of merchantability or fitness, are limited in duration to the warranty periods set forth above. And no warranties, whether expressed or implied, including warranties of merchantability or fitness, shall apply to this product after said periods have expired. The consumer's and/or dealer's sole remedy shall be such repair or replacement as is expressly provided above; and under no circumstances shall Elation Professional be liable for any loss and/or damage, direct and/or consequential, arising out of the use of, and/or the inability to use, this product.

G. This warranty is the only written warranty applicable to Elation Professional products and supersedes all prior warranties and written descriptions of warranty terms and conditions heretofore published.

WARRANTY RETURNS

All returned service items whether under warranty or not, must be freight pre-paid and accompany a return authorization (R.A.) number. The R.A. number must be clearly written on the outside of the return package. A brief description of the problem as well as the R.A. number must also be written down on a piece of paper and included in the shipping container. If the unit is under warranty, you must provide a copy of your proof of purchase invoice. Items returned without a R.A. number clearly marked on the outside of the package will be refused and returned at customer's expense. You may obtain a R.A. number by contacting customer support.

SAFETY GUIDELINES

This device is a sophisticated piece of electronic equipment. To guarantee a smooth operation, it is important to follow all instructions and guidelines in this manual. ELATION PROFESSIONAL is not responsible for injury and/or damages resulting from the misuse of this device due to the disregard of the information printed in this manual. Only the original included parts and/or accessories for this device should be used. Any modifications to the device, included and/or accessories will void the original manufacturer's warranty and increase the risk of damage and/or personal injury.



PROTECTION CLASS 1 - IP TESTER MUST BE PROPERLY GROUNDED

THIS DEVICE MUST ONLY BE USED BY AN AUTHORIZED ELATION TRAINED SERVICE TECHNICIAN. DO NOT ATTEMPT TO USE THIS DEVICE WITHOUT BEING FULLY TRAINED ON HOW TO USE IT. ANY DAMAGES OR REPAIRS TO THIS DEVICE OR ANY ELATION AND/OR NON-ELATION LIGHTING FIXTURES CONNECTED TO THIS DEVICE RESULTING FROM IMPROPER USE, INCORRECT PRESSURE/VACUUM SETTINGS, AND/OR THE DISREGARD OF THE SAFETY AND OPERATION GUIDELINES IN THIS USER MANUAL VOIDS THE ELATION WARRANTY AND ARE NOT SUBJECT TO ANY WARRANTY CLAIMS AND/OR REPAIRS, AND MAY ALSO VOID THE WARRANTY FOR ANY NON-ELATION LIGHTING FIXTURES. DO NOT PLUG IP TESTER INTO A DIMMER PACK! KEEP FLAMMABLE MATERIALS AWAY FROM IP TESTER.



DRY LOCATIONS USE ONLY!

DO NOT EXPOSE IP TESTER TO RAIN, MOISTURE, AND/OR SEVERE ENVIRONMENTS! DO NOT SPILL WATER AND/OR LIQUIDS ON OR INTO THE IP TESTER!



IP FIXTURE MUST BE POWERED OFF AND PROPERLY COOLED BEFORE TESTING. PLEASE REFER TO THE IP FIXTURE USER MANUAL FOR PROPER COOLING TIMES.



ENSURE NO DUST, WATER, OR DEBRIS ENTERS THE IP FIXTURE WHEN REMOVING THE AIR RELIEF VALVES! CAREFULLY INSPECT THE AREA AROUND THE AIR RELIEF VALVE OPENINGS BEFORE REPLACING THE AIR RELIEF VALVE AFTER TESTING IS COMPLETE.

DO NOT connect an external compressor to the device.

AVOID brute force handling when transporting or operating.

DO NOT expose any part of the device to open flame or smoke. Keep device away from heat sources such as radiators, heat registers, stoves, or other appliances (including amplifiers) that produce heat.

DO NOT use device in extreme and/or severe environments.

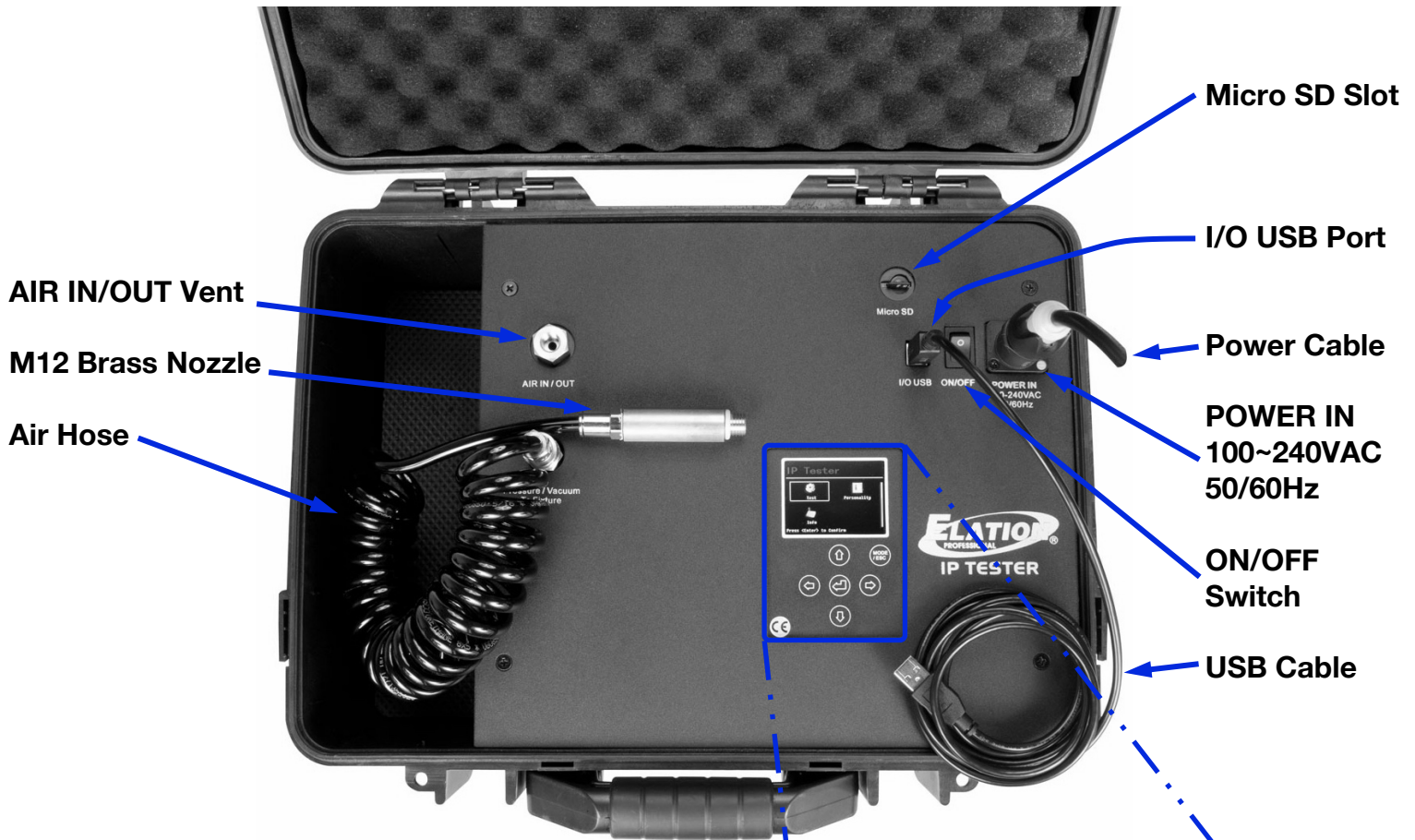
DO NOT operate device if power cord is frayed, crimped, damaged and/or if any of the power cord connectors are damaged and do not insert into the device securely with ease. **NEVER** force a power cord connector into device. If the power cord or any of its connectors are damaged, replace it immediately with a new one of similar power rating.

CAUTION: Device should be operated by qualified and trained professionals ONLY.

Read user manual carefully to ensure normal operation and lifespan of the device.

ONLY use the original packaging materials and/or case to transport the IP Tester in for service.

OVERVIEW



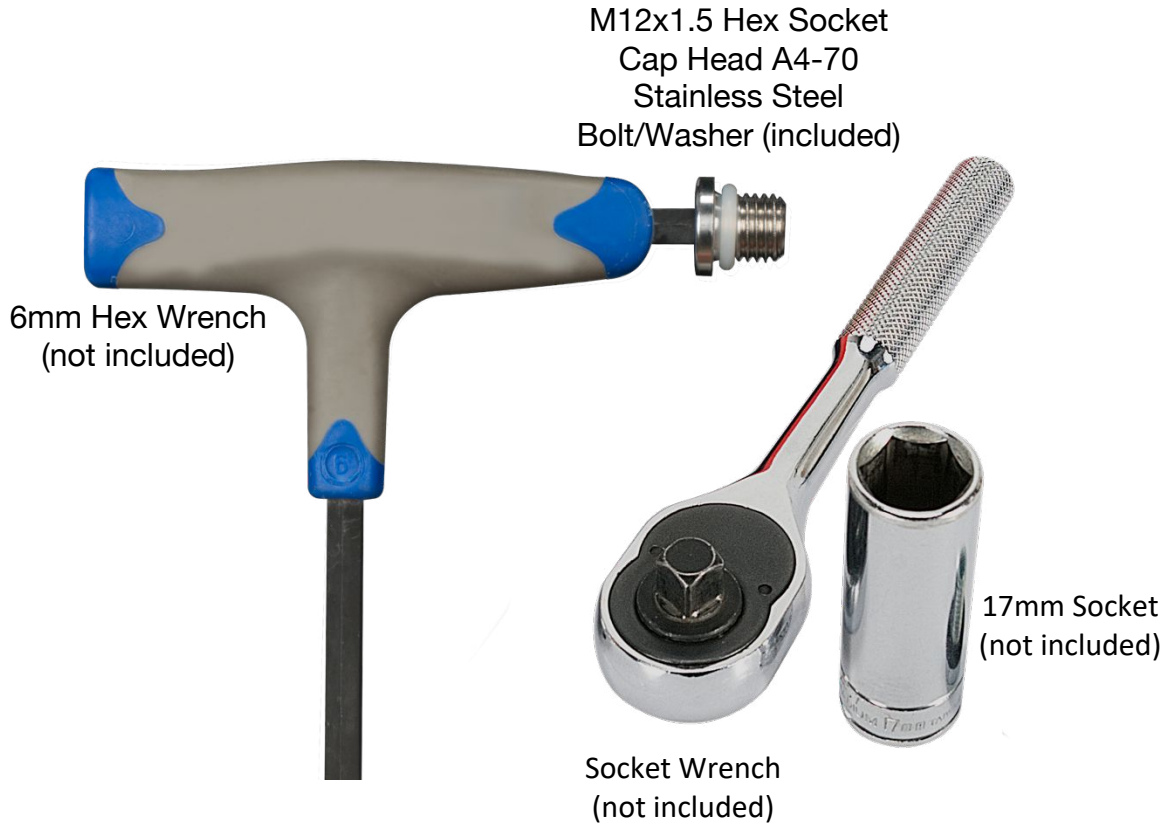
INCLUDED ACCESSORIES

- (1) 3-5 ft Coiled Air Hose/Quick-Connect Fitting
- (1) M12 Treaded Brass Nozzle/Push-to-Connect Fitting
- (2) M12 x 1.5 Orange Colored Nylon Bolt
- (1) 5 ft Power Cable
- (1) 6 ft USB Cable
- (1) 4GM (min) Micro SD Card

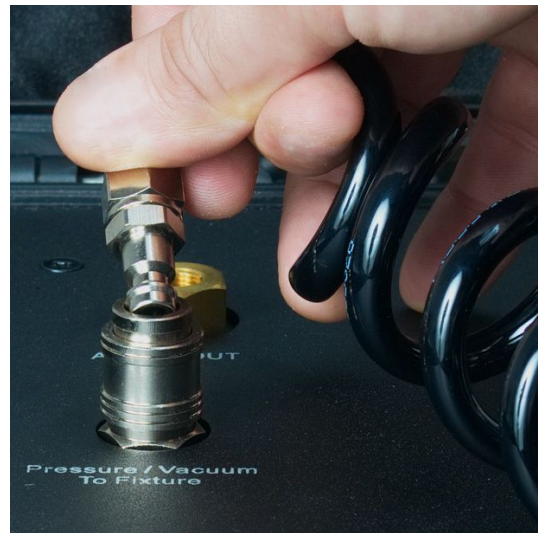


RECOMMENDED TOOLS

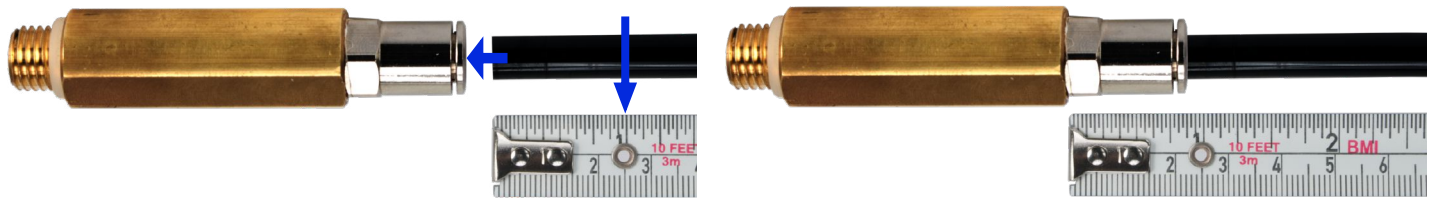
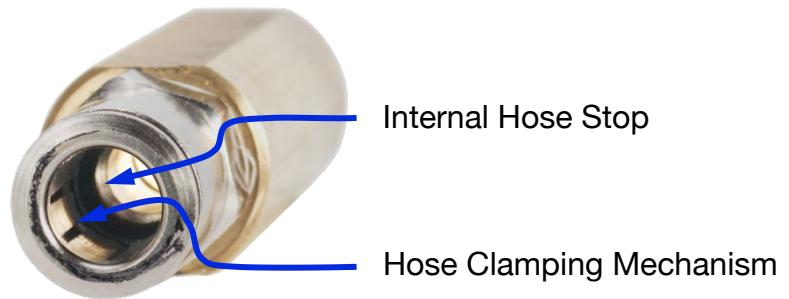
Tools pictured below are required to remove and/or replace the pressure relief valves used on most IP fixtures. These are not included with the IP TESTER but can be purchased at any local hardware store.



CONNECTIONS

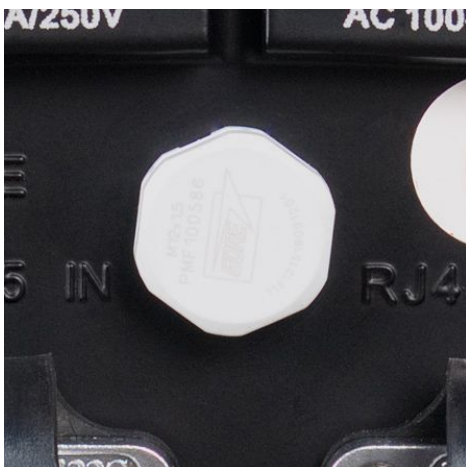


1. Connect the air hose quick-connect fitting to the IP TESTER.



2. Connect the air hose to the brass nozzle by fully inserting the bare end into the push-to-connect fitting, then tug gently to engage the internal clamping mechanism.

NOTE: Air hose must be inserted approximately 1-inch (2.5cm) for a proper connection.



3. Remove main pressure relief valve from the fixture using a 17mm socket and socket wrench.



4. If the fixture has a second pressure relief valve, remove and replace it with an M12x1.5 Hex Socket Cap Head A4-70 Stainless Steel Bolt/Washer (included), tighten using a 6mm Hex Wrench.
NOTE: Make sure the bolt has its O-ring for a proper seal.



4. Carefully insert the threaded end of brass nozzle into the fixture air relief valve hole and twist it until it is finger tight and slightly compresses the rubber O-ring seal.
NOTE: Make sure the brass nozzle has an O-ring for a proper seal.

It may be easier to FIRST insert and tighten the brass nozzle into the fixture relief valve hole, and then insert the bare end of the air hose into the push-to-connect fitting.

NOTE: The air hose must be inserted approximately 1-inch (2.5cm) for a proper connection, and tugged on gently to engage the internal clamping mechanism.

5. Connect power cable and switch the IP TESTER ON.

NOTE: If a leak is suspected at the nozzle or nylon bolt, check the following items:

1. Confirm brass nozzle is properly inserted and secure, apply an additional ¼-turn if needed.
2. Confirm air hose is fully inserted approximately 1-inch (2.5cm), remove and reinsert if needed.
3. Confirm the nylon bolt is properly installed and secure, apply an additional ¼-turn if needed.

Retest fixture again to verify the nozzle or nylon bolt leak no longer exists.



WARNING: DO NOT OVER TIGHTEN BRASS NOZZLE OR NYLON BOLT!



IMPORTANT NOTICE!

CONSULT WITH YOUR RESPECTIVE LIGHTING MANUFACTURER BEFORE USING THIS IP TESTER DEVICE ON NON-ELATION BRAND FIXTURES!

IP TESTER DEVICE SETTINGS CONTAINED IN THIS MANUAL DO NOT APPLY TO NON-ELATION BRAND FIXTURES AND MAY DAMAGE YOUR FIXTURE.

PLEASE CONTACT ELATION SERVICE FOR FURTHER DETAILS.

TESTING FUNCTIONS

Test

Connect the air hose to the tester and the fixture, power **ON** the tester and select the desired mode/function. Use **Personality** mode to set fixture used in **Test** mode (see **Personality** mode)
Note: The IP Tester can work independently of a PC, and automatically saves test results in PSI or KPA format on the Micro SD card, which can then be opened and viewed using the IPTester PC software.



1. Select **Test** and <Enter> ↓



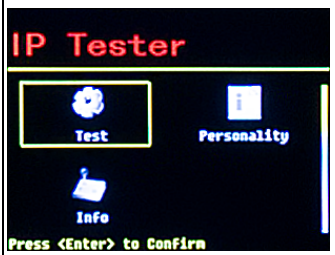




2. Click <Enter> ↓ to input serial number (Choose 'fixture' in **Personality**)



3. To **input SN#**, use ← → and ↑ ↓ to enter numbers. If you want to bypass this process, merely click <Enter> ↓ again and the test will run automatically



4. The test results are automatically stored on **SD Card**

| | | | | |
|--|---|--|--|---|
|  <p>(Use ↑ ↓ to select, then ↓ to enter selection)</p>  <p>Press <Enter> to Confirm</p> | <p>Auto</p>  | <p>fixture model: Fixture A <start test></p> <p>(Choose 'fixture' in 'Personality')</p> | <p>input SN# 000000000 (Use ← → and ↑ ↓ to enter numbers)</p> <p>< back > Note that in "auto mode," the test always performs a "pressure" test, and when this passes, it automatically performs a "vacuum" test.</p> | <p>target value: ##.### psi min. value: ##.###psi Hold time: ## sec TEST: ##sec</p> |
| <p>Manual Test</p>  | <p>Vacuum</p> <p>target value: -##.# psi min. value: -##.# psi time hold:### s < OFF > < ON > Test pass</p> <p>Pressure</p> <p>target value: ##.# psi min. value: ##.# psi time hold:005 s < OFF > < ON > Test pass</p> | | | |
| <p>Self-Test</p> |  <p>SELF-TEST MODE FOR FACTORY CALIBRATION ONLY! DO NOT CONNECT ANY LIGHTING FIXTURE TO THE DEVICE USING SELF-TEST MODE!</p> | | | |

Personality

Select the desired fixture to be tested.



1. Select **Personality** and press <Enter>↵



2. Select Fixture or Device, use ← → arrows to toggle through available fixtures



3. With fixture selected, press <Enter>↵, and press <Enter>↵, again when you see the fixture numbers to load the fixture in the “auto” test. If you don’t do this, then the fixture won’t load.

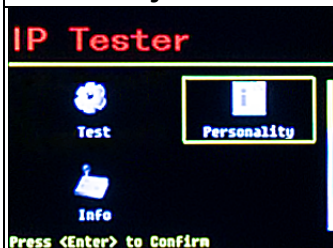


4. Press **MODE/ESC** to return to main mode menu. Note that to “set” a fixture, you need to enter this page again to get it into the “auto” or “manual” test mode.

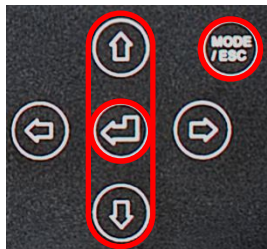
The fixtures listed in the right column are sample choices; the number of fixtures available for testing is not limited to those listed on this chart.

Additional fixtures can be created and loaded to the IP Tester using the PC software.


If a fixture uploaded from the PC software doesn’t show on the fixture list, select **Service Setting**, then **Fixture**, which uploads the fixture directly to the IP Tester, and allows the fixture to be selected using the **Fixture** in the **Personality** Mode.





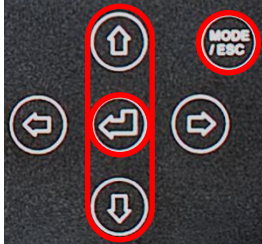

(Use ↑↓ to select, then ↵ to enter selection)



Press <Enter> to Confirm

| Fixture | | |
|---|----------------|--|
|  | <Proteus Beam> | Pressure target value: 7.980 psi Hold time: 10 sec Pressure min. value: 6.530 psi Vacuum target value: -7.980 psi Hold time: 10 sec Vacuum min. value: -6.530 psi |
| | Fixture A | Pressure target value: ##.### psi Hold time: ## sec Pressure min. value: ##.### psi Vacuum target value: -##.### psi Hold time: ## sec Vacuum min. value: -##.### psi |
| | Fixture B | Pressure target value: ##.### psi Hold time: ## sec Pressure min. value: ##.### psi Vacuum target value: -##.### psi Hold time: ## sec Vacuum min. value: -##.### psi |
| | Fixture C | Pressure target value: ##.### psi Hold time: ## sec Pressure min. value: ##.### psi Vacuum target value: -##.### psi Hold time: ## sec Vacuum min. value: -##.### psi |
| | Proteus Hybrid | Pressure target value: 7.980 psi Hold time: 10 sec Pressure min. value: 6.530 psi Vacuum target value: -7.980 psi Hold time: 10 sec Vacuum min. value: -6.530 psi |

Personality (continued)

| | | | | | | | | | | | | | |
|--|---|--|--|--------------|--|-----------|--|-----------|--|-----------|--|----------------|--|
|  <p>IP Tester</p> <p>Test Personality</p> <p>Info</p> <p>Press <Enter> to Confirm</p> | <p>Unit</p>  | <p>kPa</p> <hr/> <p>psi</p> | | | | | | | | | | | |
| <p>(Use ↑↓ to select, then ↵ to enter selection)</p>  <p>Press <Enter> to Confirm</p> | <p>Service Setting</p>  <p>Note, that once you're in Service Setting, after entering the password, you can manually change all the settings from each fixture in "set Fixture." Also, in Service Setting, after entering the password, you have access to the "reset default" menu; which when activated, erases all fixtures except Fixture A, B, and C. You have to upload them again from the PC.</p> | <p>Password</p> <p>< 000 > Range: 000 – 255 (Default password: 050)</p> <p>Fixture</p> | <table border="1"> <tr> <td data-bbox="906 451 1104 630">Proteus Beam</td> <td data-bbox="1104 451 1559 630"> Pressure target value: 7.980 psi Hold time: 10 sec Pressure min. value: 6.530 psi Vacuum target value: -7.980 psi Hold time: 10 sec Vacuum min. value: -6.530 psi </td> </tr> <tr> <td data-bbox="906 630 1104 787">Fixture A</td> <td data-bbox="1104 630 1559 787"> Pressure target value: ##.### psi Hold time: ## sec Pressure min. value: ##.### psi Vacuum target value: -##.### psi Hold time: ## sec Vacuum min. value: -##.### psi </td> </tr> <tr> <td data-bbox="906 787 1104 945">Fixture B</td> <td data-bbox="1104 787 1559 945"> Pressure target value: ##.### psi Hold time: ## sec Pressure min. value: ##.### psi Vacuum target value: -##.### psi Hold time: ## sec Vacuum min. value: -##.### psi </td> </tr> <tr> <td data-bbox="906 945 1104 1123">Fixture C</td> <td data-bbox="1104 945 1559 1123"> Pressure target value: ##.### psi Hold time: ## sec Pressure min. value: ##.### psi Vacuum target value: -##.### psi Hold time: ## sec Vacuum min. value: -##.### psi </td> </tr> <tr> <td data-bbox="906 1123 1104 1291">Proteus Hybrid</td> <td data-bbox="1104 1123 1559 1291"> Pressure target value: 7.980 psi Hold time: 10 sec Pressure min. value: 6.530 psi Vacuum target value: -7.980 psi Hold time: 10 sec Vacuum min. value: -6.530 psi </td> </tr> </table> | Proteus Beam | Pressure target value: 7.980 psi Hold time: 10 sec Pressure min. value: 6.530 psi Vacuum target value: -7.980 psi Hold time: 10 sec Vacuum min. value: -6.530 psi | Fixture A | Pressure target value: ##.### psi Hold time: ## sec Pressure min. value: ##.### psi Vacuum target value: -##.### psi Hold time: ## sec Vacuum min. value: -##.### psi | Fixture B | Pressure target value: ##.### psi Hold time: ## sec Pressure min. value: ##.### psi Vacuum target value: -##.### psi Hold time: ## sec Vacuum min. value: -##.### psi | Fixture C | Pressure target value: ##.### psi Hold time: ## sec Pressure min. value: ##.### psi Vacuum target value: -##.### psi Hold time: ## sec Vacuum min. value: -##.### psi | Proteus Hybrid | Pressure target value: 7.980 psi Hold time: 10 sec Pressure min. value: 6.530 psi Vacuum target value: -7.980 psi Hold time: 10 sec Vacuum min. value: -6.530 psi |
| Proteus Beam | Pressure target value: 7.980 psi Hold time: 10 sec Pressure min. value: 6.530 psi Vacuum target value: -7.980 psi Hold time: 10 sec Vacuum min. value: -6.530 psi | | | | | | | | | | | | |
| Fixture A | Pressure target value: ##.### psi Hold time: ## sec Pressure min. value: ##.### psi Vacuum target value: -##.### psi Hold time: ## sec Vacuum min. value: -##.### psi | | | | | | | | | | | | |
| Fixture B | Pressure target value: ##.### psi Hold time: ## sec Pressure min. value: ##.### psi Vacuum target value: -##.### psi Hold time: ## sec Vacuum min. value: -##.### psi | | | | | | | | | | | | |
| Fixture C | Pressure target value: ##.### psi Hold time: ## sec Pressure min. value: ##.### psi Vacuum target value: -##.### psi Hold time: ## sec Vacuum min. value: -##.### psi | | | | | | | | | | | | |
| Proteus Hybrid | Pressure target value: 7.980 psi Hold time: 10 sec Pressure min. value: 6.530 psi Vacuum target value: -7.980 psi Hold time: 10 sec Vacuum min. value: -6.530 psi | | | | | | | | | | | | |

Info

View the current software version.



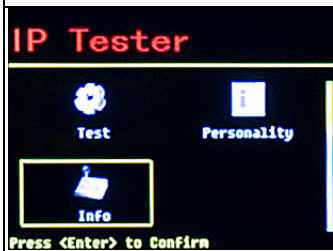
1. Select **Info** and press <Enter> ↵



2. Press <Enter> ↵



3. Press **MODE/ESC** to return to main mode menu



(Use ↑↓ to select, then ↵ to enter selection)



Press <Enter> to Confirm

Auto



Ver: 1. 0. 2

TESTING EXAMPLE: ELATION PROTEUS HYBRID™



The following sequence of instructions demonstrates a typical IP fixture test; However, specific testing instructions will vary for each IP fixture.

The **ELATION PROTEUS HYBRID**, which is used for this testing example, has a secondary pressure relief valve. For testing, this valve needs to be removed temporarily, and replaced with an included air/water-tight M12x1.5 Hex Socket Cap Head A4-70 Stainless Steel Bolt/Washer.

Always review the IP fixture user manual for specific instructions on accessing the pressure relief valves.



1. Remove the M12 hex-head pressure relief valve on the rear connection pane of the fixture.



2. Connect the air hose to the IP TESTER by inserting the quick-connect fitting into the coupler.

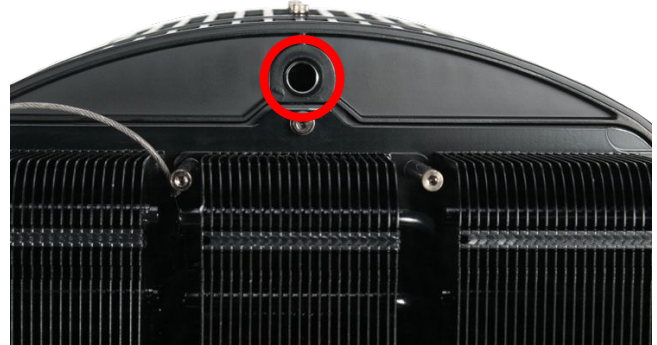
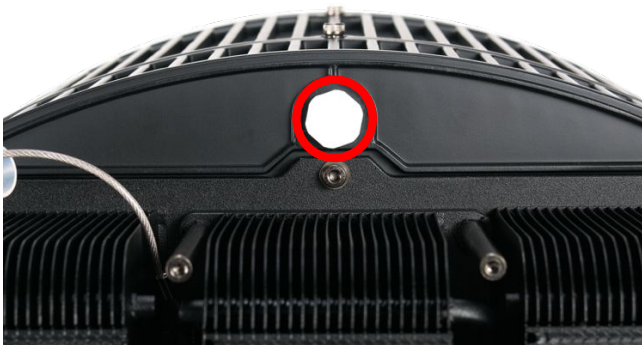


3. Connect the air hose to the brass nozzle by fully inserting the bare end into the push-to-connect fitting, then tug gently to engage the internal clamping mechanism.

NOTE: Air hose must be inserted approximately 1-inch (2.5cm) for a proper connection.



4. Insert the threaded end of Pressure/Vacuum Hose Adapter into the threaded valve through hole socket, and twist it until it is finger tight and slightly compresses the rubber O-ring seal (If the pressure test fails and you suspect a slight leak at the hose adapter, an additional 1/4-turn with a wrench may be necessary to ensure a complete seal, then re-run the pressure test to verify).



5. Remove the back-panel on the fixture moving head and remove the 12M pressure relief valve.



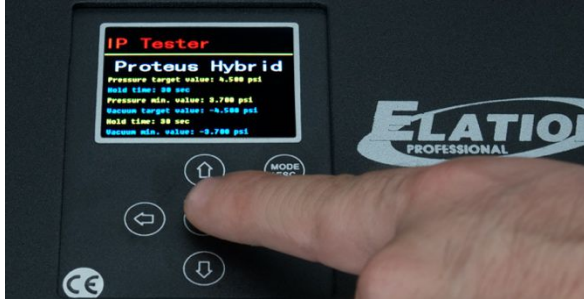
6. Install an M12x1.5 Hex Socket Cap Head A4-70 Stainless Steel Bolt/Washer (included), and tighten using a 6mm Hex Wrench. **NOTE:** Make sure the bolt has its O-ring for a proper seal.



7. Select **Personality** (use ←→↑↓ arrows to toggle through modes) and press <Enter> ↵.



8. Select **Fixture** (use ←, → arrows to toggle through available fixtures) and press <Enter> ↵.



9. Fixture and test parameters are displayed, press <Enter> ↵ again to load the fixture.



10. Press **Mode/Esc** to return to Mode menu.



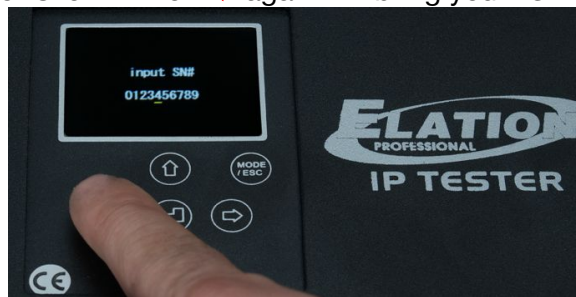
11. Select **Test** and press <Enter> ↵.



12. Select **Auto** and press <Enter> ↵.



13. Click <Enter> ↵ again will bring you first to **input serial SN#** (Choose 'fixture' in **Personality**).



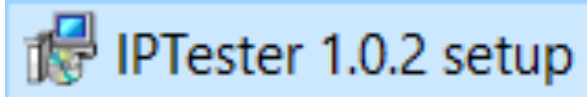
14. To enter the serial number, use ↑↓ arrows to change numbers, and use ←→ arrows to move cursor, then press <Enter> ↵ to begin the test. To bypass the **input SN#** altogether, just push <Enter> ↵ again.



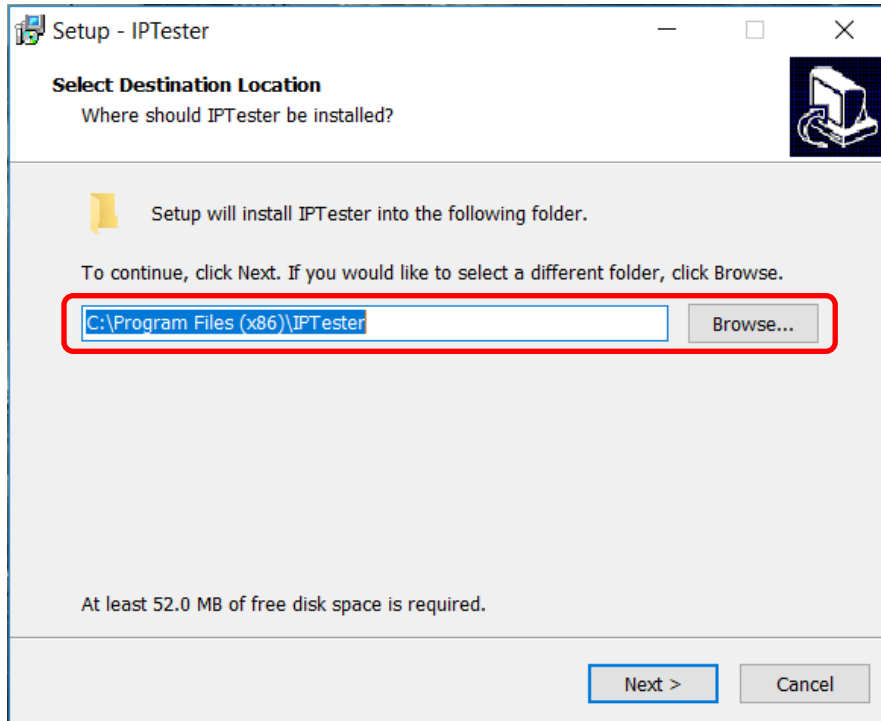
PC SOFTWARE – INSTALLATION

Compatible with Windows 7, 8, 8.1, and 10 and requires a minimum of **52MB** free disk space.

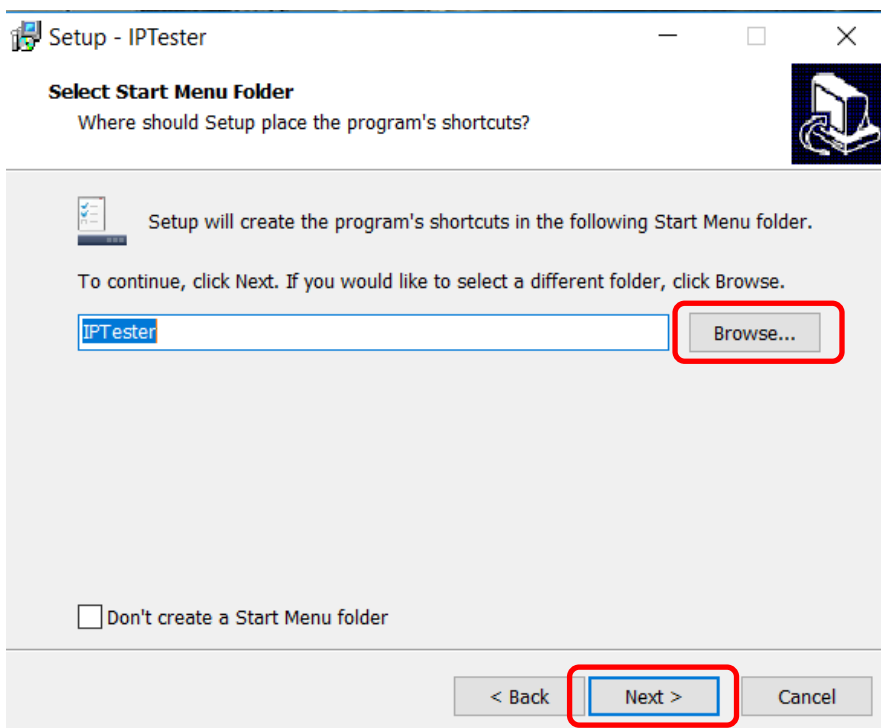
Download and install



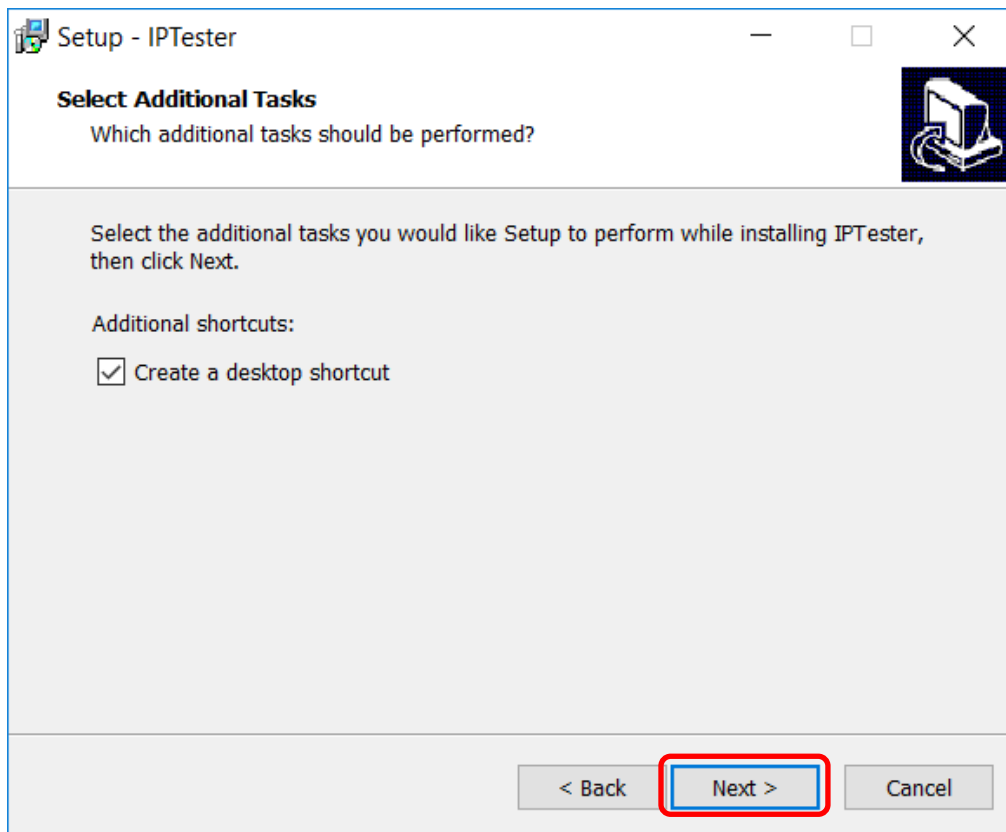
Step 1: Select Destination Location (requires at least **52MB** of free disk space).



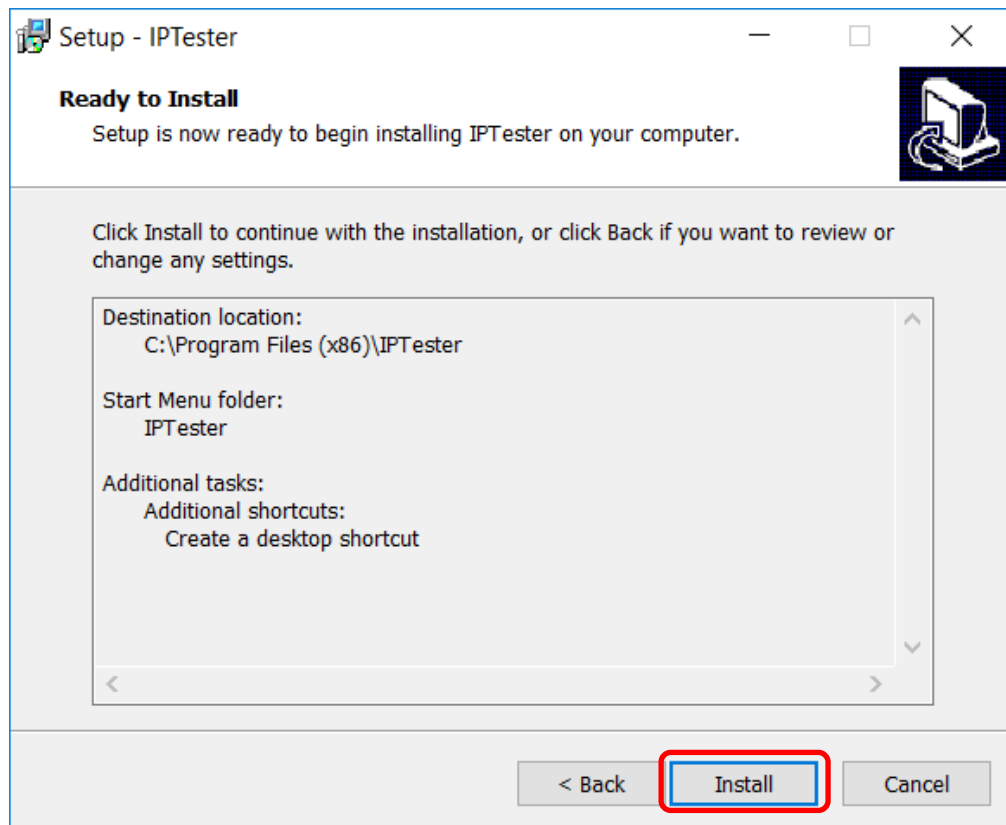
Step 2: Select Start Menu Folder, to select different folder location, click '**Browse...**', and then click '**Next >**' to continue.



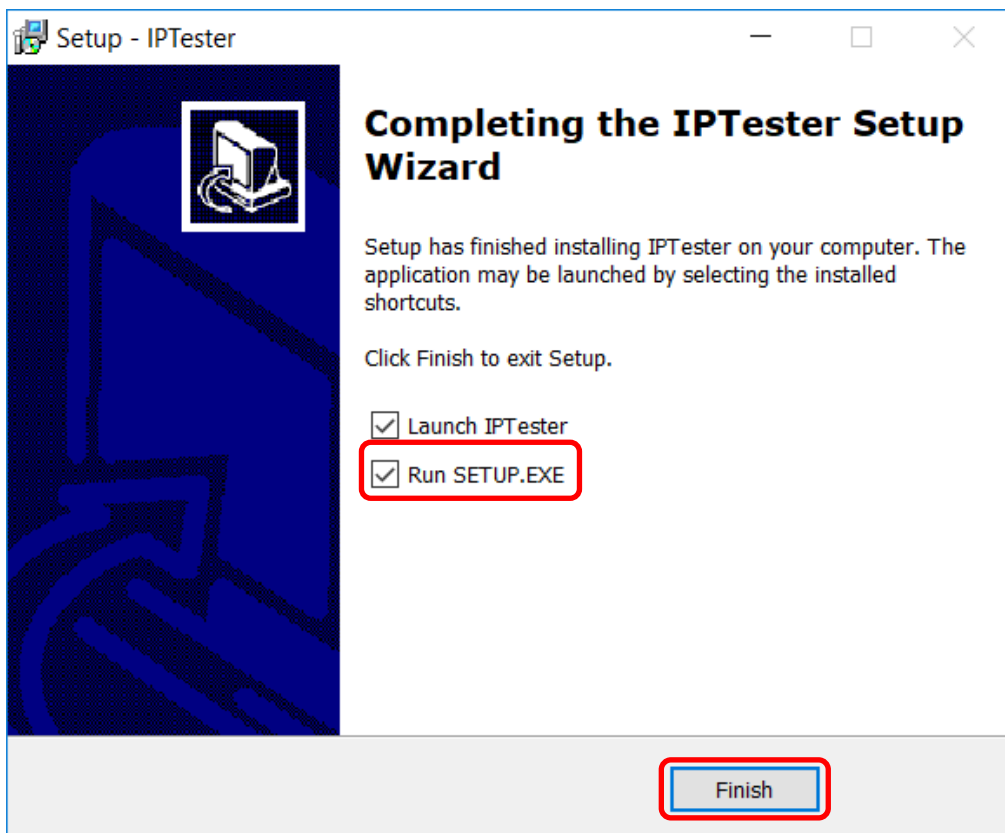
Step 3: Select Additional Tasks, select 'Create a desktop shortcut' and click 'Next >'.



Step 4: 'Ready to install', click 'Install'



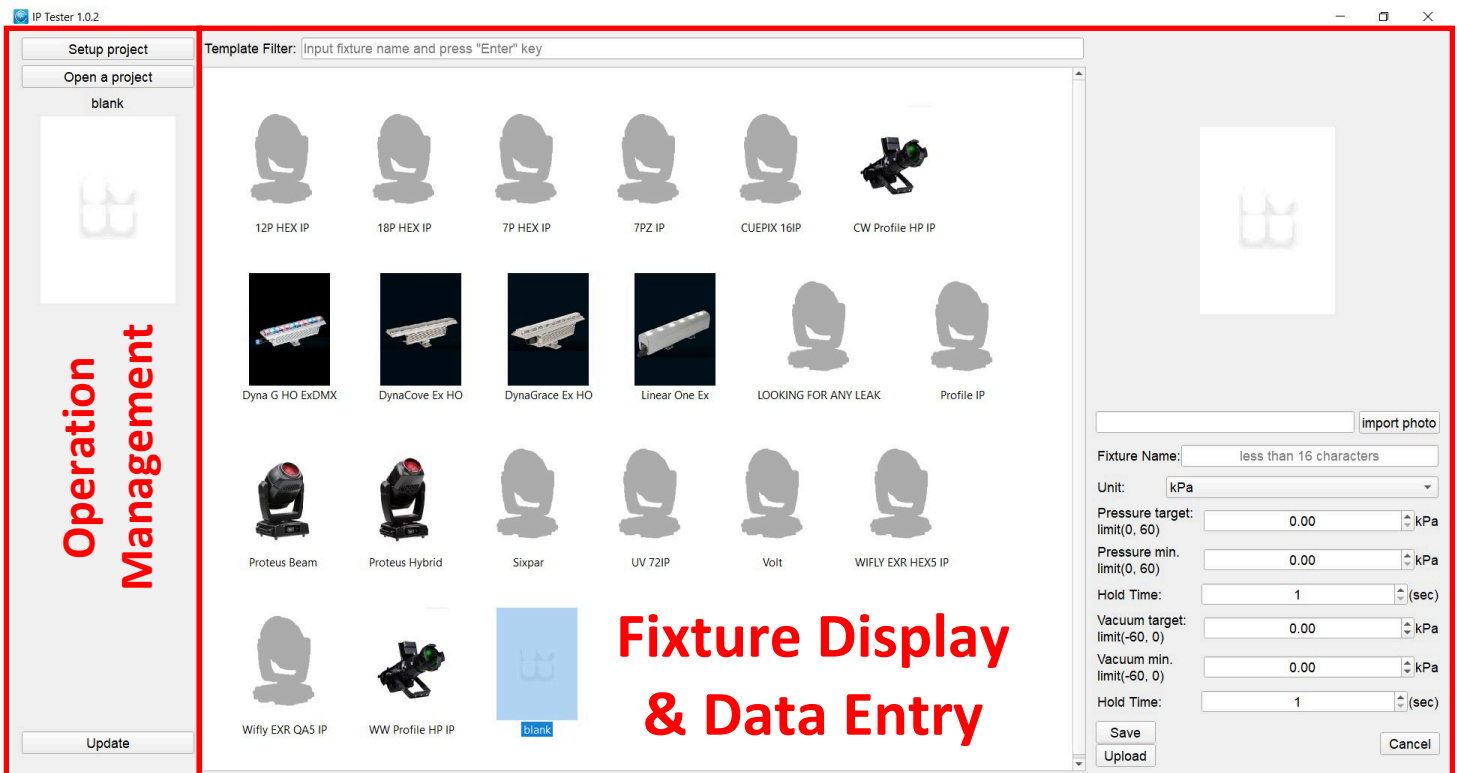
Step 5: As the program finishes installing, a dialogue window will prompt you to launch the program. Select **Run SETUP.EXE**, and select **Launch IPTester** if desired, and click **Finish**.



Click desktop shortcut to launch IPTester software.

PC SOFTWARE - OPERATION

Main Software Interface



Step 1:

Click the 'blank' area to upload a new fixture and enter new data.

- **import photo:** Upload fixture photo in png. or jpg. format
- **Fixture name:** Enter fixture name
- **Unit:** Choose between kPa and psi.
- **Pressure target:** Enter maximum pressure value.
- **Pressure min.:** Enter minimum pressure value.
- **Hold Time:** Enter number of seconds for Pressure test.
- **Vacuum target:** Enter maximum vacuum value.
- **Vacuum min.:** Enter minimum vacuum value.
- **Hold Time:** Enter number of seconds for Vacuum test.

x86/IPTester/templates/Proteus Beam.png import photo

Fixture Name:

Unit:

Pressure target: psi
limit(0, 8.7)

Pressure min. psi
limit(0, 8.7)

Hold Time: (sec)

Vacuum target: psi
limit(-8.7, 0)

Vacuum min. psi
limit(-8.7, 0)

Hold Time: (sec)

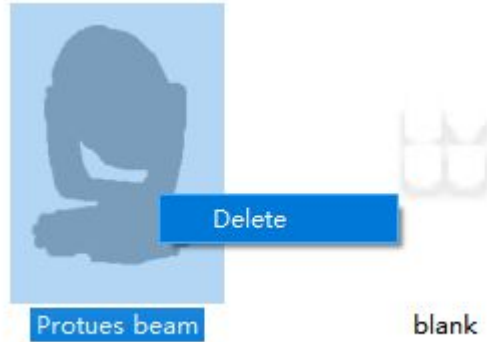
Save
Upload

Cancel

Save: Saves entered data and lists the fixture.

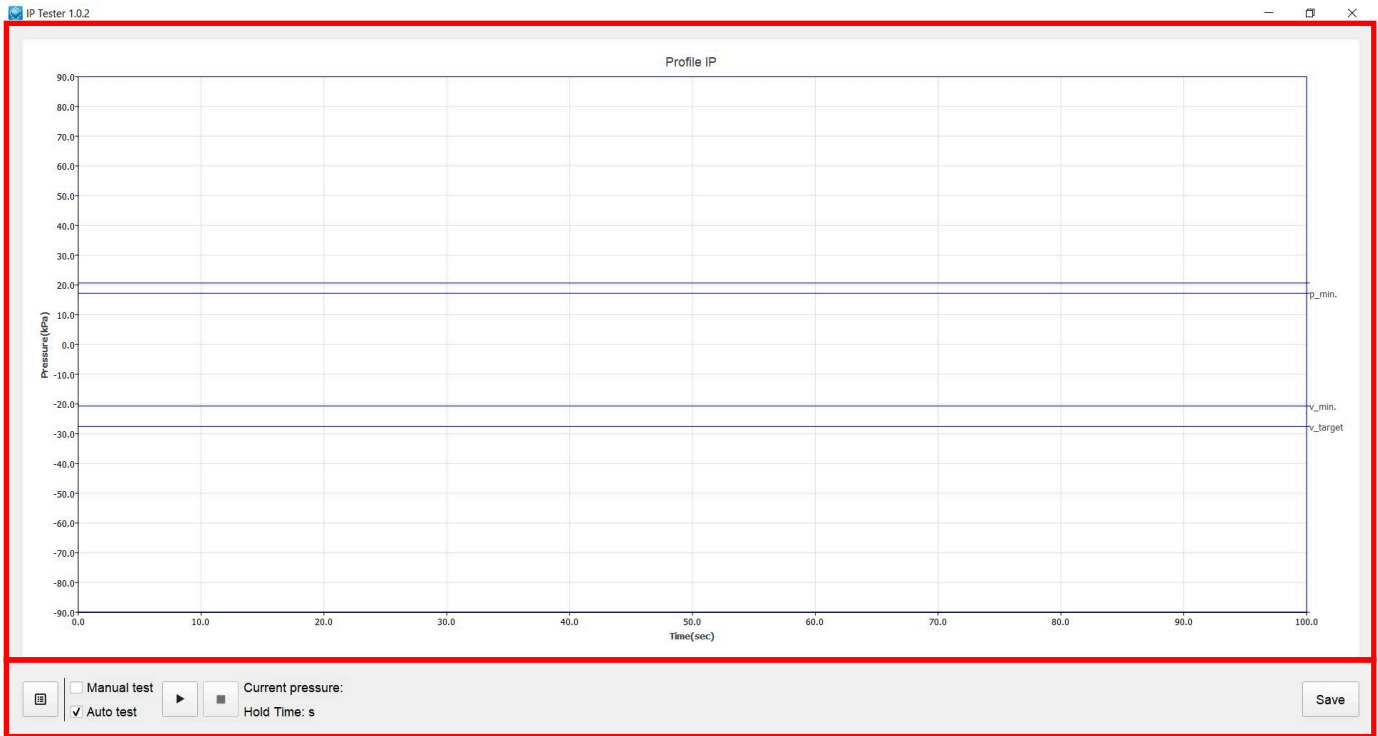
Upload: Upload the data to IP Tester.
CONFIG OK displays if upload is successfully.
Ensure IP Tester is connected to PC successfully before clicking Upload.

Delete:
Right click to delete the fixture data you want.



Step 2:

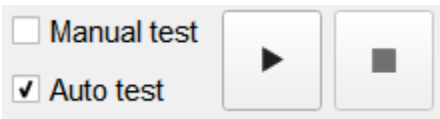
Select fixture you need to test. Then click Setup Project. The following image will be displayed.



Click here to return to main interface.



Manual test: Click (+) for Pressure Test, and (-) for Vacuum Test.



Auto test: performs Pressure test first, then Vacuum test.

Current pressure:

Current pressure: shows current fixture pressure.

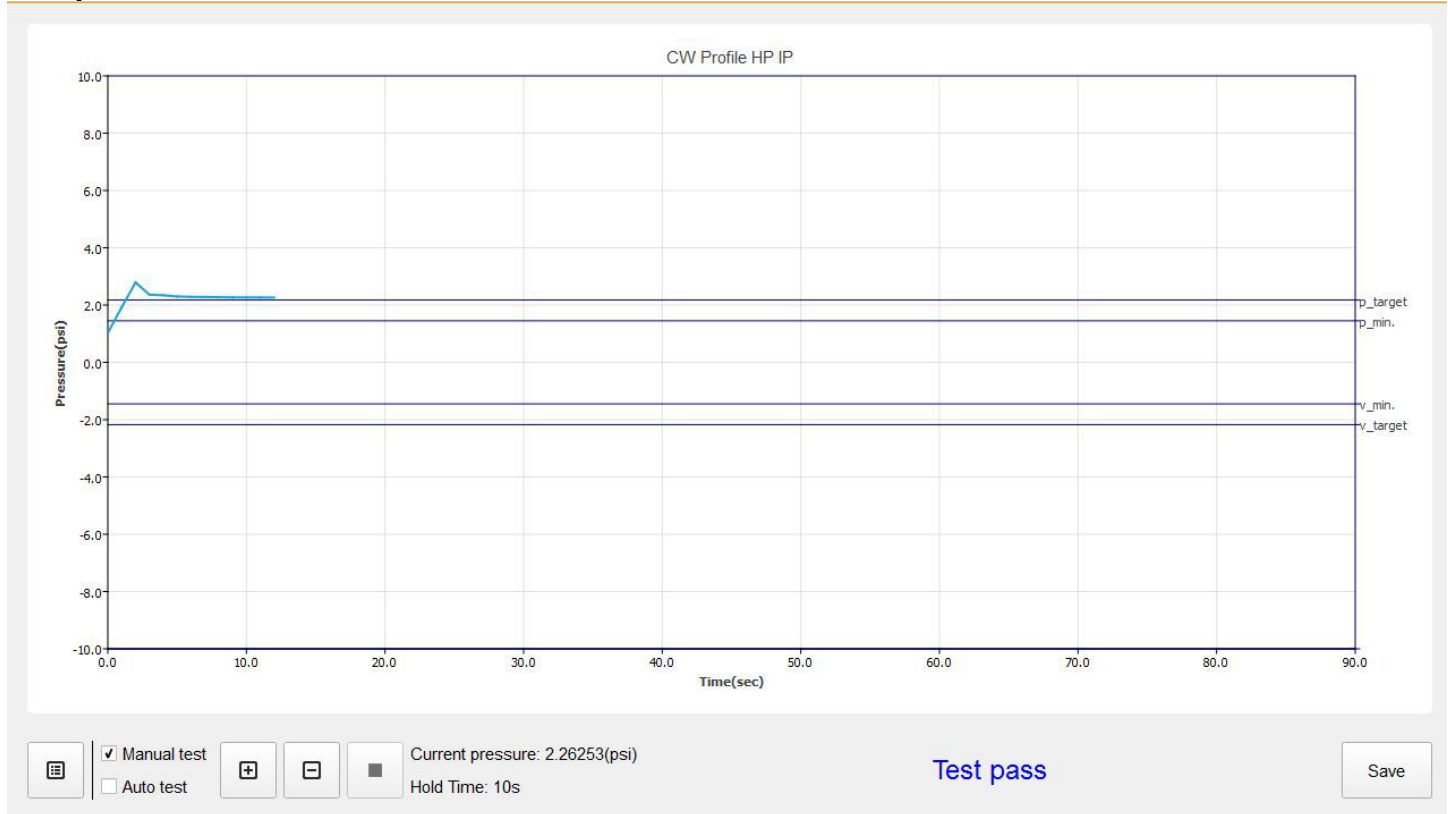
Hold Time:

Hold time: shows hold time for either Pressure test or Vacuum test.

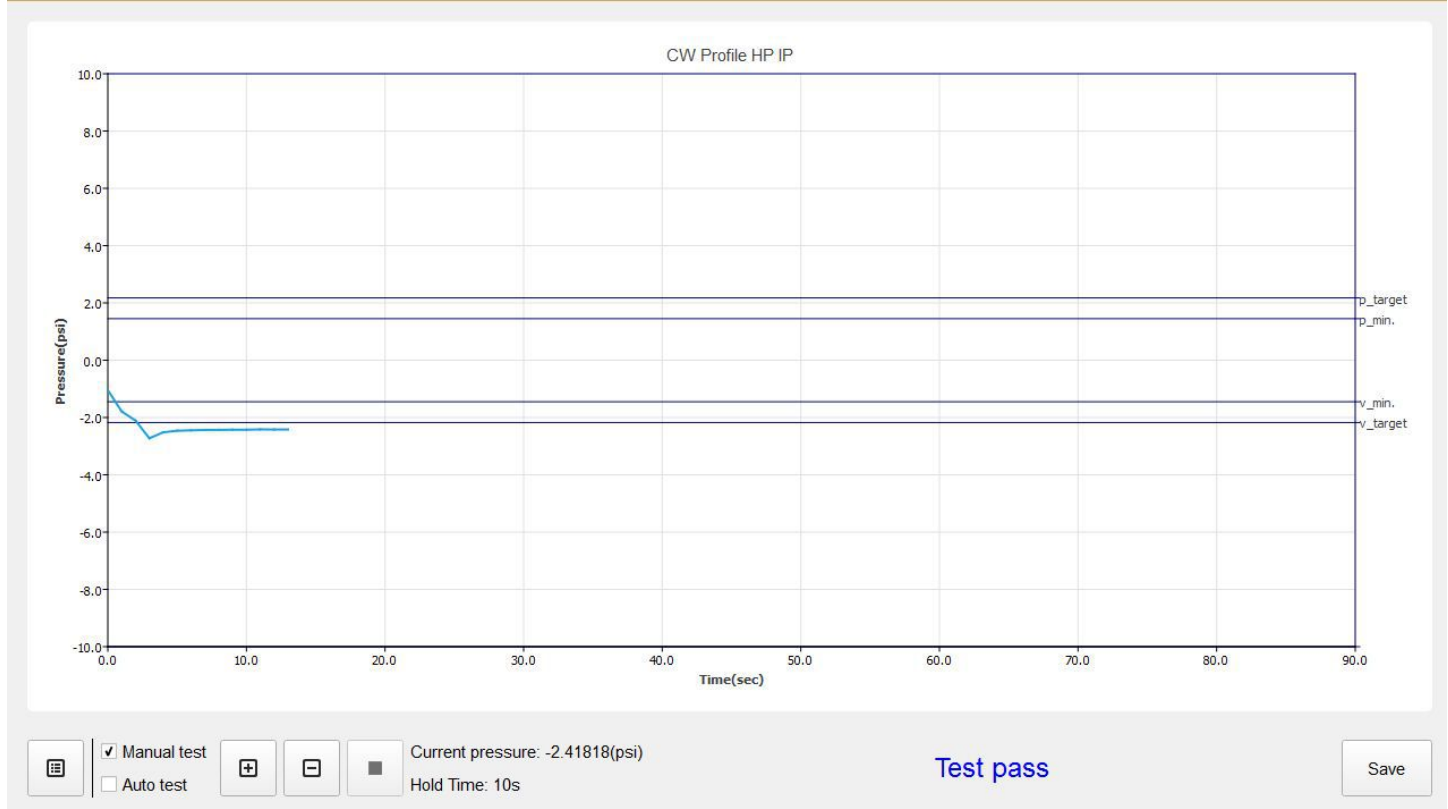
Step 3:

The following 5 test displays are samples of tests run in both **Manual Test** and **Auto Test** modes:

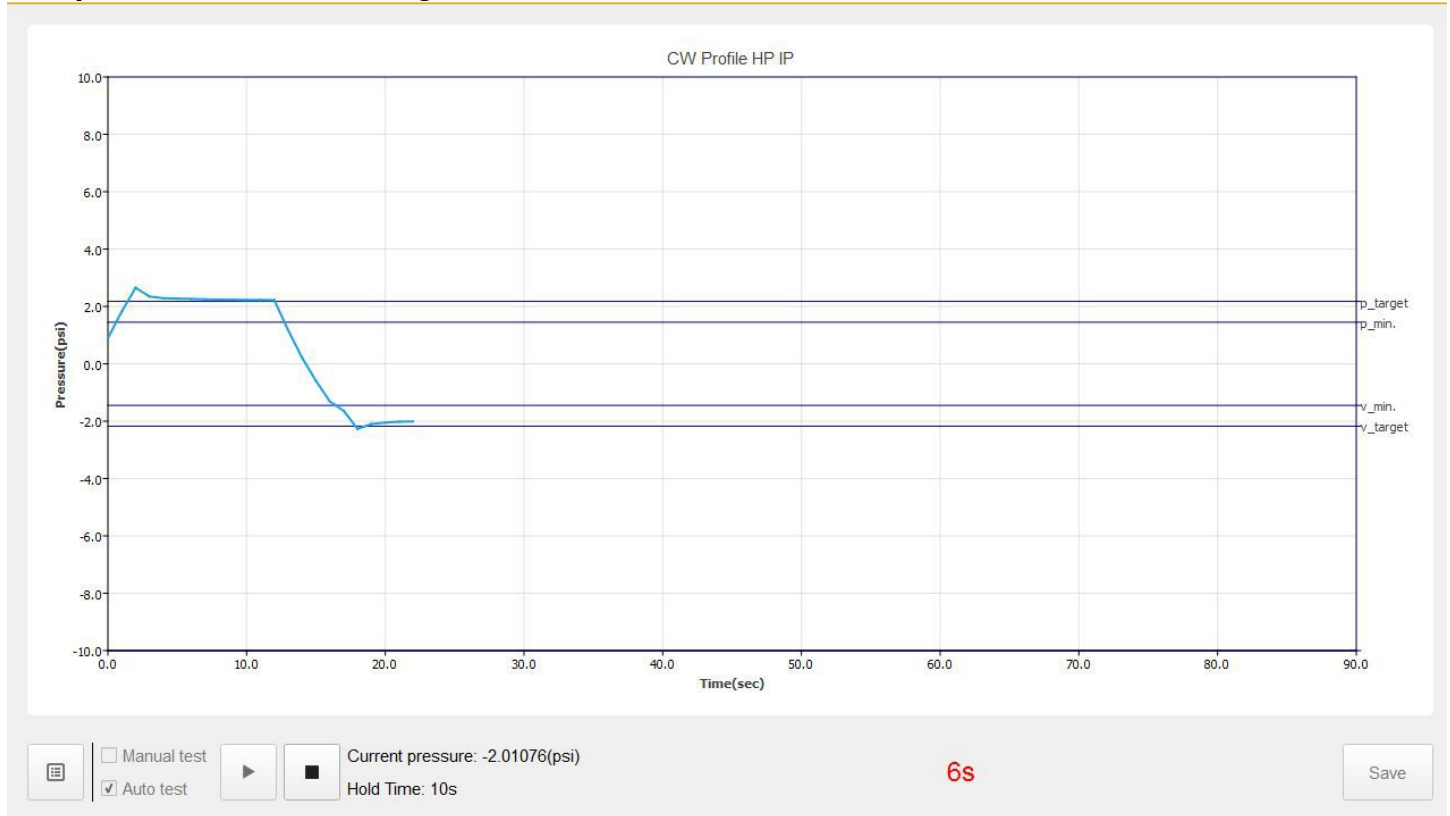
Sample Manual Test for Pressure - Pass



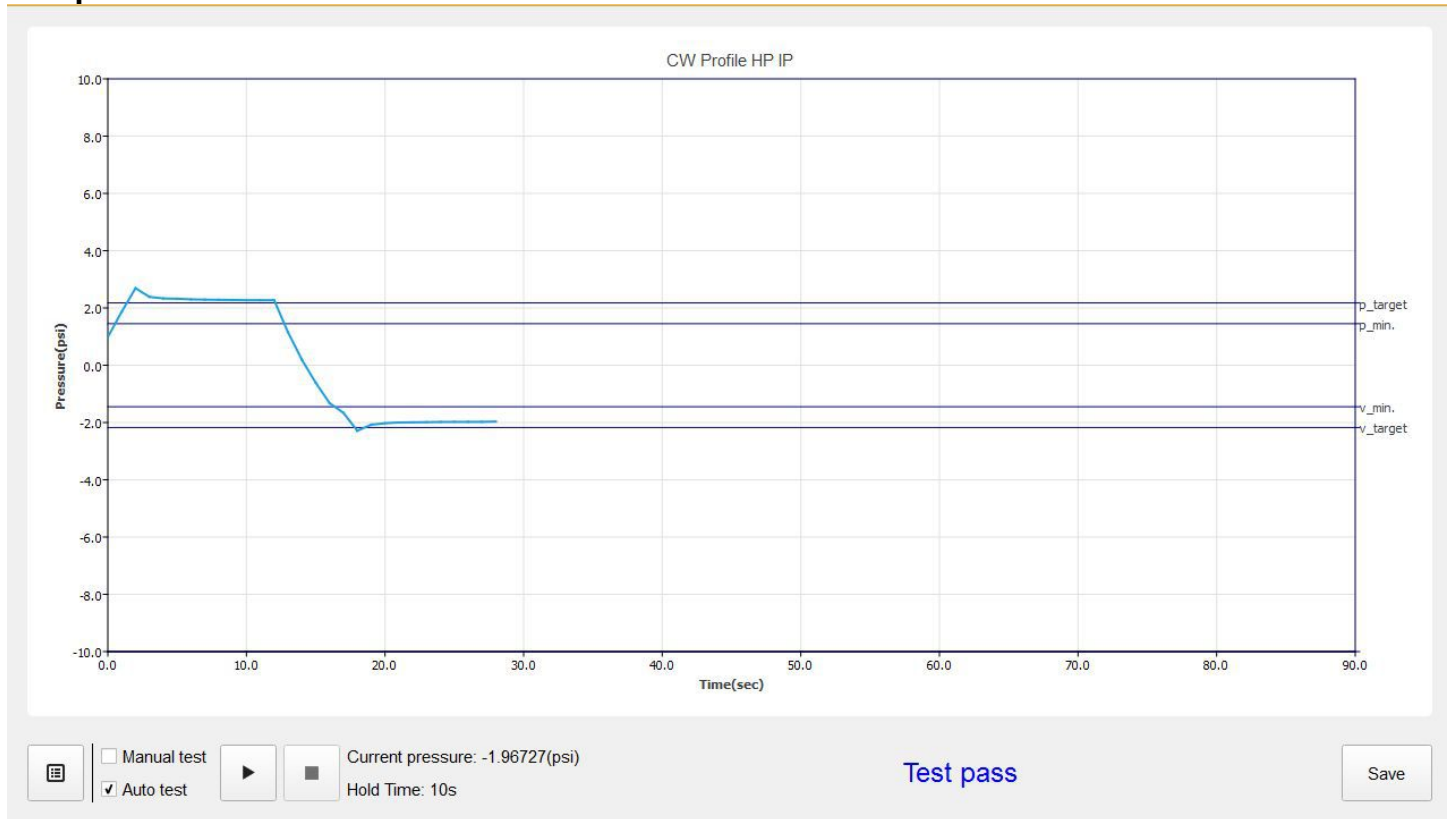
Sample Manual Test for Vacuum - Pass



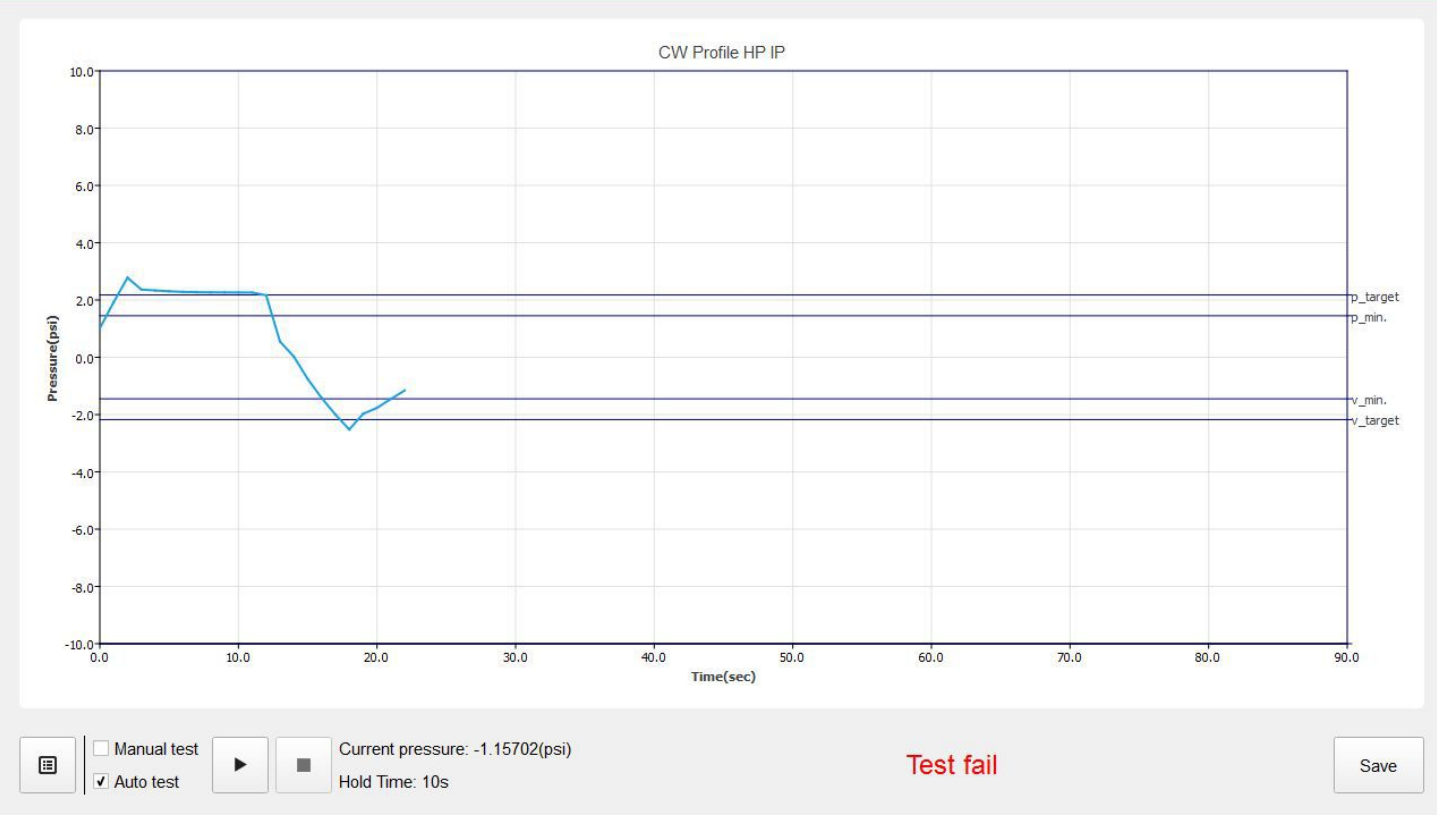
Sample Auto Test - Running



Sample Auto Test - Pass



Sample Auto Test - Fail

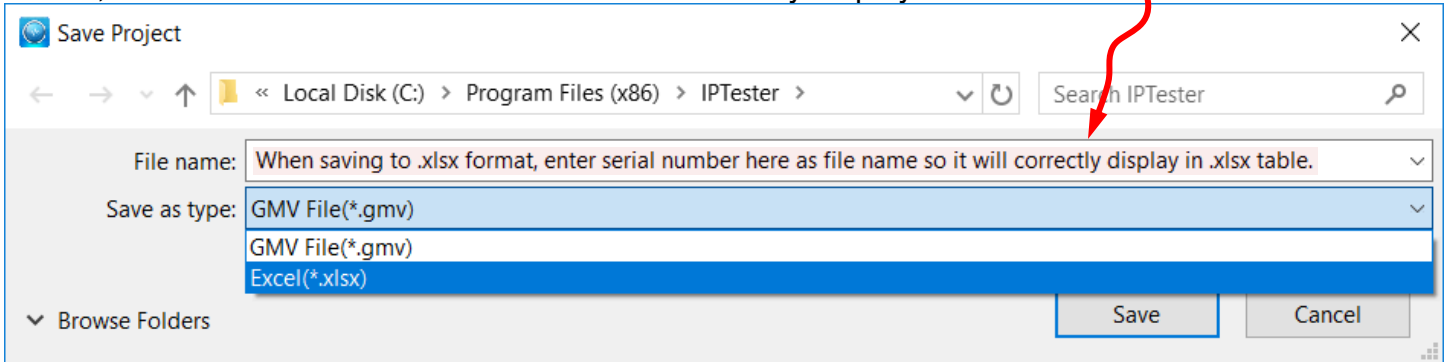


Step 4:

To save test results, first select your file location, name your file, then click:



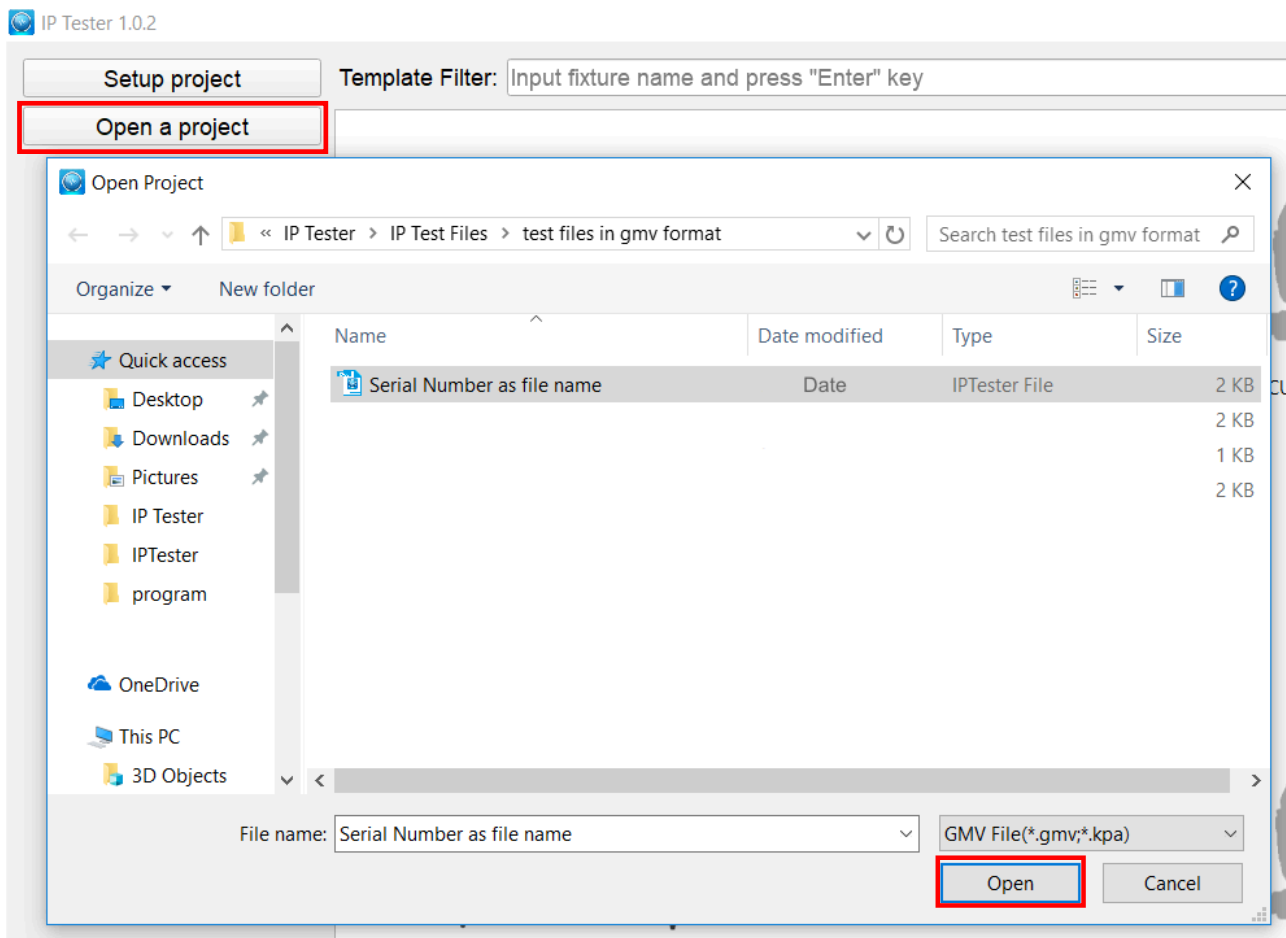
Test results can be saved in two file formats: **.gmv** and **.xlsx** (see below). When saving to **.xlsx** format, enter the device serial number so it will correctly display in **.xlsx** table.



Step 5:

To check the results that you saved in **.gmv**:

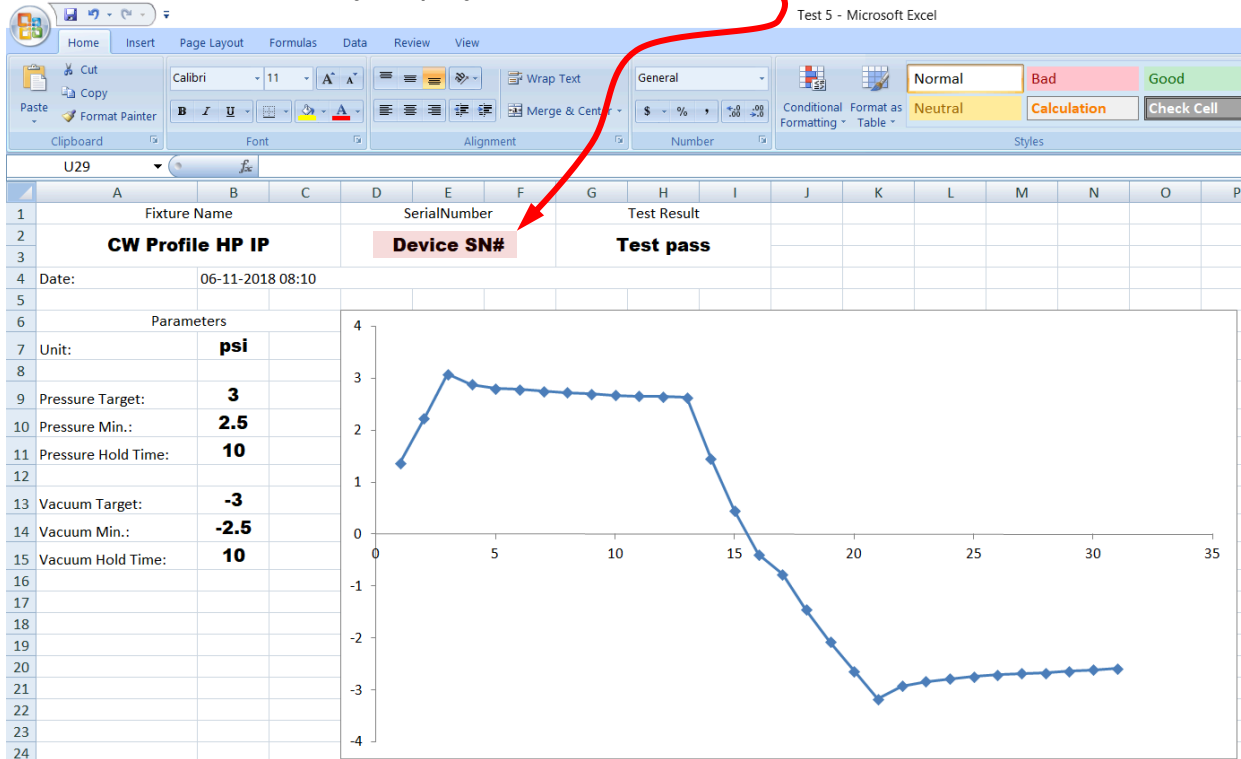
- The test results saved in **.gmv** format can be opened from your computer with the IPTester PC software. First click on 'Open a project', then navigate to the location where you saved the project file from Step 4 above, and click 'Open'.
- Depending on the unit setting (psi or kpa), the IP Tester can work independently of a PC and automatically saves test results in either a **.psi** or **.kpa** format on the Micro SD card, which can then be viewed by the IPTester PC software.



Step 5 (con't):

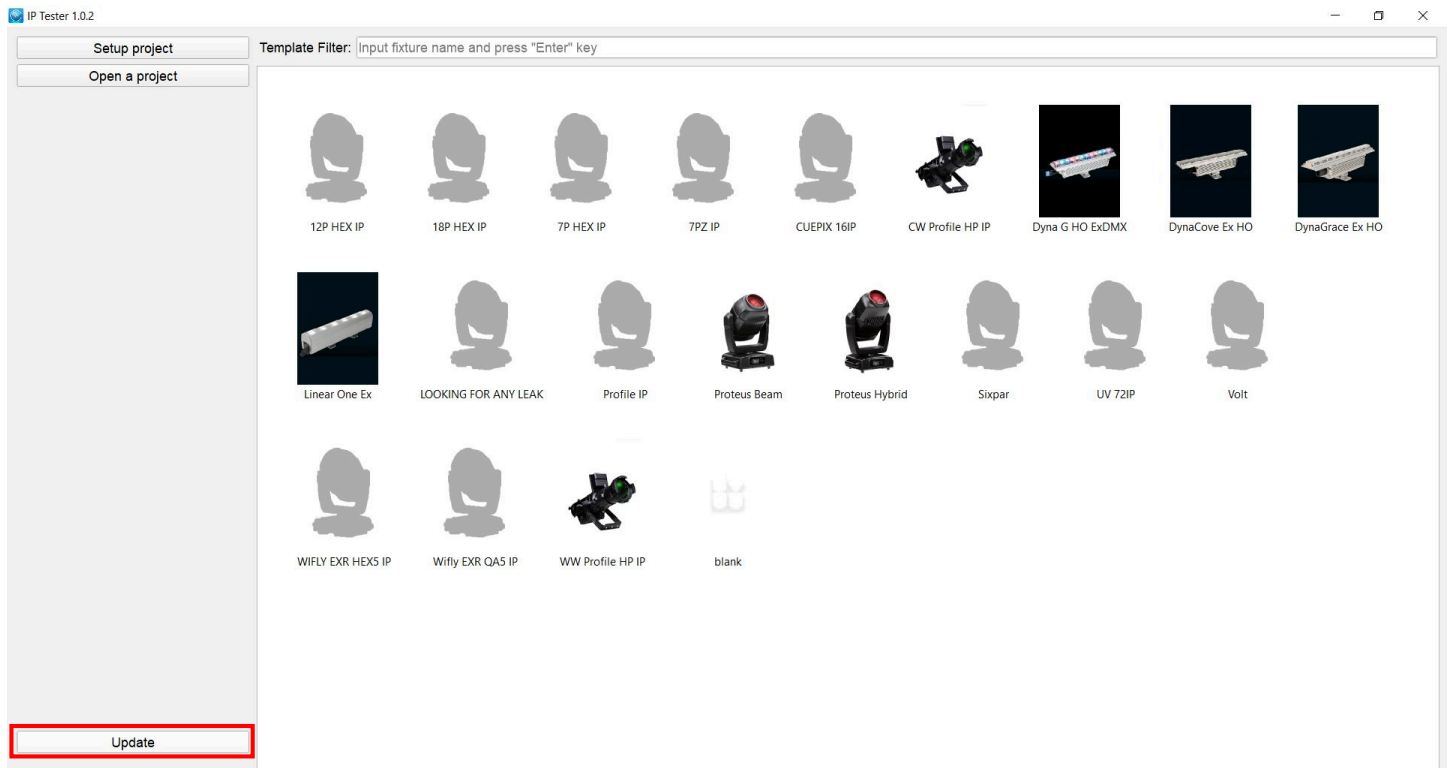
To check the results that you saved in **.xlsx**:

- Test results saved in **.xlsx** format can be opened with Microsoft Excel. Note that when saving to an **.xlsx** format, you should enter the serial number of the fixture in the file name box before you save it so that it will correctly display in the **.xlsx** table.

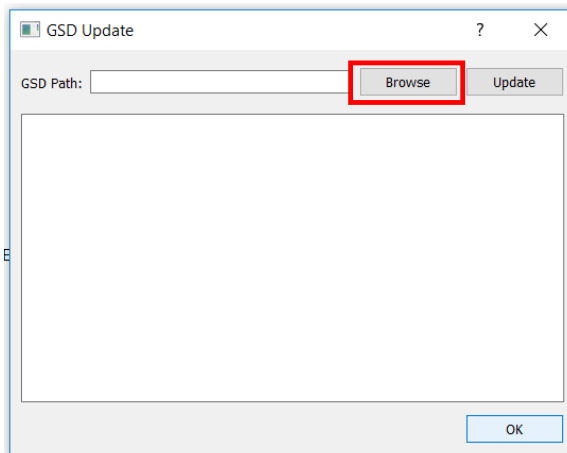


UPDATING IP TESTER SOFTWARE FROM PC SOFTWARE

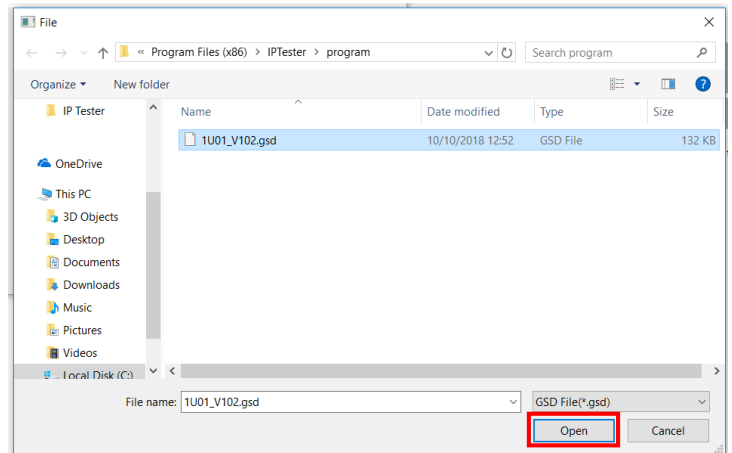
Step 1: With the IP Tester connected to your computer via the USB cable and the PC Software open, click 'Update'.



Step 2: Click 'Browse' and navigate to location of '...IPTester > Program > '1U01_V102.gsd', then click 'OK'.

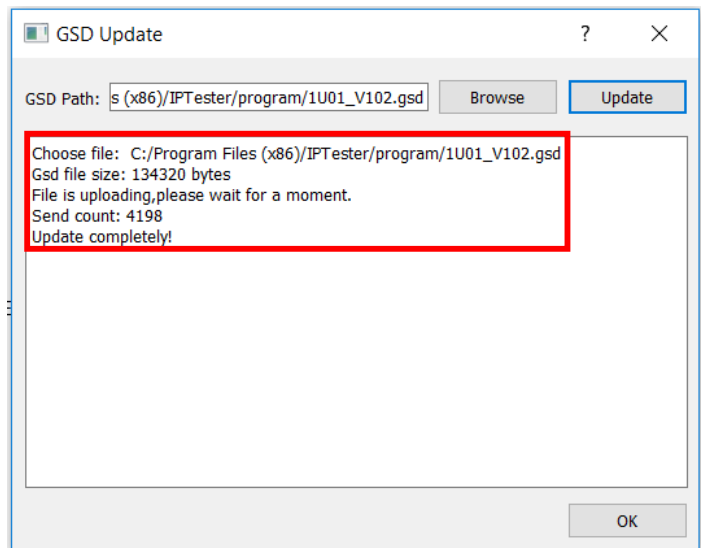
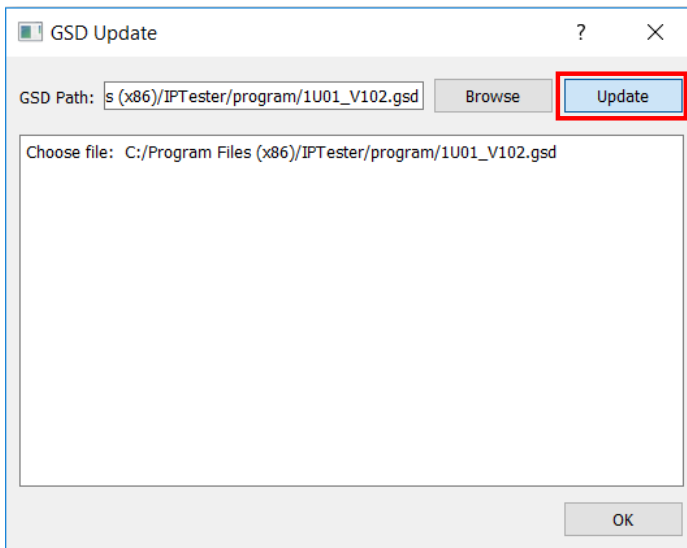


Step 3: Click on '1U01_V102.gsd' to select IP Tester software update, then click 'Open'.

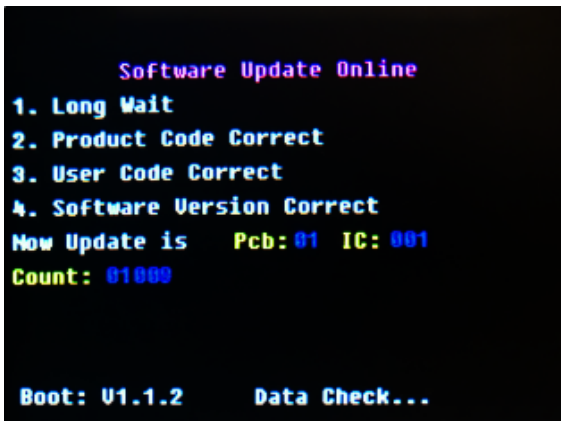


Step 4: With the IP Tester software update path opened, click 'Update'.h]

Step 5: After 'Update' is selected, the IP Tester PC Software will update the software of the IP Tester, and displays the status of the updating process after it is completed, displaying 'Update completely!'



Step 6: Also, during the updating process, the IP Tester screen displays the image on the left. Once it's complete, it automatically resorts to the default Mode selection screen menu shown below right.



To display the newly updated (current) software.



1. Select **Info** and press <Enter> ↵ 2. Press <Enter> ↵ again.

3. Press **MODE/ESC** to return to main mode menu

CASE DIMENSIONS

Weight: 15.4 lbs. (7kg)



OPTIONAL ACCESSORIES

| ORDER CODE | DESCRIPTION |
|----------------|---|
| 50501990323 | 3-5 ft Coiled Air Hose/Quick Connect Fitting |
| 9900010723 | M12 Treaded Brass Nozzle/Push-to-Connect Fitting |
| IP TESTER PLUG | M12x1.5 Hex Socket Cap Head A4-70 Stainless Steel Bolt/Washer |
| NEU007 | Power Cable |

