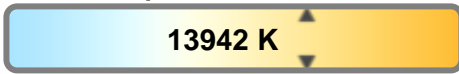


Color Temperature:



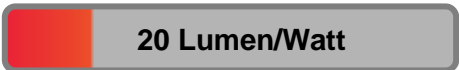
**Total Lumen Output:**  
**9352 lm**

Light Quality:



**Peak:**  
**70199 cd**

Light Efficiency:



**Power: 462 W**



**Test: Full On**

**Date: 7/2/2018**

**Voltage: 110 V**

**Current: 4.20 A**

**Frequency: 60 Hz**

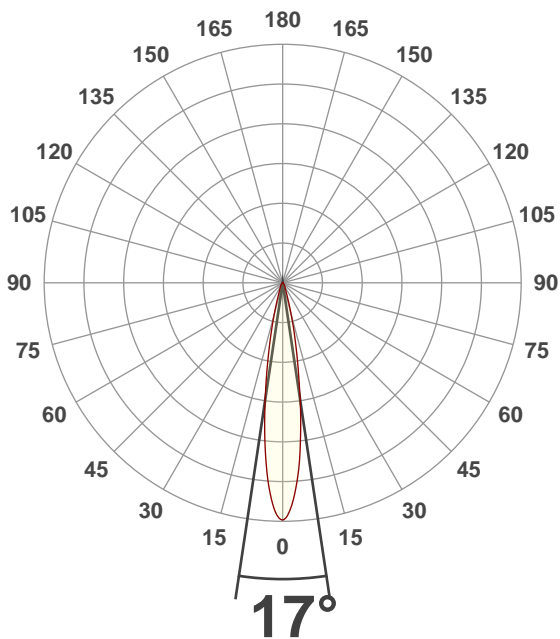
**CRI: 73.6**

**CQS: 84.6**

**TM30: 73.8**

**Note:**

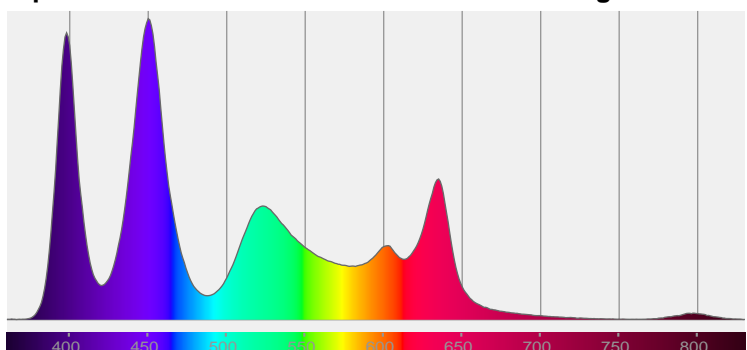
**Beam Angle**



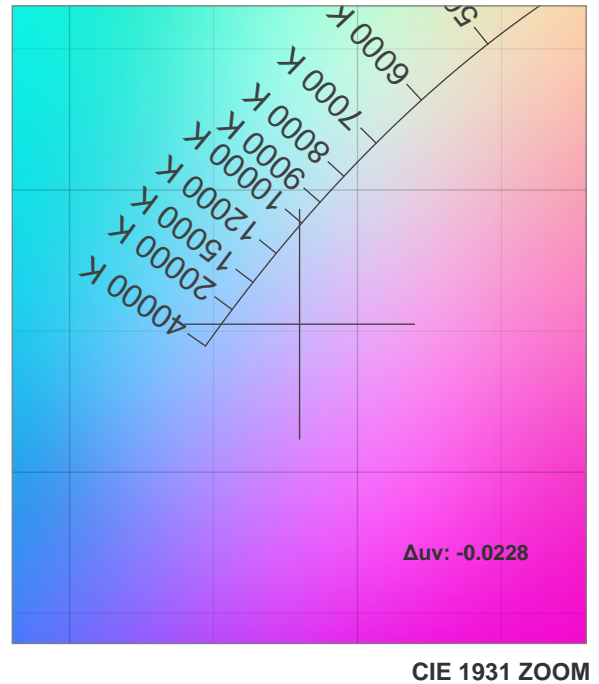
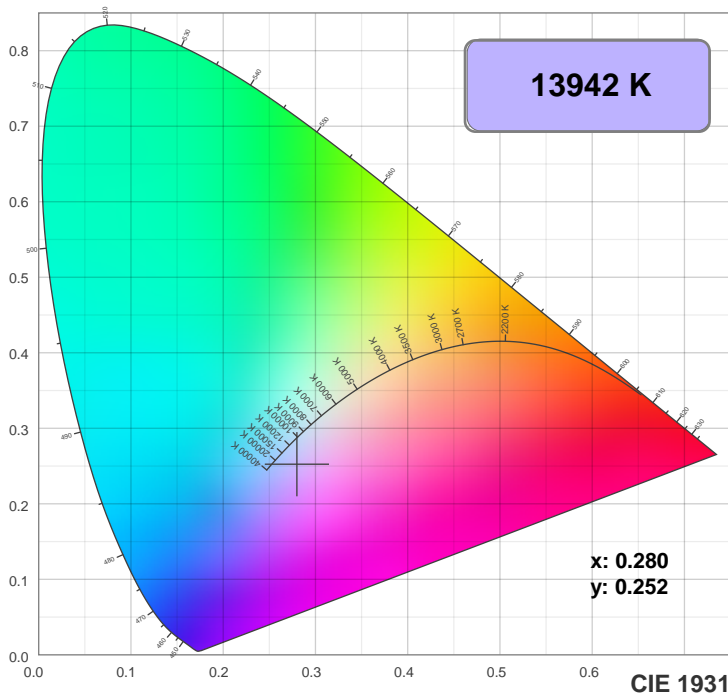
Beam Angle 50%	Field Angle 10%	Cutoff Angle 2.5%
17°	32.8°	51.1°

**Spectra**

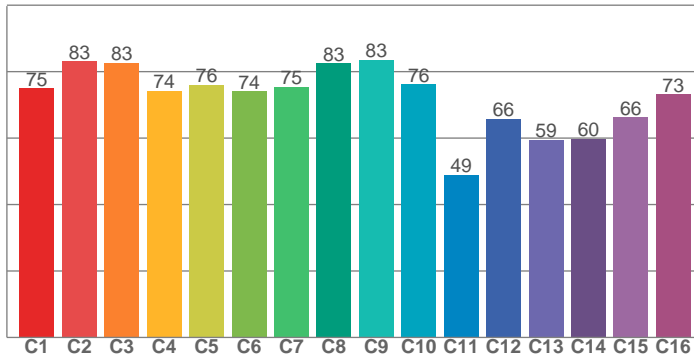
**Dominant Wavelength: 392nm**



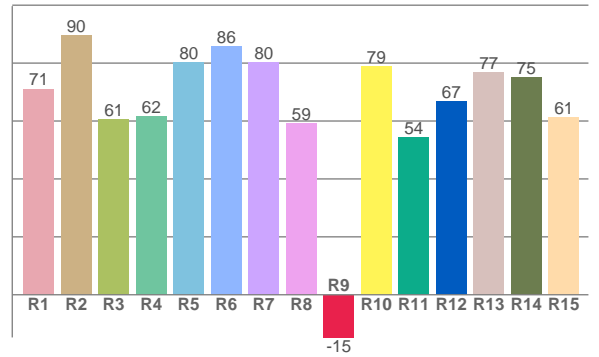
## Color Details



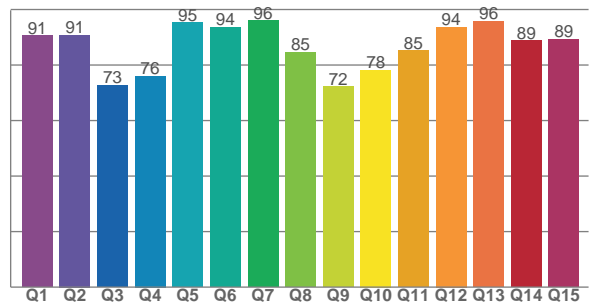
**TM30: 73.8**



**CRI: 73.6 (R1-R8)**



**CQS: 84.6**



CRI R values, only R1-R8 are used to calculate final CRI value

R1	R2	R3	R4	R5	R6	R7	R8	R9	R10	R11	R12	R13	R14	R15
71.1	89.5	60.6	61.6	80.2	85.9	80.3	59.3	-14.7	78.8	54.4	66.7	76.8	75.1	61.2

TM30 C Values, 16 binned values out of total of 99 C values

C1	C2	C3	C4	C5	C6	C7	C8	C9	C10	C11	C12	C13	C14	C15	C16
74.9	83.1	82.6	74.2	76.0	74.0	75.5	82.5	83.5	76.1	49.0	65.7	59.5	59.8	66.3	73.2

CQS Q Values

Q1	Q2	Q3	Q4	Q5	Q6	Q7	Q8	Q9	Q10	Q11	Q12	Q13	Q14	Q15
90.6	90.8	72.7	76.0	95.3	93.6	96.0	84.6	72.3	78.2	85.1	93.7	95.8	88.8	89.3

## Color Parameters

Color Temperature	Color Rendering Index	Red Component	Color Fidelity	Color Gamut	Color Quality Scale	Color Coordinate CIE 1931	Color Coordinate CIE 1931	Color Coordinate	Color Coordinate	Color Deviation from Black Body
CCT	CRI	CRI R9	TM30 Rf	TM30 Rg	CQS	x	y	u	v	$\Delta uv$
13942 K	73.6	-14.7	73.8	114.7	84.6	0.280	0.252	0.205	0.277	-0.0228

## TM30 Details

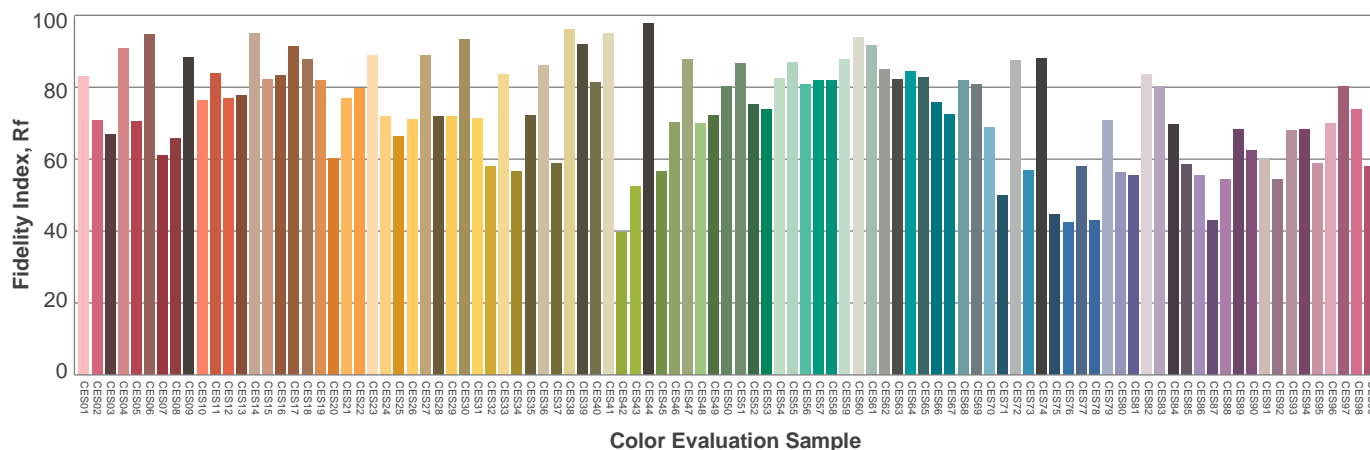
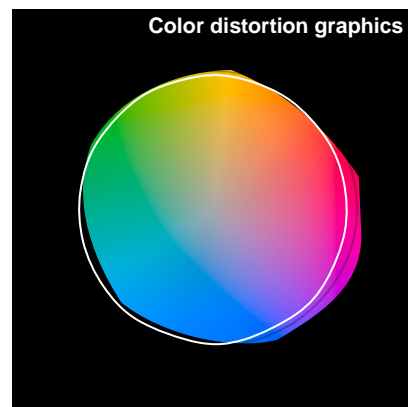
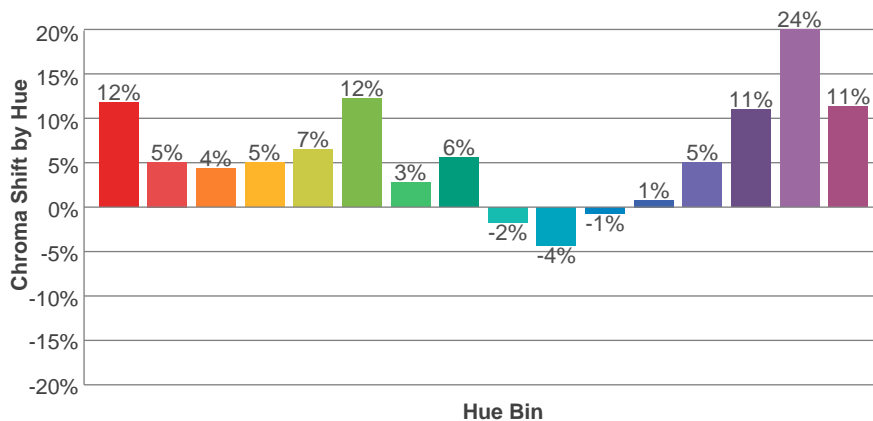
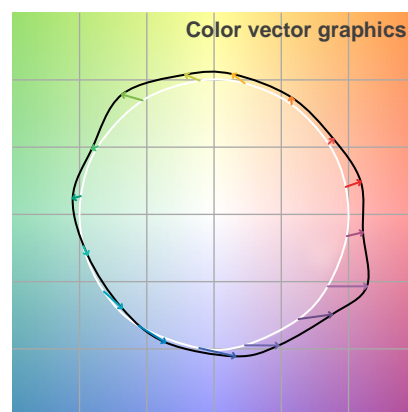
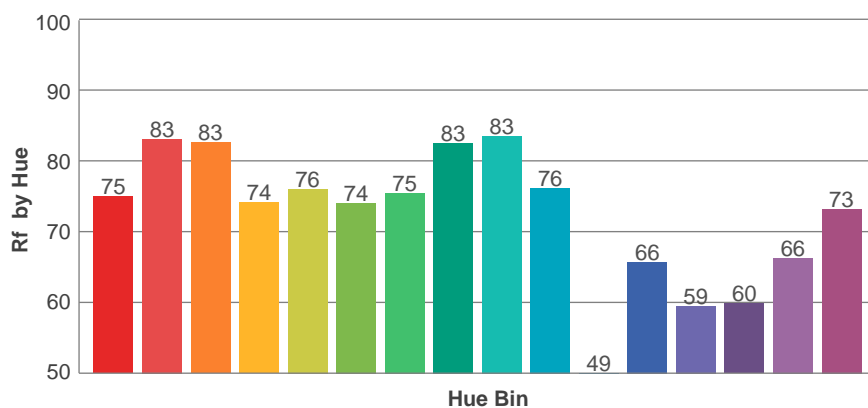
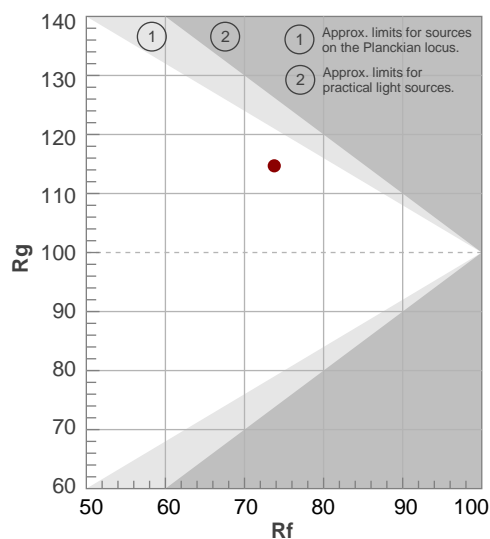
**Rf 73.8**

Fidelity Index Rf

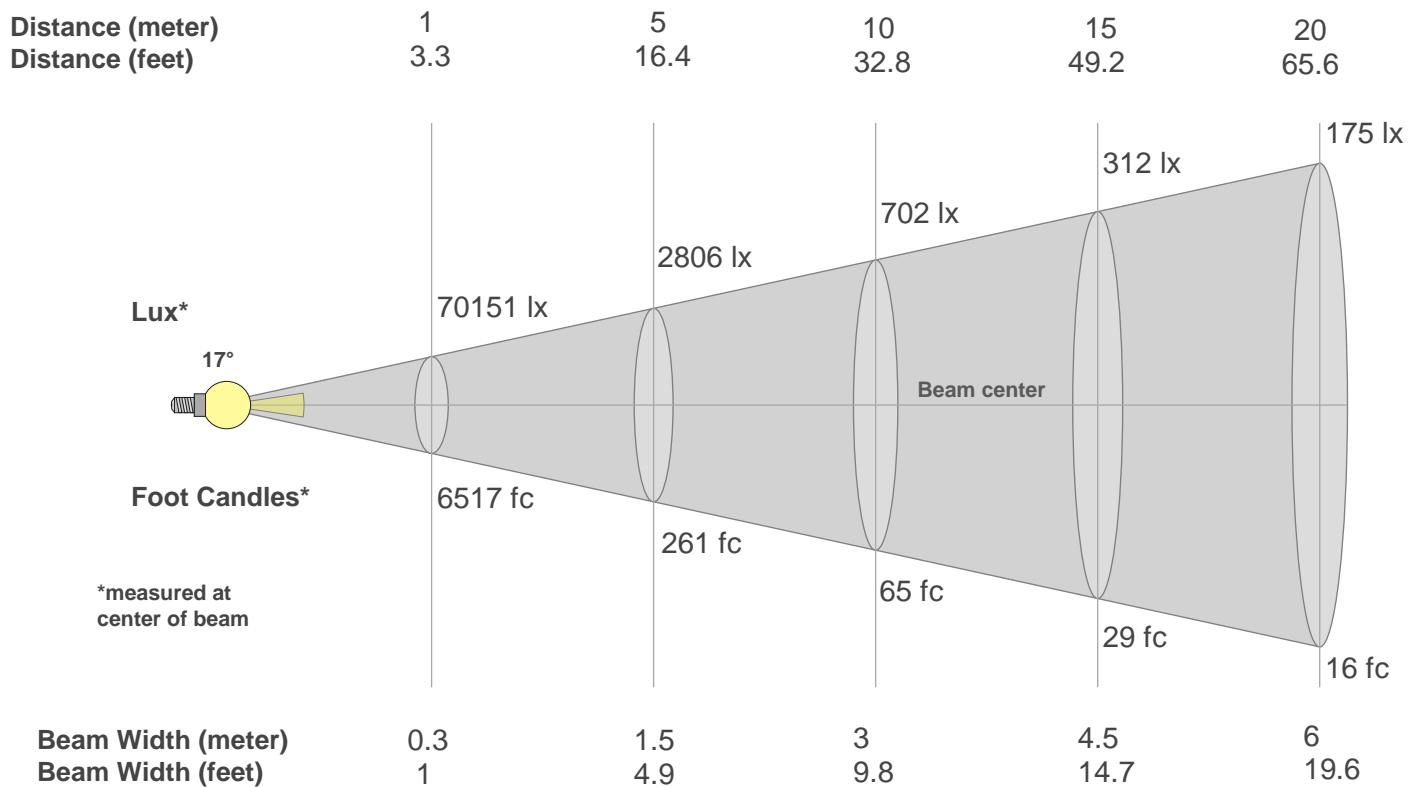
**Rg 114.7**

Gamut Index Rg

Hue Bin	R <sub>f</sub>	Graphic shifts (%)	
		Chroma	Hue
1	75	12%	2%
2	83	5%	1%
3	83	4%	3%
4	74	5%	10%
5	76	7%	10%
6	74	12%	10%
7	75	3%	4%
8	83	6%	3%
9	83	-2%	7%
10	76	-4%	18%
11	49	-1%	23%
12	66	1%	27%
13	59	5%	24%
14	60	11%	23%
15	66	24%	16%
16	73	11%	5%



## Beam Details



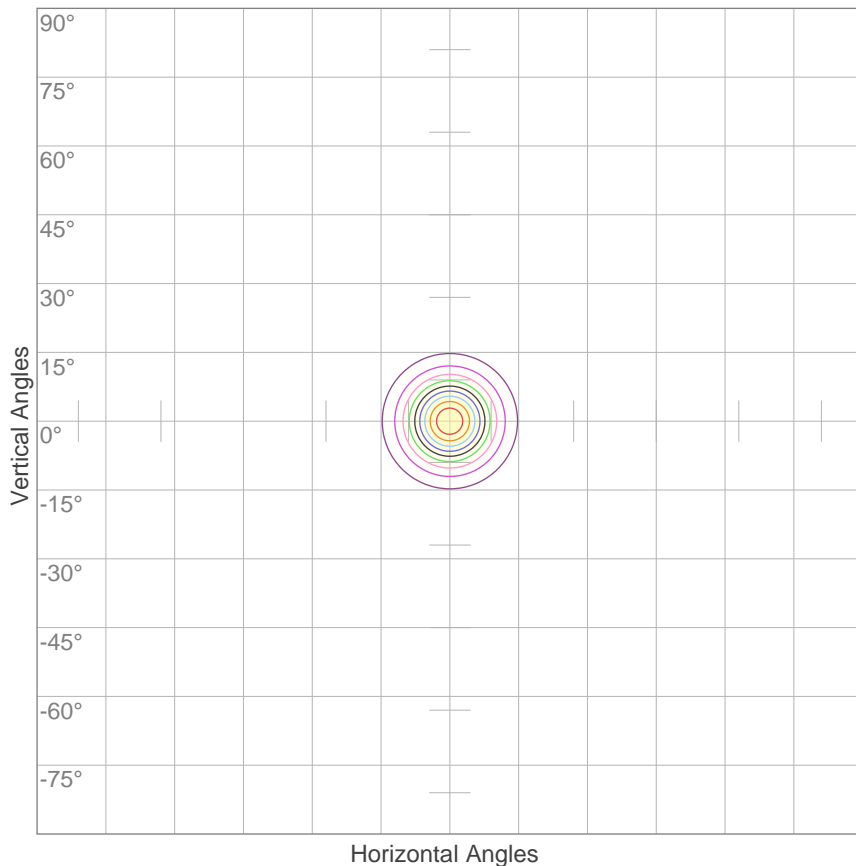
Beam Intensities from 1-20m

m	1	2	3	4	5	6	7	8	9	10	11	12	13	14	15	16	17	18	19	20
ft	3.3	6.6	9.8	13.1	16.4	19.7	23	26.2	29.5	32.8	36.1	39.4	42.7	45.9	49.2	52.5	55.8	59.1	62.3	65.6
lx	70151	17538	7795	4384	2806	1949	1432	1096	866	702	580	487	415	358	312	274	243	217	194	175
fc	6517.2	1629.3	724.1	407.3	260.7	181	133	101.8	80.5	65.2	53.9	45.3	38.6	33.3	29	25.5	22.6	20.1	18.1	16.3

Beam Angle 50%	Field Angle 10%	Cutoff Angle 2,5%	Intensity Ratio in 120° Cone	Intensity Ratio in 90° Cone
17°	32.8°	51.1°	99.7%	96.0%

## ISO Diagrams

### ISO Candela Diagram



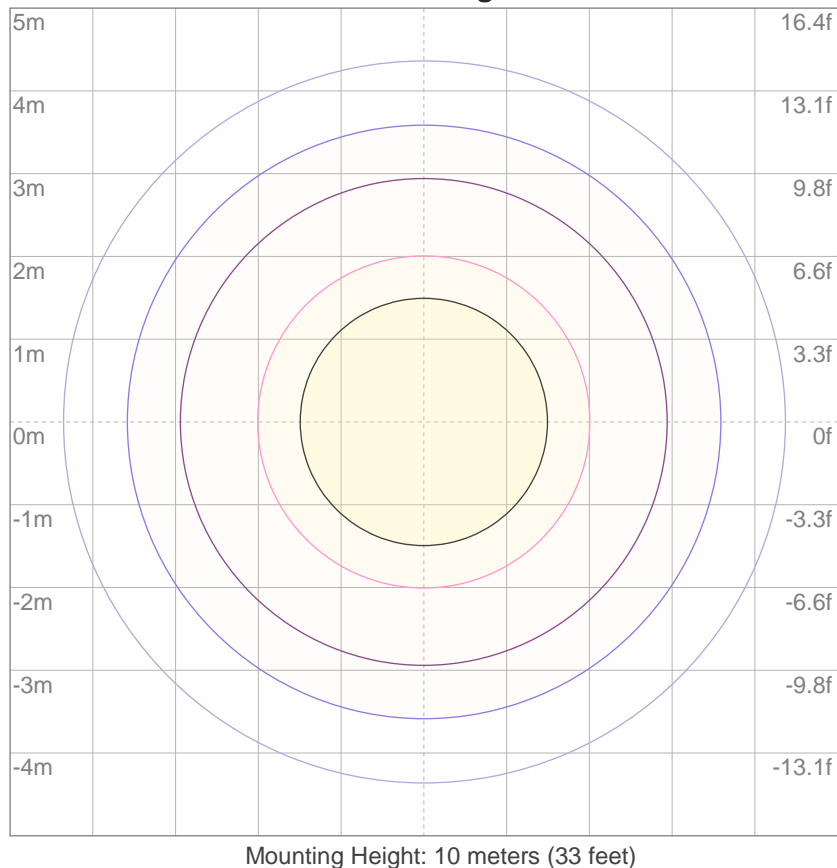
10%	7015 cd
20%	14030 cd
30%	21045 cd
40%	28060 cd
50%	35075 cd
60%	42090 cd
70%	49106 cd
80%	56121 cd
90%	63136 cd

#### Conditions:

Number of c-planes: 2

Candela at center: 70151 cd

### ISO Lux Diagram



3%	21.0 lx
5%	35.1 lx
10%	70.2 lx
30%	210 lx
50%	351 lx

#### Conditions:

Number of c-planes: 2

Lux at center: 702 lx

*Lux distribution on a surface when lamp is mounted at 10 meters from the surface.*