

Color Temperature:

19425 K

Total Lumen Output:
3548 lm

Light Quality:

CRI: 72.9

Peak:
27284 cd

Light Efficiency:

22 Lumen/Watt

Power: 161 W



Test: Full On

Date: 3/23/2018

Voltage: 114 V

Current: 1.42 A

Frequency: 60 Hz

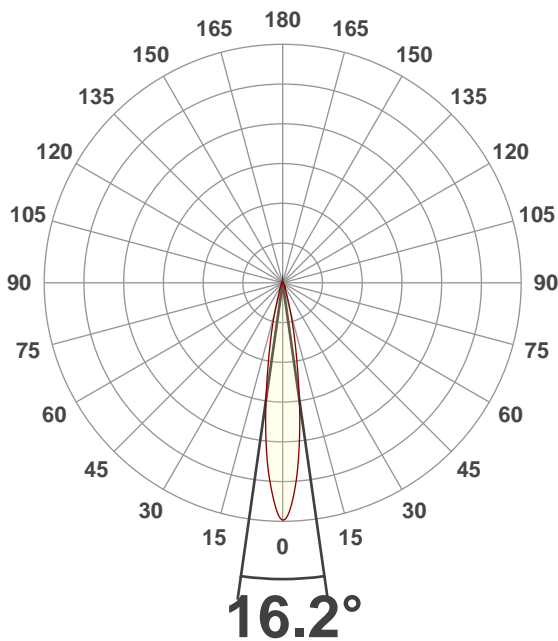
CRI: 72.9

CQS: 85.4

TM30: 73.9

Note:

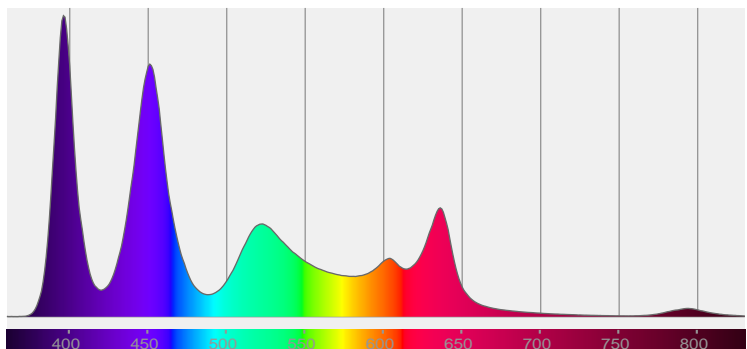
Beam Angle



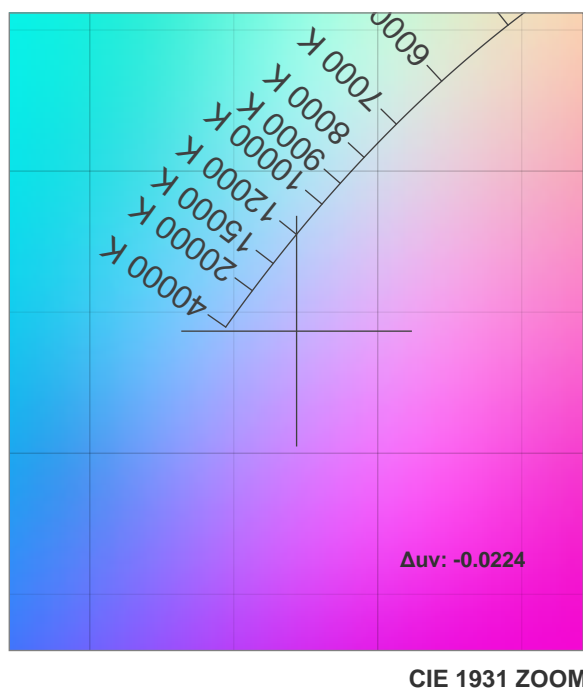
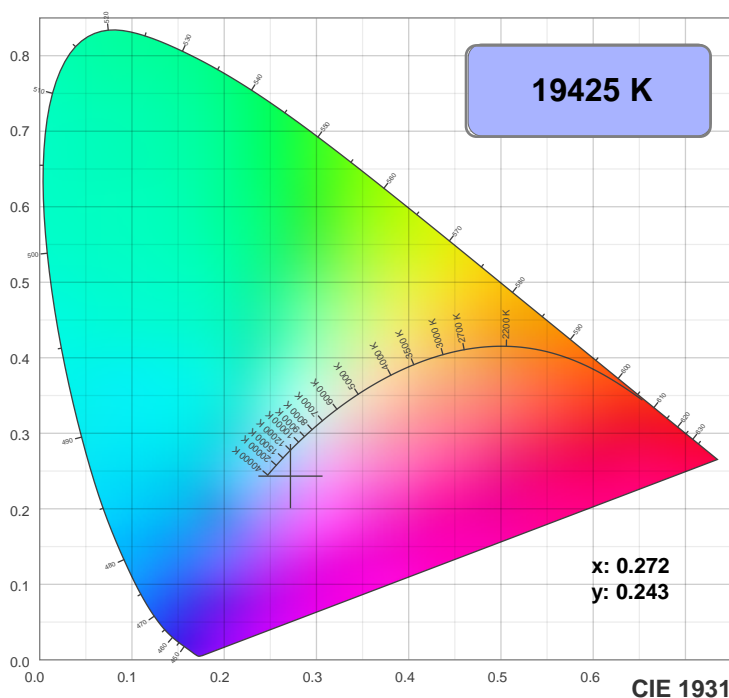
Beam Angle 50%	Field Angle 10%	Cutoff Angle 2.5%
16.2°	32.1°	50.3°

Spectra

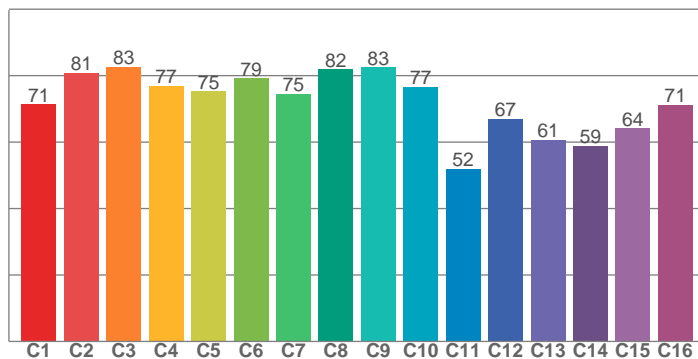
Dominant Wavelength: 444nm



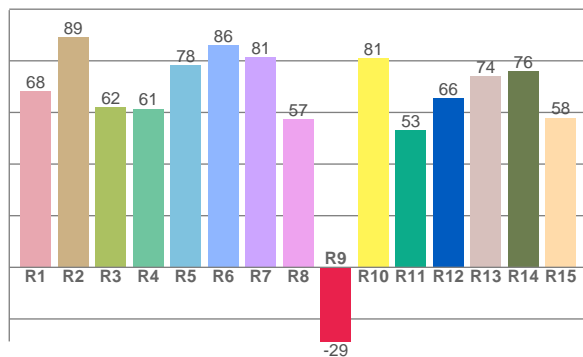
Color Details



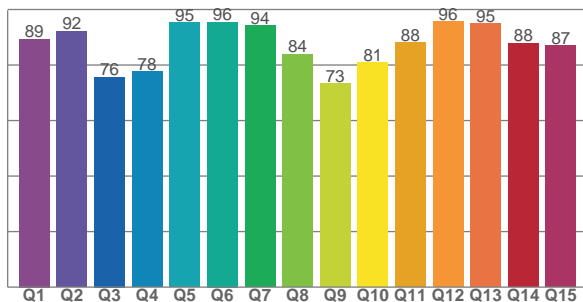
TM30: 73.9



CRI: 72.9 (R1-R8)



CQS: 85.4



CRI R values, only R1-R8 are used to calculate final CRI value

R1	R2	R3	R4	R5	R6	R7	R8	R9	R10	R11	R12	R13	R14	R15
68.3	89.0	61.9	61.4	78.2	86.0	81.5	57.3	-28.7	81.0	53.0	65.5	74.1	75.9	58.0

TM30 C Values, 16 binned values out of total of 99 C values

C1	C2	C3	C4	C5	C6	C7	C8	C9	C10	C11	C12	C13	C14	C15	C16
71.3	80.8	82.6	76.9	75.3	79.2	74.6	82.0	82.5	76.5	51.9	66.9	60.6	58.9	64.1	71.2

CQS Q Values

Q1	Q2	Q3	Q4	Q5	Q6	Q7	Q8	Q9	Q10	Q11	Q12	Q13	Q14	Q15
89.3	92.1	75.7	77.5	95.3	95.5	94.1	83.9	73.2	80.8	88.0	95.6	94.8	87.9	87.1

Color Parameters

Color Temperature	Color Rendering Index	Red Component	Color Fidelity	Color Gamut	Color Quality Scale	Color Coordinate CIE 1931	Color Coordinate CIE 1931	Color Coordinate	Color Coordinate	Color Deviation from Black Body
CCT	CRI	CRI R9	TM30 Rf	TM30 Rg	CQS	x	y	u	v	Δuv
19425 K	72.9	-28.7	73.9	114.7	85.4	0.272	0.243	0.202	0.272	-0.0224

TM30 Details

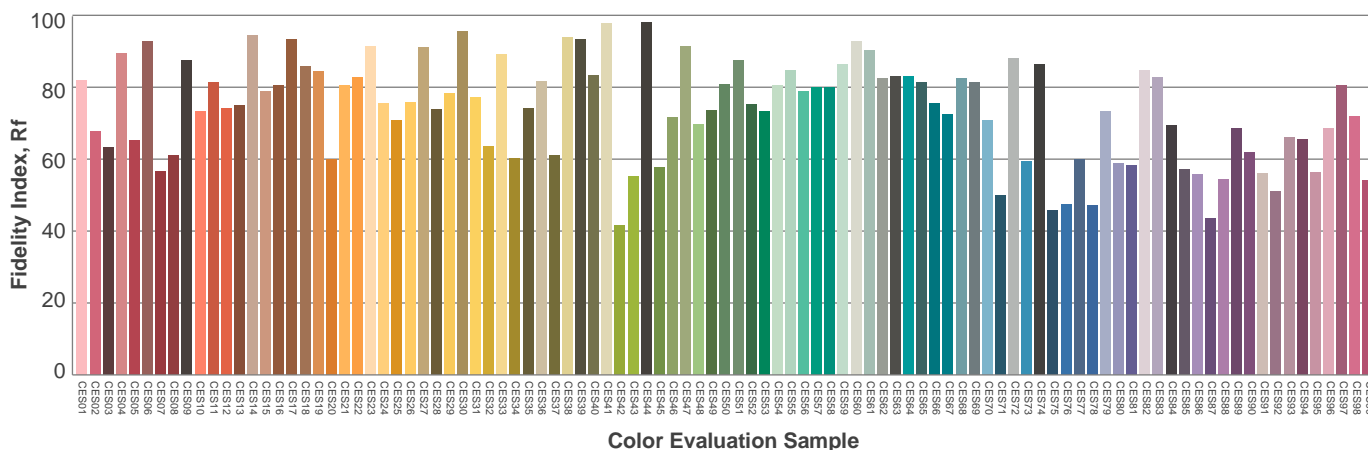
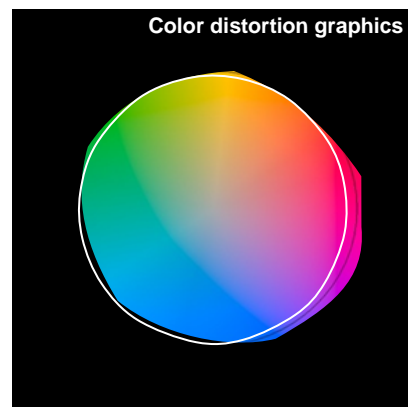
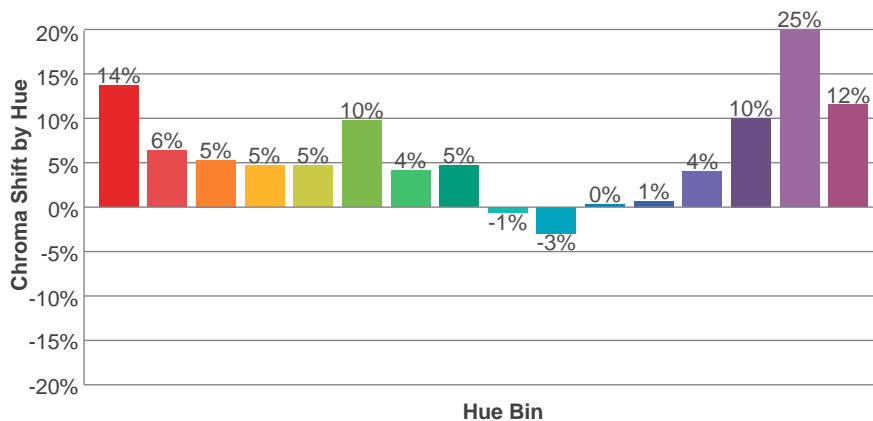
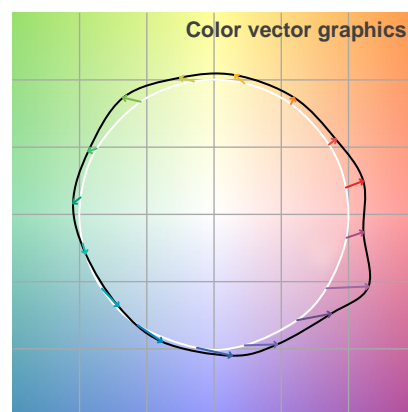
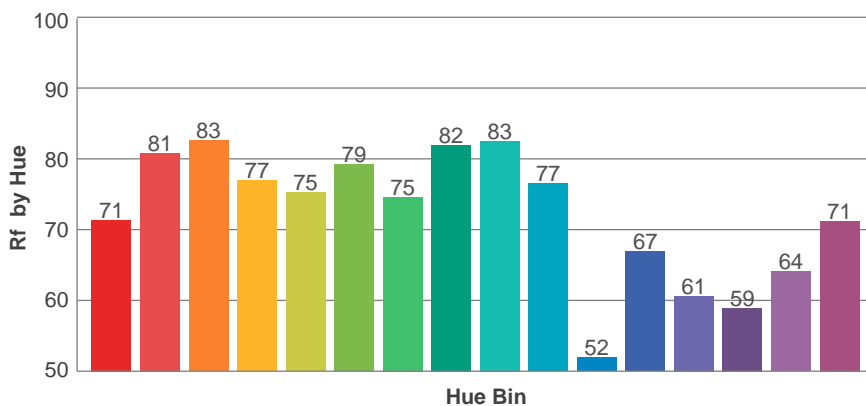
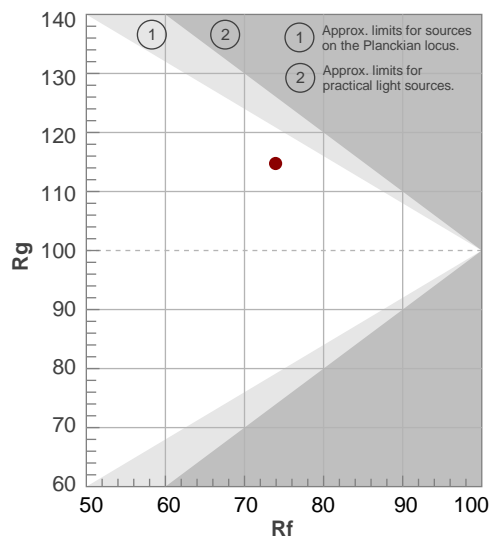
Rf 73.9

Fidelity Index Rf

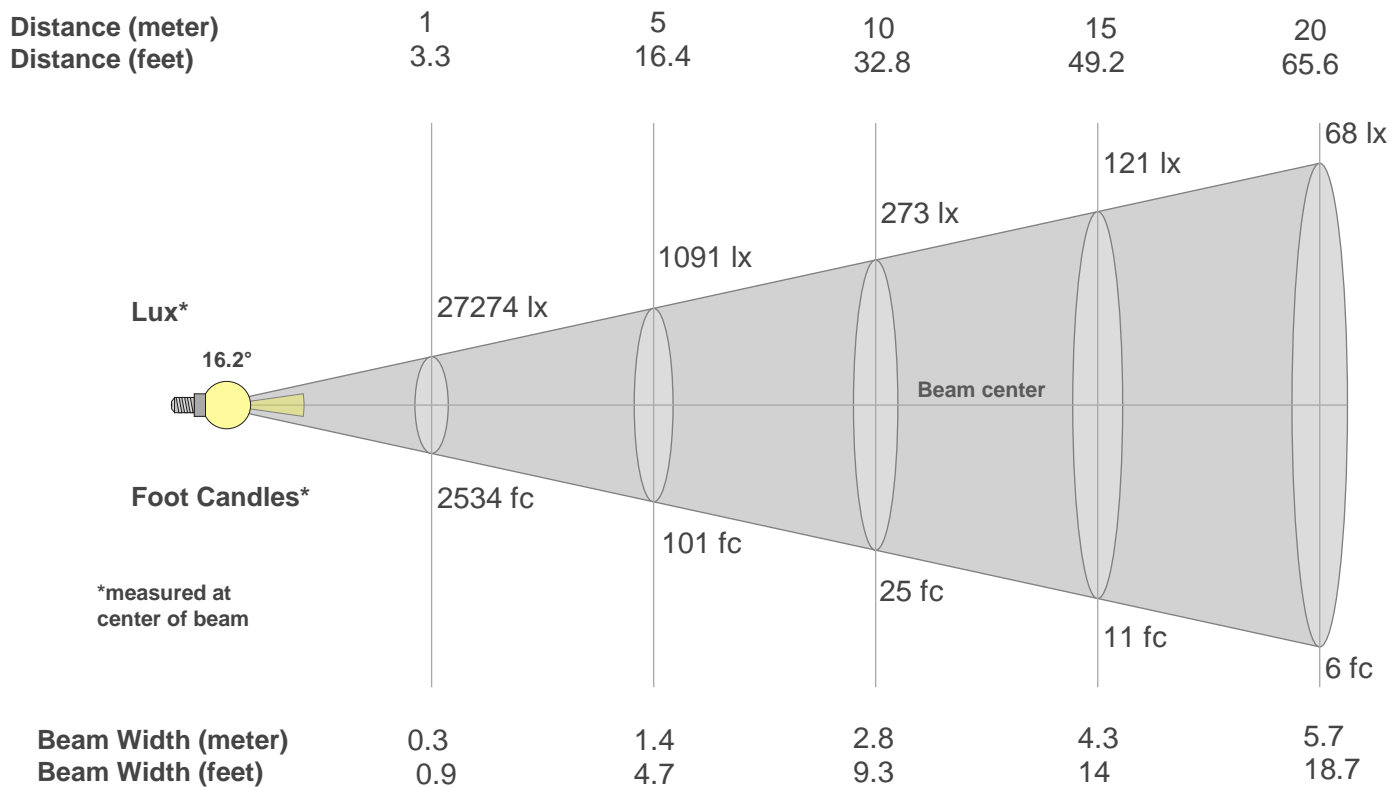
Rg 114.7

Gamut Index Rg

Hue Bin	R _f	Graphic shifts (%)	
		Chroma	Hue
1	71	14%	2%
2	81	6%	0%
3	83	5%	1%
4	77	5%	8%
5	75	5%	9%
6	79	10%	9%
7	75	4%	5%
8	82	5%	5%
9	83	-1%	8%
10	77	-3%	18%
11	52	0%	22%
12	67	1%	27%
13	61	4%	24%
14	59	10%	24%
15	64	25%	18%
16	71	12%	7%



Beam Details



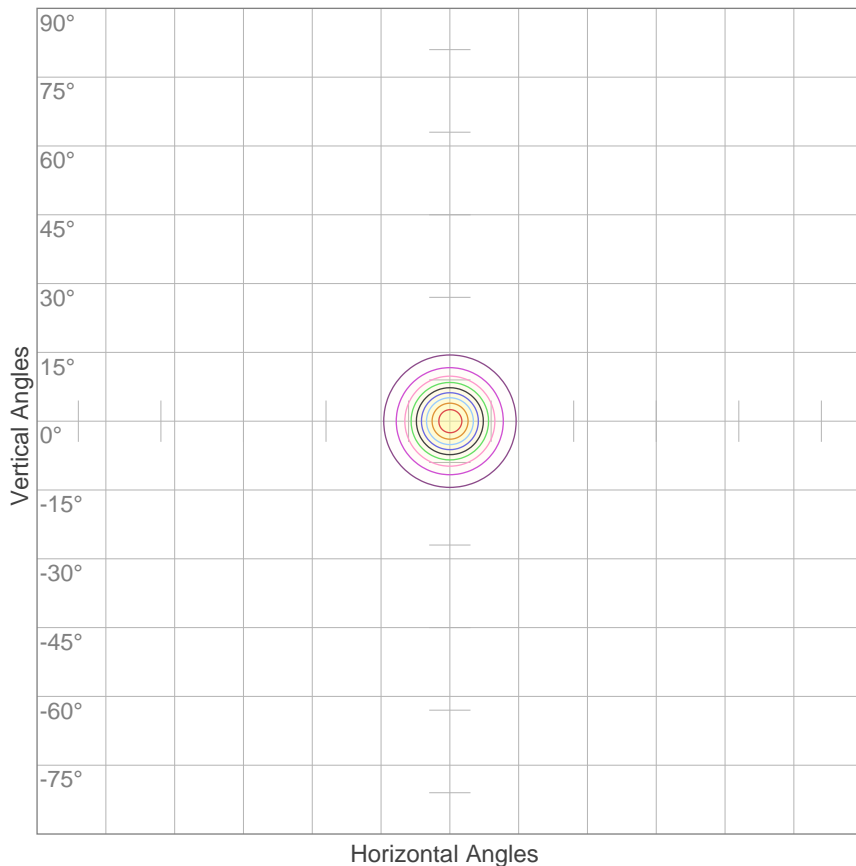
Beam Intensities from 1-20m

m	1	2	3	4	5	6	7	8	9	10	11	12	13	14	15	16	17	18	19	20
ft	3.3	6.6	9.8	13.1	16.4	19.7	23	26.2	29.5	32.8	36.1	39.4	42.7	45.9	49.2	52.5	55.8	59.1	62.3	65.6
lx	27274	6819	3030	1705	1091	758	557	426	337	273	225	189	161	139	121	107	94	84	76	68
fc	2533.9	633.5	281.5	158.4	101.4	70.4	51.7	39.6	31.3	25.3	20.9	17.6	15	12.9	11.3	9.9	8.8	7.8	7	6.3

Beam Angle 50%	Field Angle 10%	Cutoff Angle 2,5%	Intensity Ratio in 120° Cone	Intensity Ratio in 90° Cone
16.2°	32.1°	50.3°	98.2%	93.4%

ISO Diagrams

ISO Candela Diagram



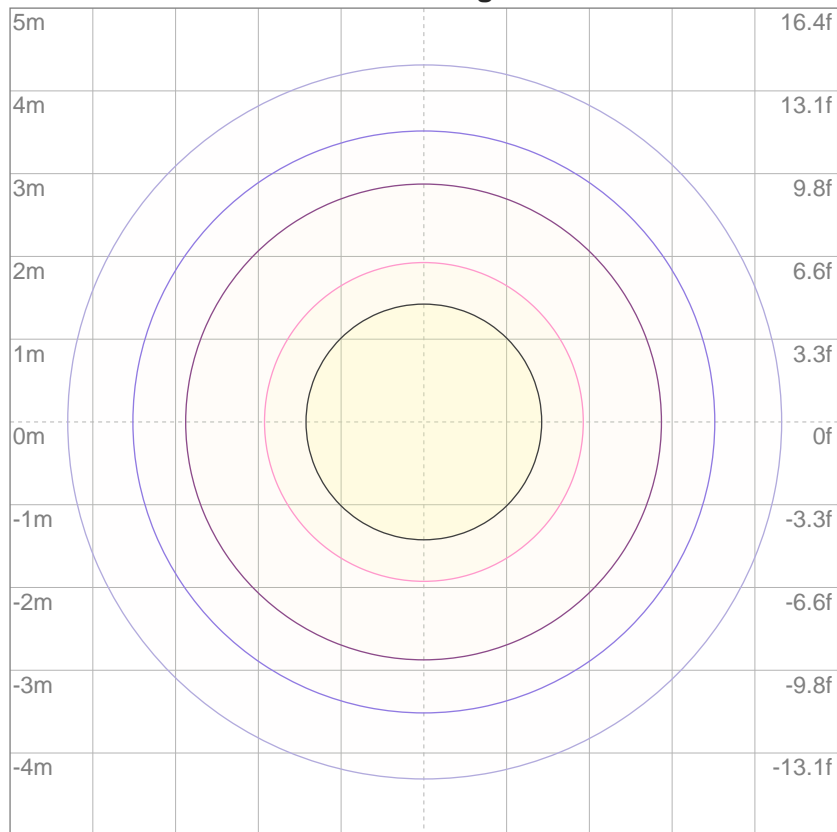
10%	2727 cd
20%	5455 cd
30%	8182 cd
40%	10910 cd
50%	13637 cd
60%	16365 cd
70%	19092 cd
80%	21820 cd
90%	24547 cd

Conditions:

Number of c-planes: 2

Candela at center: 27274 cd

ISO Lux Diagram



3%	8.18 lx
5%	13.6 lx
10%	27.3 lx
30%	81.8 lx
50%	136 lx

Conditions:

Number of c-planes: 2

Lux at center: 273 lx

*Lux distribution on a surface
when lamp is mounted at 10
meters from the surface.*

Mounting Height: 10 meters (33 feet)