

Light Efficiency:

Infinity Lumen/Watt

Output: 2913 lm

Light Quality:

CRI: 80.0

Peak: 5124 cd

Color Temperature:

4111 K

Power: - W

PF: n/a



Beam Angle

39.2°

Product Name:

ZCL BAR 300 IP

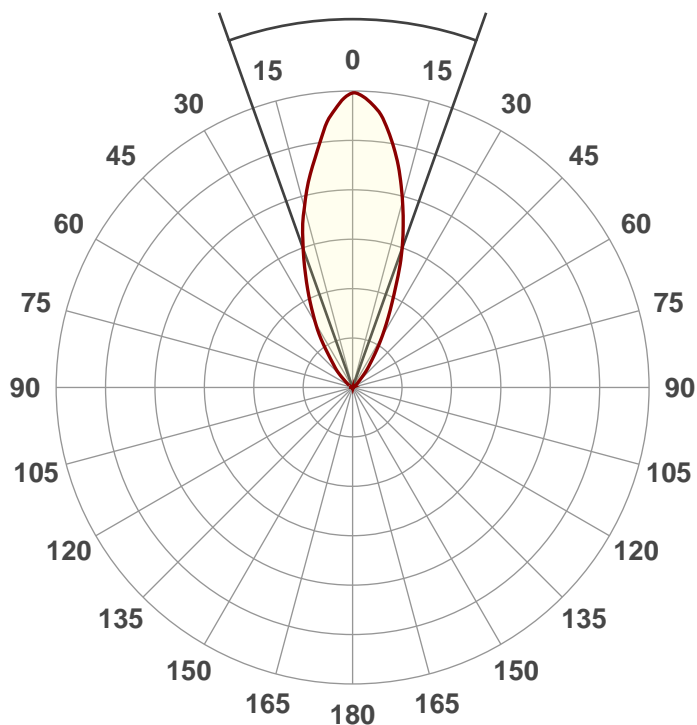
Test:

Zoom In CRI Value

Date:

2/20/2018

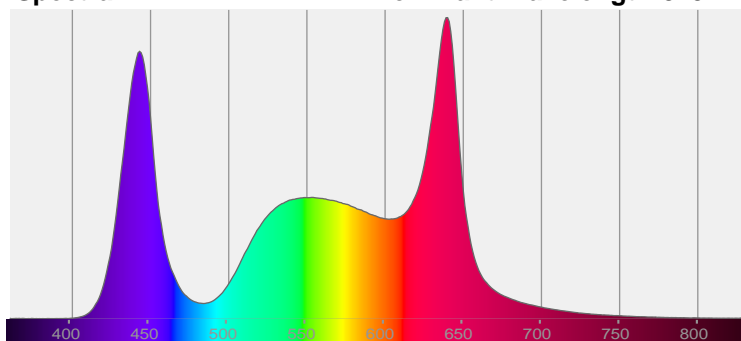
Note:



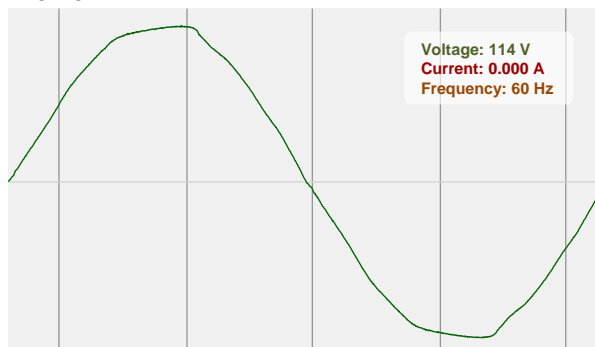
CIE 1931
x: 0.361
y: 0.313

Spectra

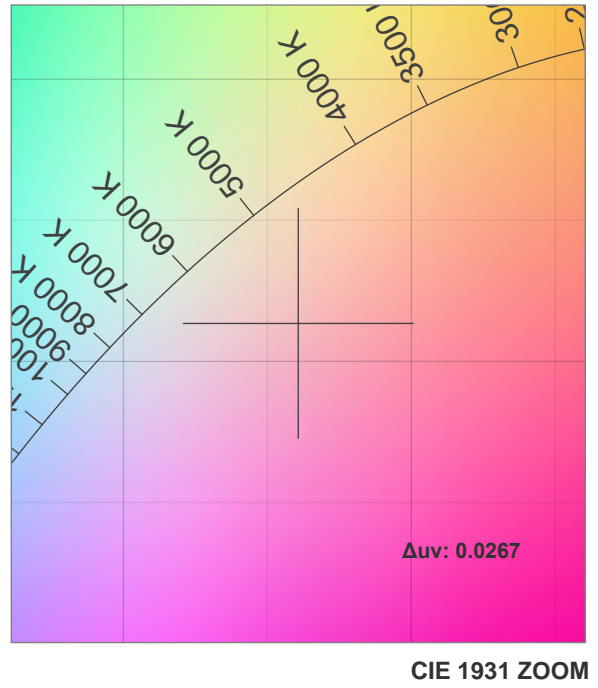
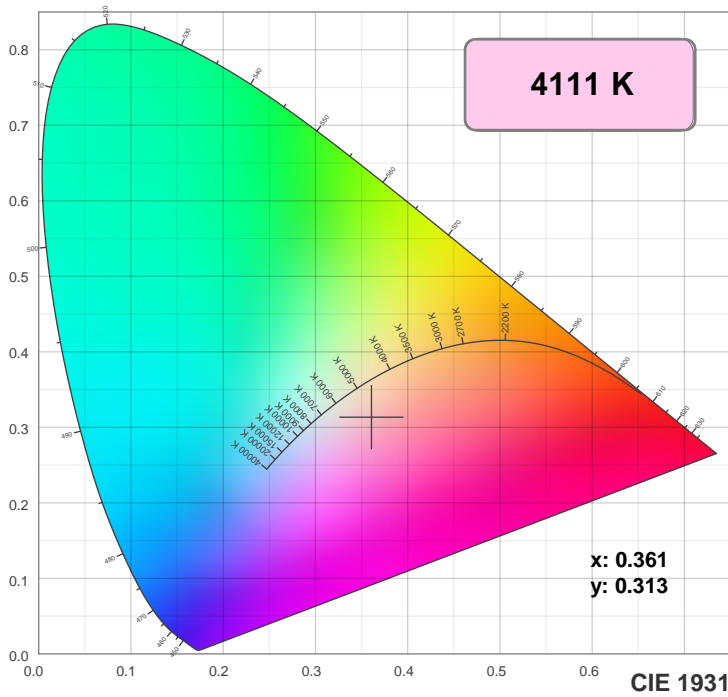
Dominant Wavelength: 829nm



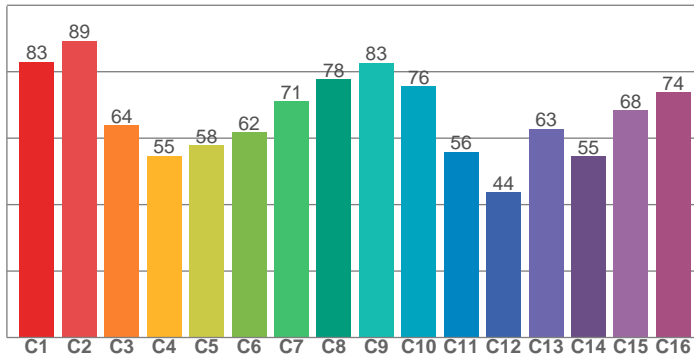
Power



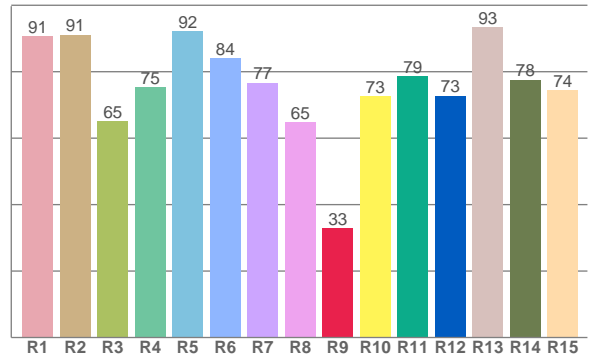
Color Details



TM30: 67.8



CRI: 80.0 (R1-R8)



CRI R values, only R1-R8 are used to calculate final CRI value

R1	R2	R3	R4	R5	R6	R7	R8	R9	R10	R11	R12	R13	R14	R15
90.6	91.1	65.1	75.3	92.3	84.0	76.7	64.8	32.9	72.6	78.6	72.7	93.4	77.6	74.4

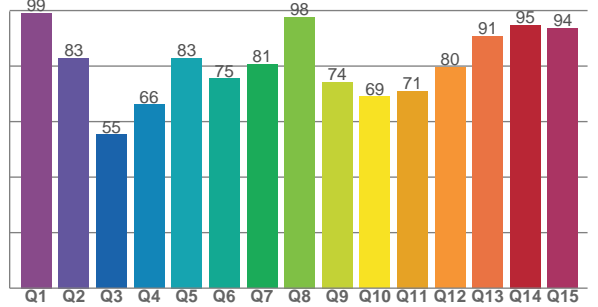
TM30 C values, 16 binned values out of total of 99 C values

C1	C2	C3	C4	C5	C6	C7	C8	C9	C10	C11	C12	C13	C14	C15	C16
83.0	89.3	63.8	54.7	57.9	61.7	71.0	77.7	82.7	75.6	55.8	43.7	62.8	54.5	68.4	73.8

CQS Q values

Q1	Q2	Q3	Q4	Q5	Q6	Q7	Q8	Q9	Q10	Q11	Q12	Q13	Q14	Q15
99.1	82.9	55.3	66.2	82.9	75.4	80.7	97.7	74.3	69.0	71.1	79.6	90.8	94.8	93.6

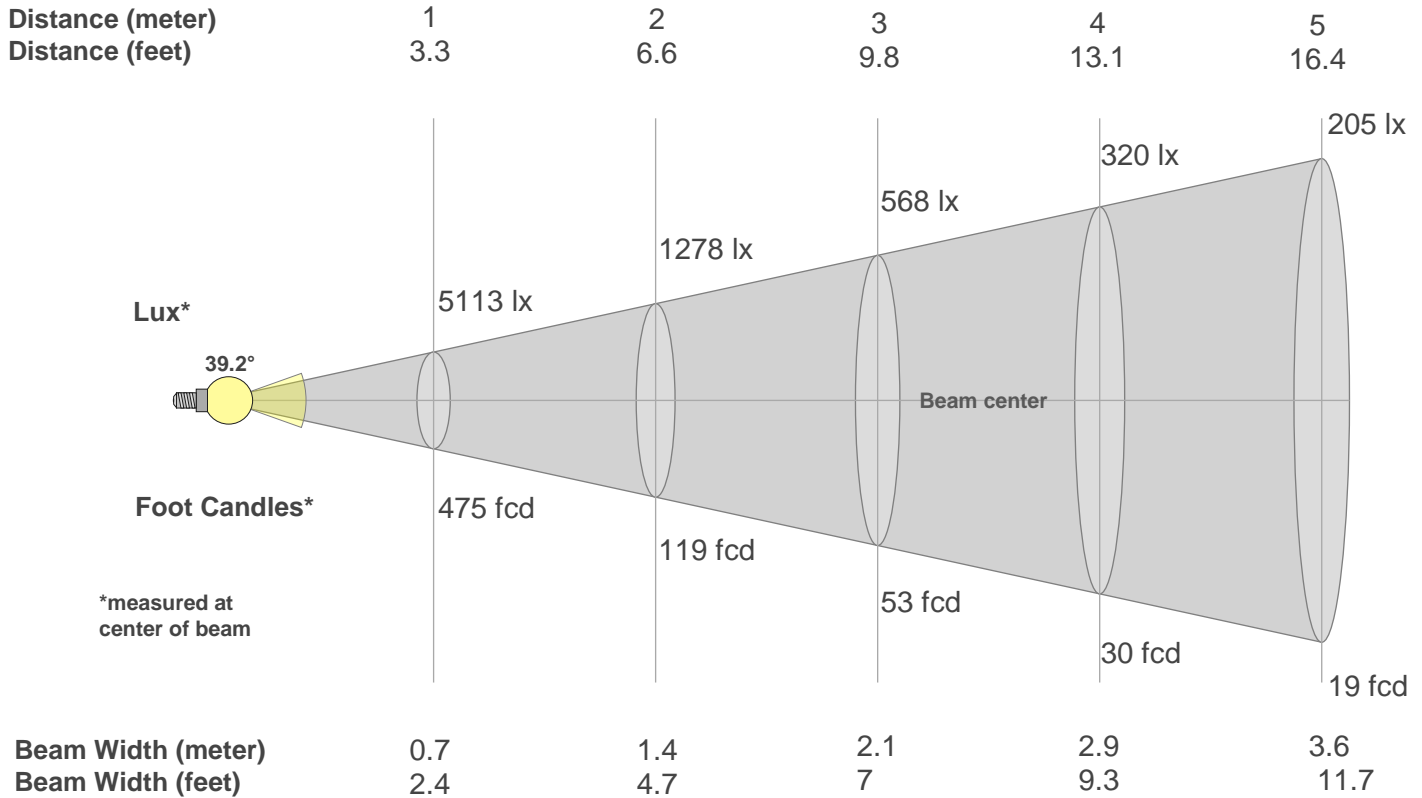
CQS: 77.3



Color Parameters

Color Temperature	Color Rendering Index	Red Component	Color Fidelity	Color Gamut	Color Quality Scale	Color Coordinate CIE 1931	Color Coordinate CIE 1931	Color Coordinate	Color Coordinate	Color Deviation from Black Body
CCT	CRI	CRI R9	TM30 Rf	TM30 Rg	CQS	x	y	u	v	Δuv
4111 K	80.0	32.9	67.8	117.3	77.3	0.361	0.313	0.239	0.311	0.0267

Beam Details



Beam Intensities from 1-20m

m	1	2	3	4	5	6	7	8	9	10	11	12	13	14	15	16	17	18	19	20
ft	3.3	6.6	9.8	13.1	16.4	19.7	23	26.2	29.5	32.8	36.1	39.4	42.7	45.9	49.2	52.5	55.8	59.1	62.3	65.6
lx	5113	1278	568	320	205	142	104	80	63	51	42	36	30	26	23	20	18	16	14	13
fcd	475.1	118.8	52.8	29.7	19	13.2	9.7	7.4	5.9	4.8	3.9	3.3	2.8	2.4	2.1	1.9	1.6	1.5	1.3	1.2

Intensities in 0° C-plane

0°	2°	4°	6°	8°	10°	12°	14°	16°	18°	20°	22°	24°	26°	28°	30°	32°	34°	36°	38°
5113	5003	4803	4558	4239	3947	3673	3387	3105	2810	2506	2218	1954	1710	1485	1289	1107	916	736	606
100%	98%	94%	89%	83%	77%	72%	66%	61%	55%	49%	43%	38%	33%	29%	25%	22%	18%	14%	12%

Intensities in 90° C-plane

0°	2°	4°	6°	8°	10°	12°	14°	16°	18°	20°	22°	24°	26°	28°	30°	32°	34°	36°	38°
5113	5003	4803	4558	4239	3947	3673	3387	3105	2810	2506	2218	1954	1710	1485	1289	1107	916	736	606
100%	98%	94%	89%	83%	77%	72%	66%	61%	55%	49%	43%	38%	33%	29%	25%	22%	18%	14%	12%

Intensities in 180° C-plane

0°	2°	4°	6°	8°	10°	12°	14°	16°	18°	20°	22°	24°	26°	28°	30°	32°	34°	36°	38°
5113	5063	4933	4758	4489	4193	3875	3528	3181	2839	2494	2127	1776	1489	1243	1030	837	667	534	437
100%	99%	96%	93%	88%	82%	76%	69%	62%	56%	49%	42%	35%	29%	24%	20%	16%	13%	10%	9%

Intensities in 270° C-plane

0°	2°	4°	6°	8°	10°	12°	14°	16°	18°	20°	22°	24°	26°	28°	30°	32°	34°	36°	38°
5113	5063	4933	4758	4489	4193	3875	3528	3181	2839	2494	2127	1776	1489	1243	1030	837	667	534	437
100%	99%	96%	93%	88%	82%	76%	69%	62%	56%	49%	42%	35%	29%	24%	20%	16%	13%	10%	9%

Beam Angle 50%	Field Angle 10%	Cutoff Angle 2,5%	Intensity Ratio in 120° Cone	Intensity Ratio in 90° Cone
39.2°	76.2°	99.6°	98.0%	93.2%