

Color Temperature:



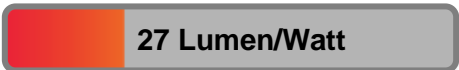
Total Lumen Output:
21586 lm

Light Quality:



Peak:
102182 cd

Light Efficiency:



Power: 795 W



CIE 1931
x: 0.284
y: 0.265

Test: Full On No UV

Date: 10/17/2018

Voltage: 116 V

Current: 6.85 A

Frequency: 60 Hz

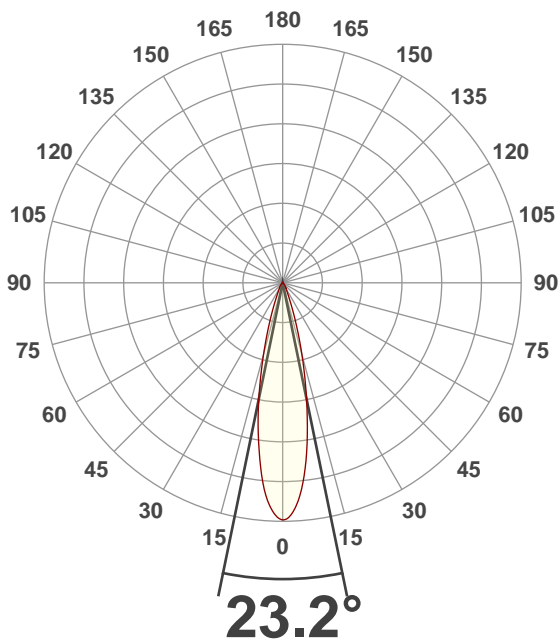
CRI: 78.3

CQS: 87.3

TM30: 78.1

Note:

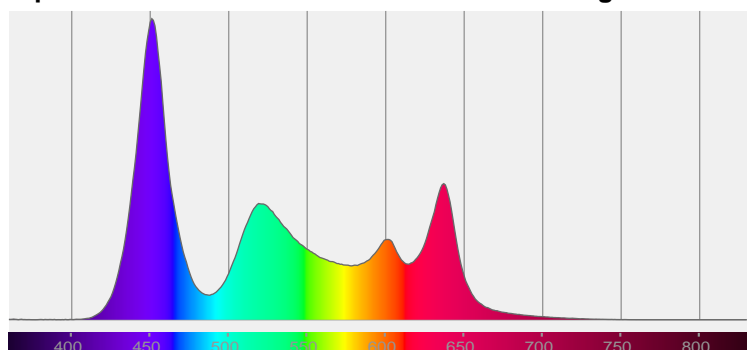
Beam Angle



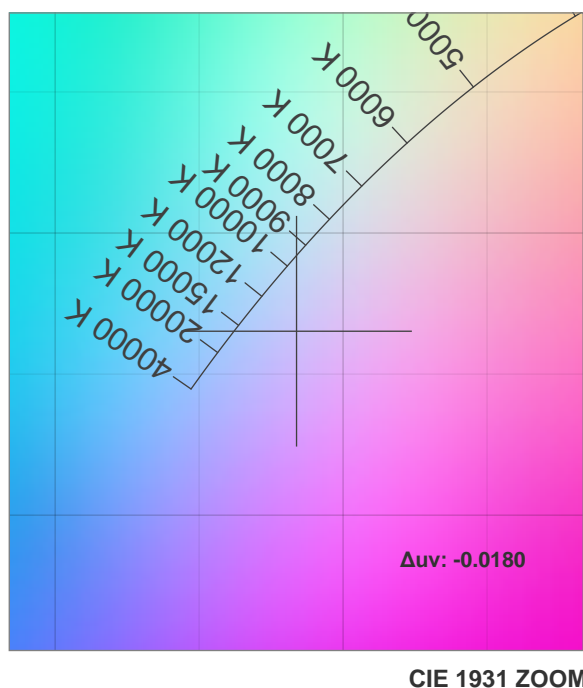
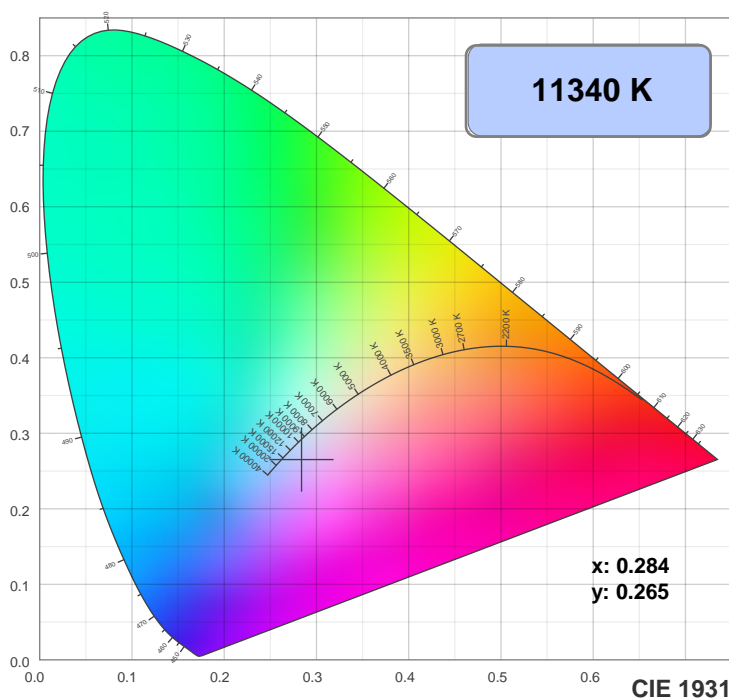
Beam Angle 50%	Field Angle 10%	Cutoff Angle 2.5%
23.2°	42.4°	63.6°

Spectra

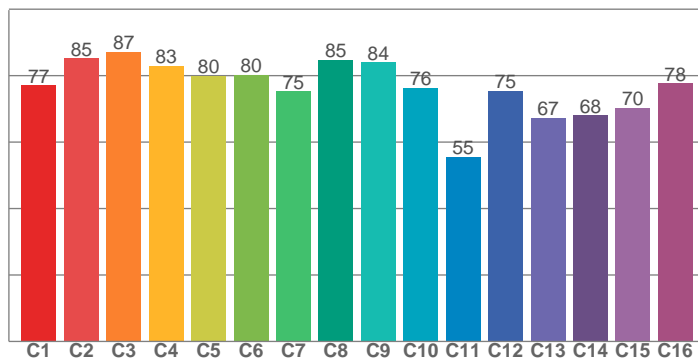
Dominant Wavelength: 434nm



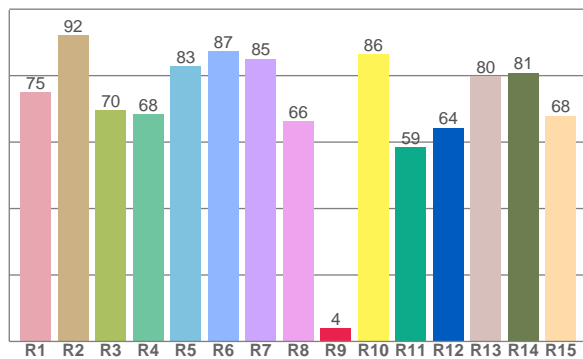
Color Details



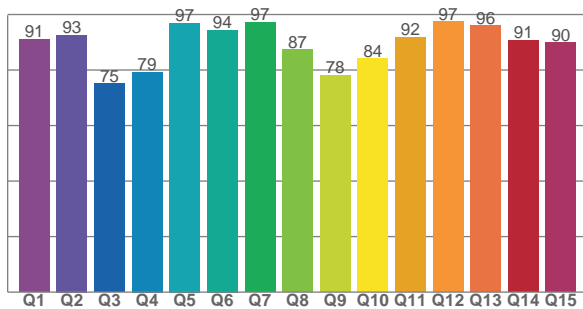
TM30: 78.1



CRI: 78.3 (R1-R8)



CQS: 87.3



CRI R values, only R1-R8 are used to calculate final CRI value

R1	R2	R3	R4	R5	R6	R7	R8	R9	R10	R11	R12	R13	R14	R15
75.0	92.2	69.6	68.5	82.9	87.4	85.1	66.2	3.9	86.5	58.5	64.4	79.9	80.8	67.9

TM30 C Values, 16 binned values out of total of 99 C values

C1	C2	C3	C4	C5	C6	C7	C8	C9	C10	C11	C12	C13	C14	C15	C16
77.1	85.2	87.2	82.9	79.9	80.3	75.3	84.8	84.0	76.4	55.5	75.4	67.3	68.0	70.4	77.7

CQS Q Values

Q1	Q2	Q3	Q4	Q5	Q6	Q7	Q8	Q9	Q10	Q11	Q12	Q13	Q14	Q15
91.1	92.6	75.1	79.3	96.9	94.4	97.2	87.3	78.1	84.1	91.8	97.4	95.9	90.7	89.9

Color Parameters

Color Temperature	Color Rendering Index	Red Component	Color Fidelity	Color Gamut	Color Quality Scale	Color Coordinate CIE 1931	Color Coordinate CIE 1931	Color Coordinate	Color Coordinate	Color Deviation from Black Body
CCT	CRI	CRI R9	TM30 Rf	TM30 Rg	CQS	x	y	u	v	Δuv
11340 K	78.3	3.9	78.1	111.8	87.3	0.284	0.265	0.202	0.283	-0.0180

TM30 Details

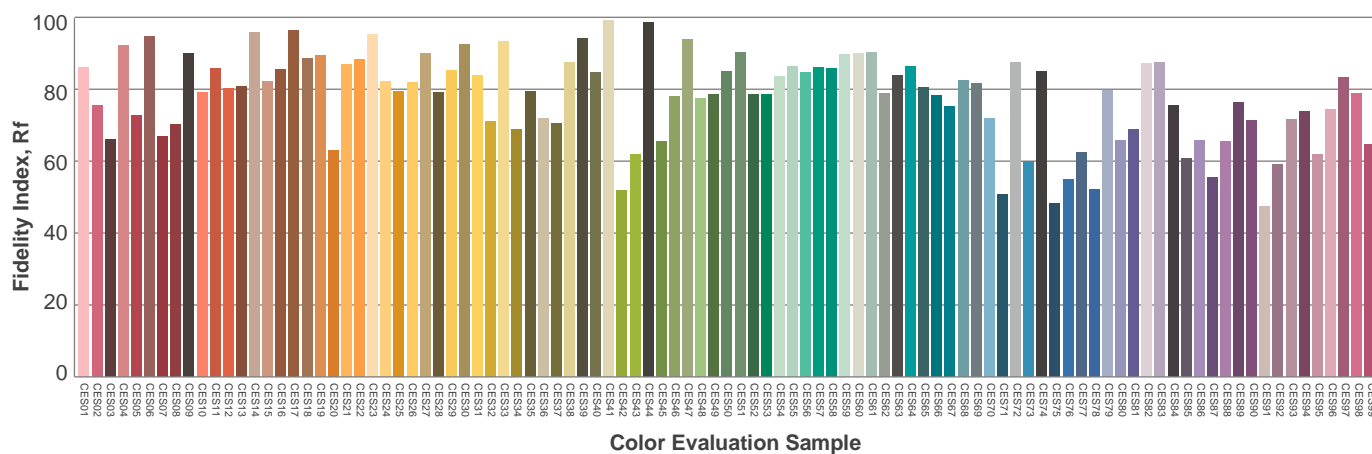
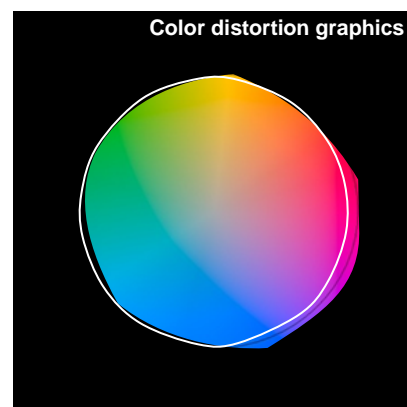
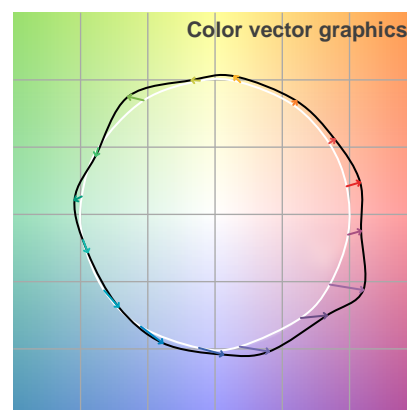
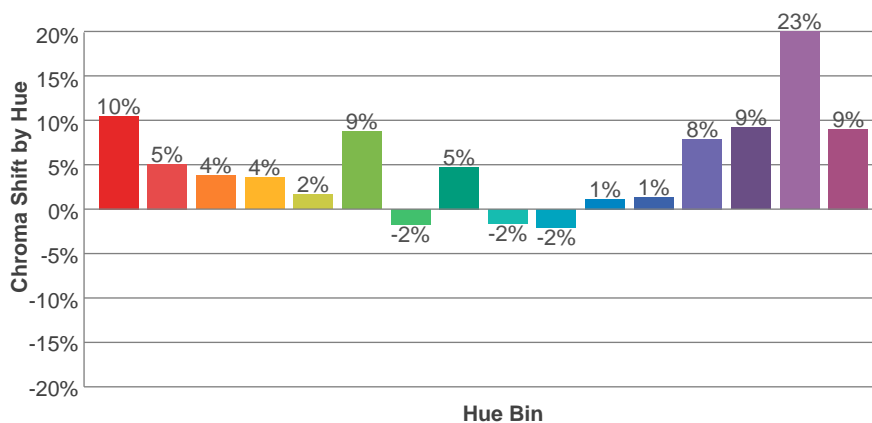
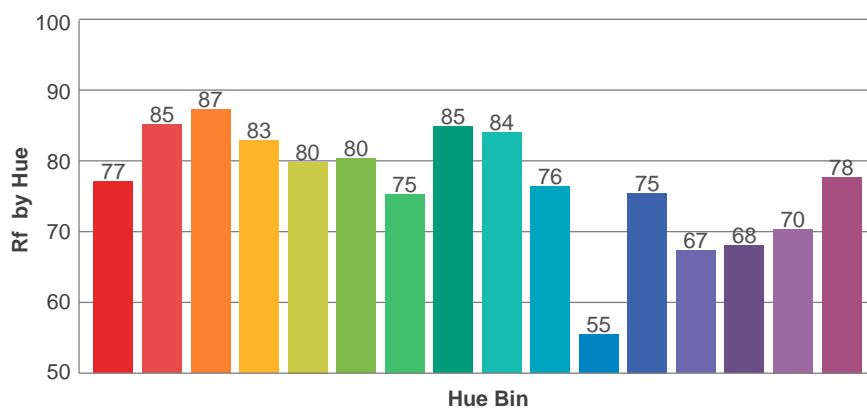
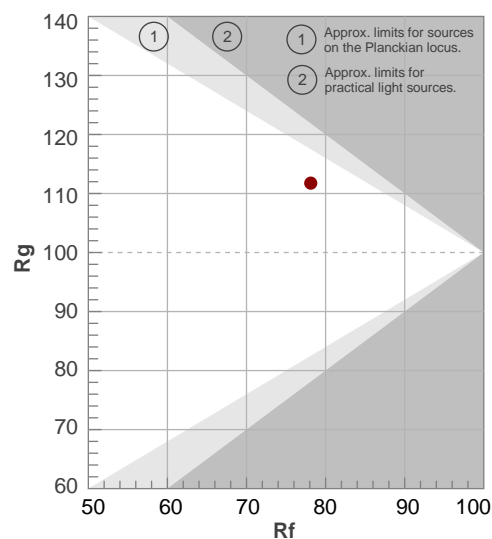
Rf 78.1

Fidelity Index Rf

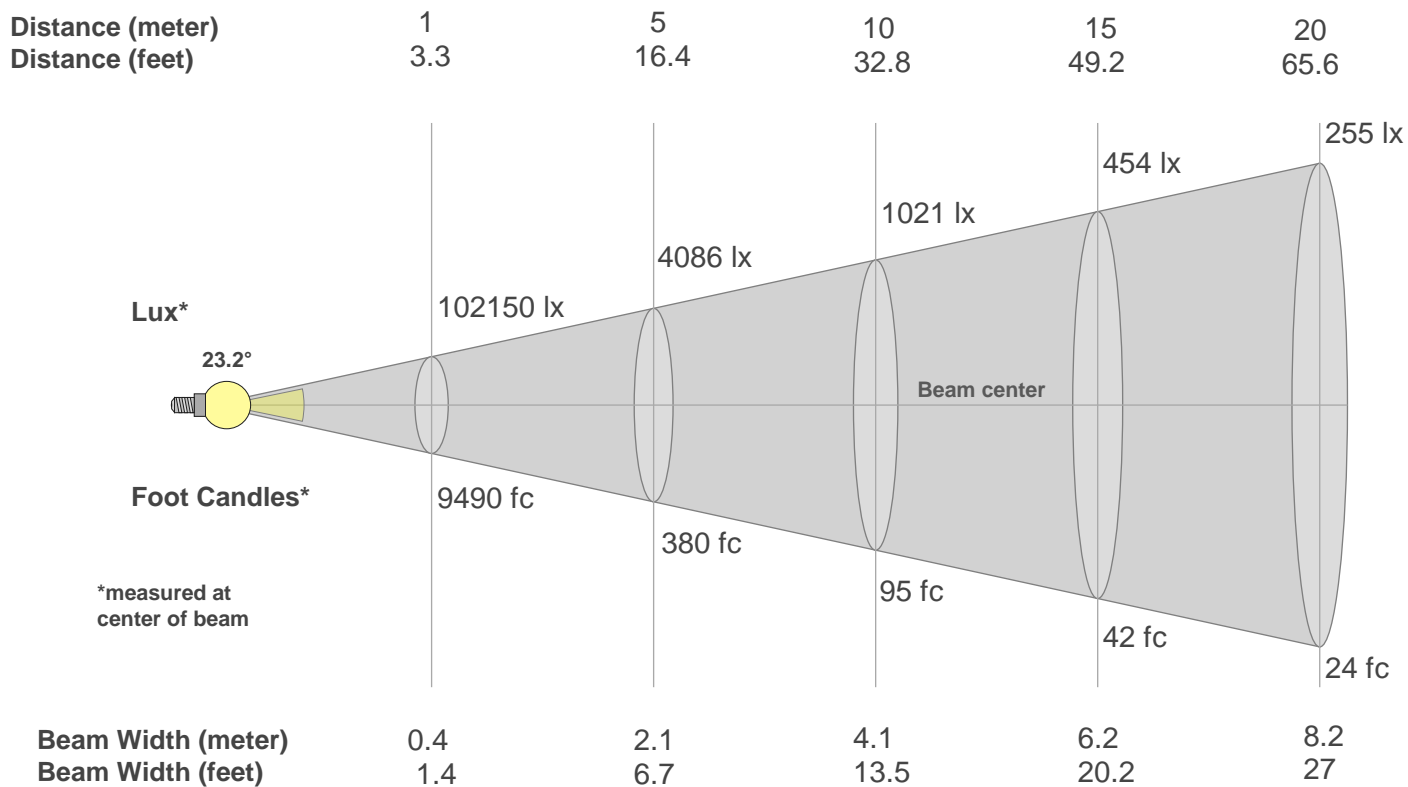
Rg 111.8

Gamut Index Rg

		Graphic shifts (%)	
Hue Bin	R_f	Chroma	Hue
1	77	10%	1%
2	85	5%	0%
3	87	4%	0%
4	83	4%	5%
5	80	2%	6%
6	80	9%	8%
7	75	-2%	6%
8	85	5%	4%
9	84	-2%	10%
10	76	-2%	16%
11	55	1%	20%
12	75	1%	19%
13	67	8%	21%
14	68	9%	17%
15	70	23%	10%
16	78	9%	5%



Beam Details



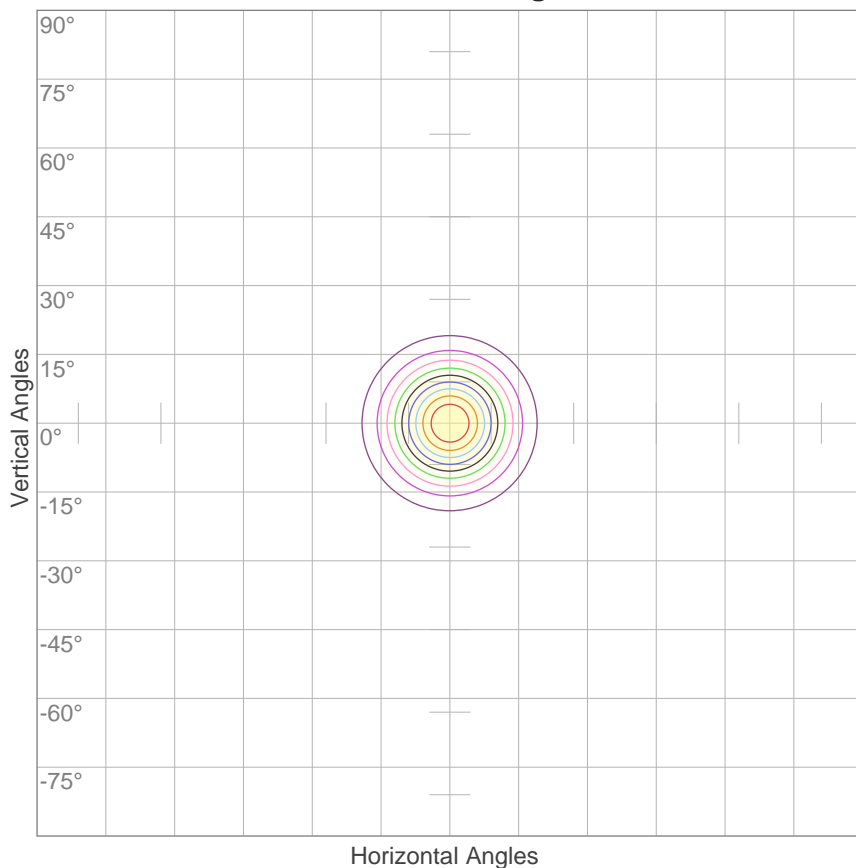
Beam Intensities from 1-20m

m	1	2	3	4	5	6	7	8	9	10	11	12	13	14	15	16	17	18	19	20
ft	3.3	6.6	9.8	13.1	16.4	19.7	23	26.2	29.5	32.8	36.1	39.4	42.7	45.9	49.2	52.5	55.8	59.1	62.3	65.6
lx	102150	25537	11350	6384	4086	2837	2085	1596	1261	1021	844	709	604	521	454	399	353	315	283	255
fc	9490	2372.5	1054.4	593.1	379.6	263.6	193.7	148.3	117.2	94.9	78.4	65.9	56.2	48.4	42.2	37.1	32.8	29.3	26.3	23.7

Beam Angle 50%	Field Angle 10%	Cutoff Angle 2,5%	Intensity Ratio in 120° Cone	Intensity Ratio in 90° Cone
23.2°	42.4°	63.6°	99.7%	96.8%

ISO Diagrams

ISO Candela Diagram



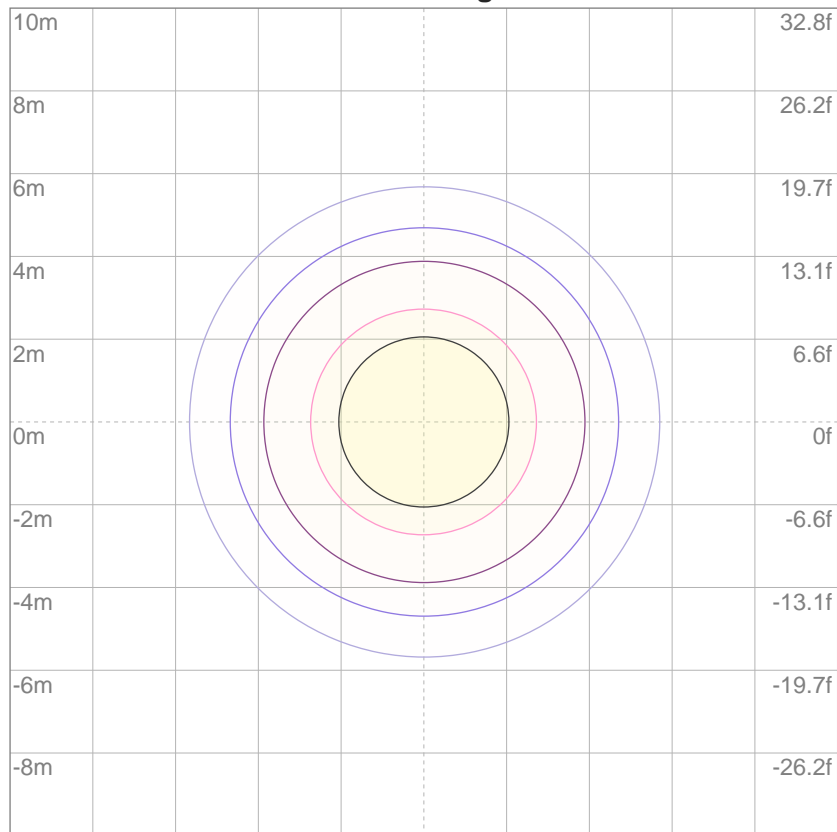
10%	10215 cd
20%	20430 cd
30%	30645 cd
40%	40860 cd
50%	51075 cd
60%	61290 cd
70%	71505 cd
80%	81720 cd
90%	91935 cd

Conditions:

Number of c-planes: 2

Candela at center: 102150 cd

ISO Lux Diagram



3%	30.6 lx
5%	51.1 lx
10%	102 lx
30%	306 lx
50%	511 lx

Conditions:

Number of c-planes: 2

Lux at center: 1021 lx

Lux distribution on a surface when lamp is mounted at 10 meters from the surface.

Mounting Height: 10 meters (33 feet)