

Light efficiency:

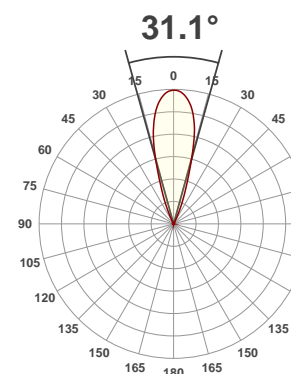
13 Lumen/Watt

Light quality:

CRI: 0.0

Color temperature:

0 K



Product name:

Paladin

Test:

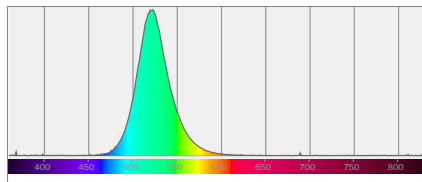
Zoom Out Green

Date:

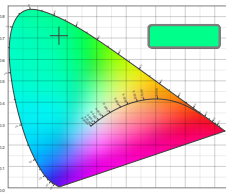
5/1/2017

Output: 3578 lm Power consumption: 276 W Peak: 12251 cd

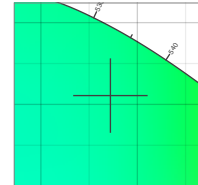
Spectral distribution



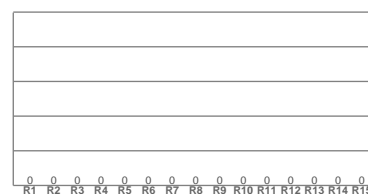
Color coordinates



Zoom color point

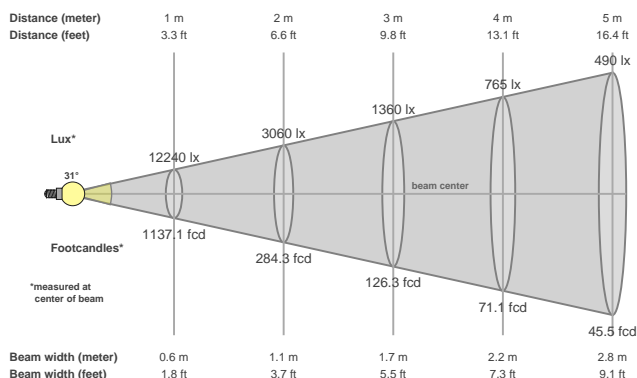


CRI R values



Color temperature	Color rendering index	Red component	Color fidelity	Color gamut	Color quality scale	Color coordinate cie 1931	Color coordinate cie 1931	Color coordinate	Color coordinate	Color divition from black body
CCT	CRI	CRI R9	TM30 Rf	TM30 Rg	CQS	x	y	u	v	Δuv
0 K	0.0	0.0	0.0	0.0	0.0	0.172	0.711	0.062	0.381	n/a

Beam details



Beam angels

Beam angle 50%	Field angle 10%	Cutoff angle 2,5%
31.1°	47.6°	55.2°

Beam intensities

Peak intensity	Int. ratio in 120° cone	Int. ratio in 90° cone
12251 cd	1.0%	0.9%

Power

Power	Power factor	Power frequency
276 W	1.0	0 Hz

Nominal voltage	Voltage	Current
230 V	115 V	2.41 A

Beam intensities from 1-20m

1m	2m	3m	4m	5m	6m	7m	8m	9m	10m	11m	12m	13m	14m	15m	16m	17m	18m	19m	20m
3.3ft	6.6ft	9.8ft	13.1ft	16.4ft	19.7ft	23ft	26.2ft	29.5ft	32.8ft	36.1ft	39.4ft	42.7ft	45.9ft	49.2ft	52.5ft	55.8ft	59.1ft	62.3ft	65.6ft
12240lx	3060lx	1360lx	765lx	490lx	340lx	250lx	191lx	151lx	122lx	101lx	85lx	72lx	62lx	54lx	48lx	42lx	38lx	34lx	31lx
1137.1fcd	284.3fcd	126.3fcd	71.1fcd	45.5fcd	31.6fcd	23.2fcd	17.8fcd	14fcd	11.4fcd	9.4fcd	7.9fcd	6.7fcd	5.8fcd	5.1fcd	4.4fcd	3.9fcd	3.5fcd	3.1fcd	2.8fcd