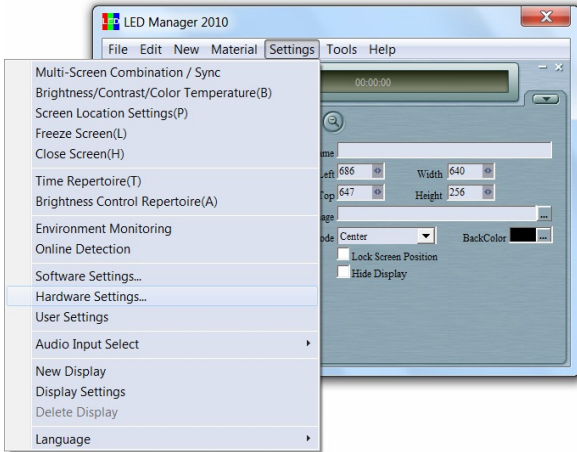


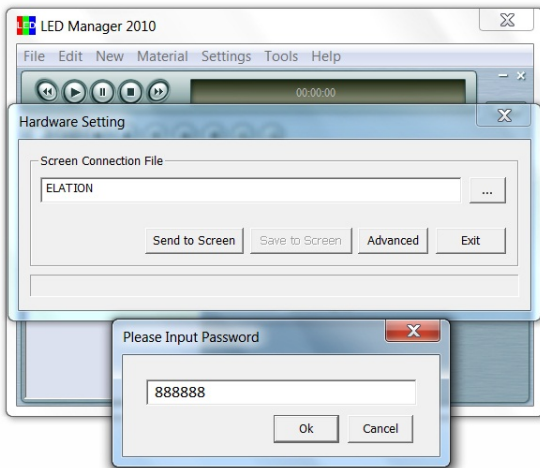


LED Manager 2010 Quick Start Manual

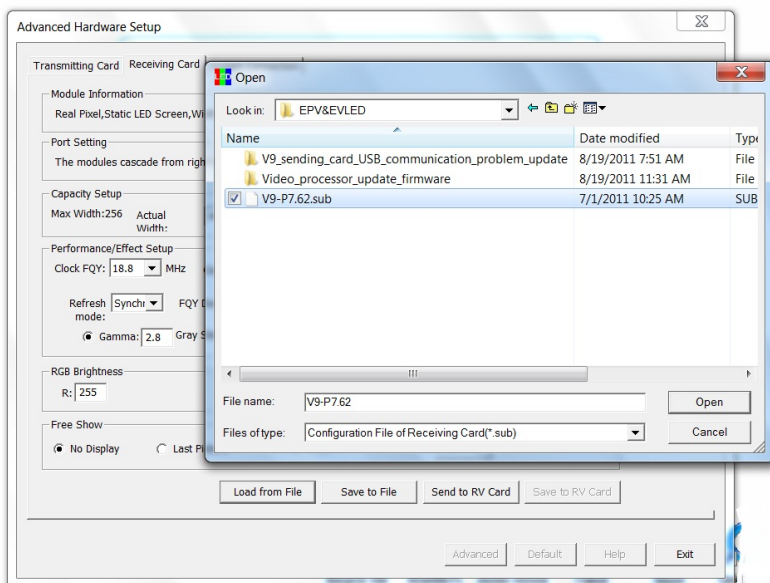


Please install LED Manager 2010 from the “.exe” file that is provided in the set up CD.

After installing & launching the software proceed to “Hardware Settings” from the “Settings” menu bar.



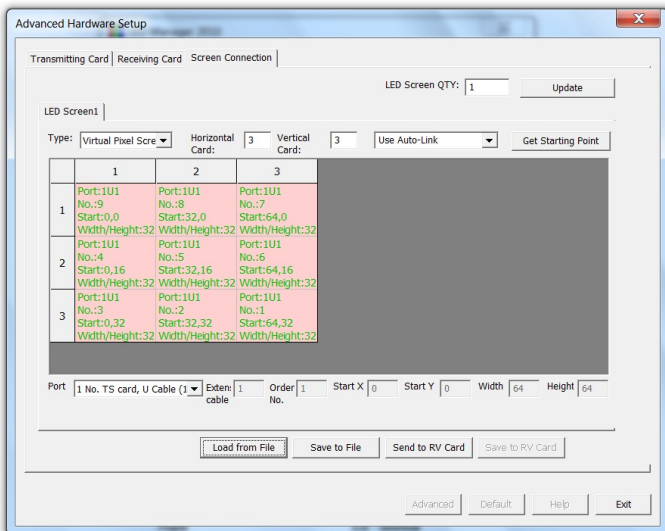
Once in “Hardware Settings” a window will open that will require an alphabetic password “Elation” then a second window will appear witch requires a numeric password “888888”



Once in “Advanced Hardware Setup” proceed to “Receiving Card” and load the “V9-P7.62.sub” file that was provided on the elation set up CD.

After the file has been loaded please click on “Send to RV Card” and finally “Save to RV Card”.

A confirmation window will appear indicating that the file has been sent successfully.



Once the “.sub” file has been loaded to the system then proceed to “Screen Correction” window to create the “map”.

1st Please locate the “Horizontal Card” and “Vertical Card”. These numbers represent the number of panels both horizontally as well as vertically.

2nd Next locate panel Num.1 (Panel number 1 is the first panel that the processor is connected to via cat5).

3rd You must follow the physical data connection in order to map properly.

4th A typical data connection flow starts on the bottom right or bottom left, then proceeds horizontally across to then jump up to the next row running back across creating a square “S” configuration.

5th Once the correct map has been created (please review the correct “order number” located on each panel in the map window) click on “Send to RV Card” and then “Save to RV Card”. This is to ensure that when you power down and then power up the map is stored in the system.

Quick tips....

1st The Cat5 cable from the processor to the first panel should be on connector LAN 1U.

2nd Please verify that all data & power jumper cables are connected properly.

3rd The recommended first cable length should not exceed 300ft.

4th LED Manager 2010 is best operated in a Windows 32bit platform.

5th Make sure that the usb driver is properly installed and that communication between the processor and the computer is established before mapping process is commenced. (Driver will be automatically loaded when software is installed)