



ART 1024

TOUCH SENSITIVE, WALL MOUNT, DMX LIGHTING CONTROLLER.



The next generation lighting controller optimized for the architectural lighting industry. Easily create your own "ART" with the new ART-1024 wall mount controller from Elation! The Art 1024 includes 2 lighting control software: the already famous myDMX software plus the new ART1024 software that contains the ease of the Easy Stand Alone software and the new powerful tools required by the last LED fixture.

SPECIFICATIONS

- User interface 14 buttons, 1 fader, 28 leds - Touch Sensitive Keypad (extension socket rear connectors - 2x20 pins)
- Programming software included to run on PC
- SD Card Mini SD (included) card for stand alone memory use (Built-in features) & (front access connections - open cover)
- RESET Push button for reset operation (front access connections - open cover)
- RS232 RS232 serial communication for external synchronization (extension socket rear connectors - 2x20 pins)
- Output relay Automatic stand by 5V signal (extension socket rear connectors - 2x20 pins)
- Real time clock and calendar, 10 minutes saving without power (Built-in features)
- IR Receiver* Easy learning triggering from any 36Khz remote control (Built-in features)
- DMX Output #1 Universe 1, 512 channels DMX512 Output (screw-terminal rear connector - 9 pins)
- DMX Output #2* Universe 2, 512 channels DMX512 Output (extension socket rear connectors - 2x20 pins)
- USB USB 2.0 communication for PC/software (extension socket rear connectors - 2x20 pins)
- Ethernet** Advanced networking features (front access connections - open cov

www.elationlighting.com

Toll Free (866) 245-6726

Specifications are preliminary & are subject to change without notice
©Elation Professional • Los Angeles, Ca USA • Kerkade, Netherlands



ART 1024

TOUCH SENSITIVE, WALL MOUNT, DMX LIGHTING CONTROLLER.

Package Content:

Interface, SD card, user manual, cdrom, USB cable, power supply (*)

- PC Requirement Computer using Windows XP/VISTA 32 bits and USB 2.0
- PC Software Included: ART 1024
- Options Dedicated remote control (**), Ethernet extension (**)
- Safety Standards EC, EMC, ROHS
- Temperature 14°F to 122°F (-10°C to 50°C)
- Dimensions 6.62" x 5.04" x 0.45" Complete package (168 x 128 x 11,5mm)
- Weight 0.44lbs. (0,2kg) Complete package 1.32lbs. (0,6kg)
- Power Supply 9VDC 0.65A, Supplied (screw-terminal rear connector - 9 pins)
- Ports 1,2,3,4 4 Contact closure inputs, connect to ground for operating (extension socket rear connectors - 2x20 pins)
- Ports 5,6,7,8 4 Contact closure inputs, connect to ground for operating (screw-terminal rear connector - 9 pins) & (extension socket rear connectors - 2x20 pins)
- Microphone** Built-in microphone for sound to light effect (Built-in features)
- Audio input** Audio input for sound to light effect (extension socket rear connectors - 2x20 pins)

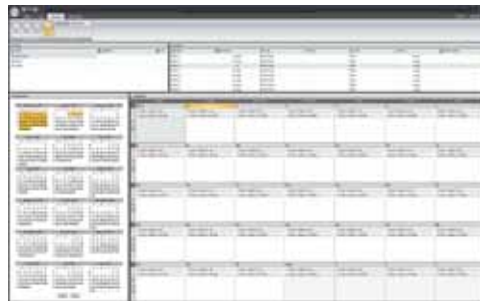
(**) Advanced networking features available in middle of 2009
Some future features will require a firmware upgrade. Others may require a free exchange of the electronic card.



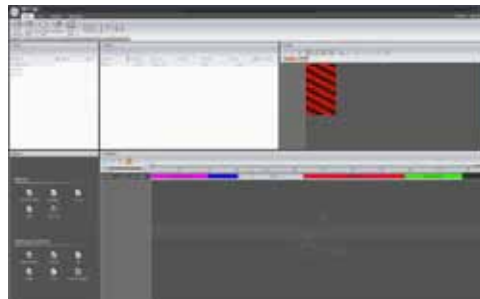
www.elationlighting.com

Toll Free (866) 245-6726

Specifications are preliminary & are subject to change without notice
©Elation Professional • Los Angeles, Ca USA • Kerkrade, Netherlands



Calendar Screen



Editor Screen



Stand Alone Screen