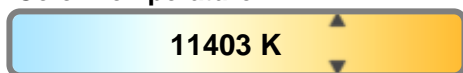


Color Temperature:



Total Lumen Output:
6368 lm

Light Quality:

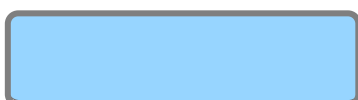


Peak:
55670 cd

Light Efficiency:



Power: 340 W



CIE 1931
x: 0.275
y: 0.280

Test: Zoom 50%

Date: 7/25/2018

Voltage: 109 V

Current: 3.14 A

Frequency: 60 Hz

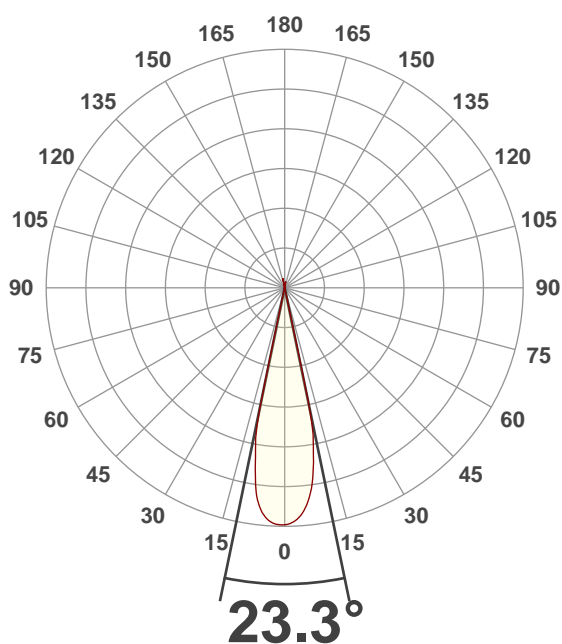
CRI: 77.3

CQS: 71.3

TM30: 72.0

Note:

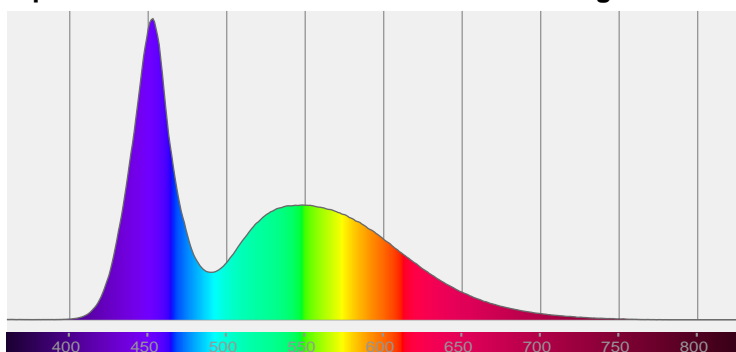
Beam Angle



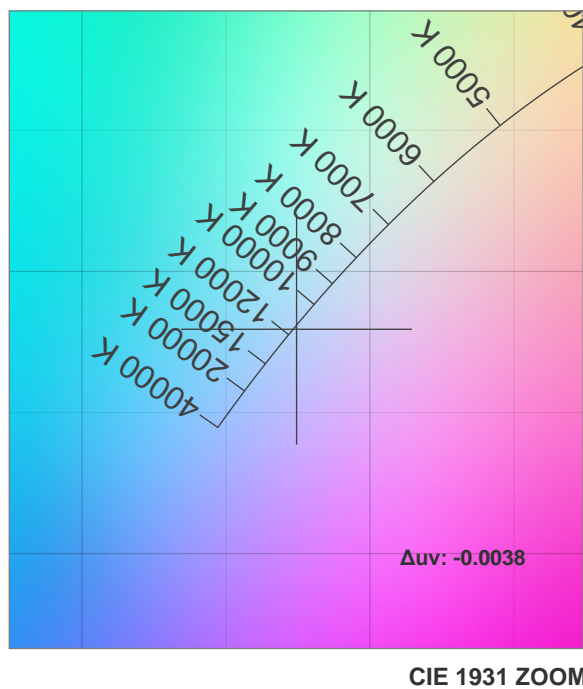
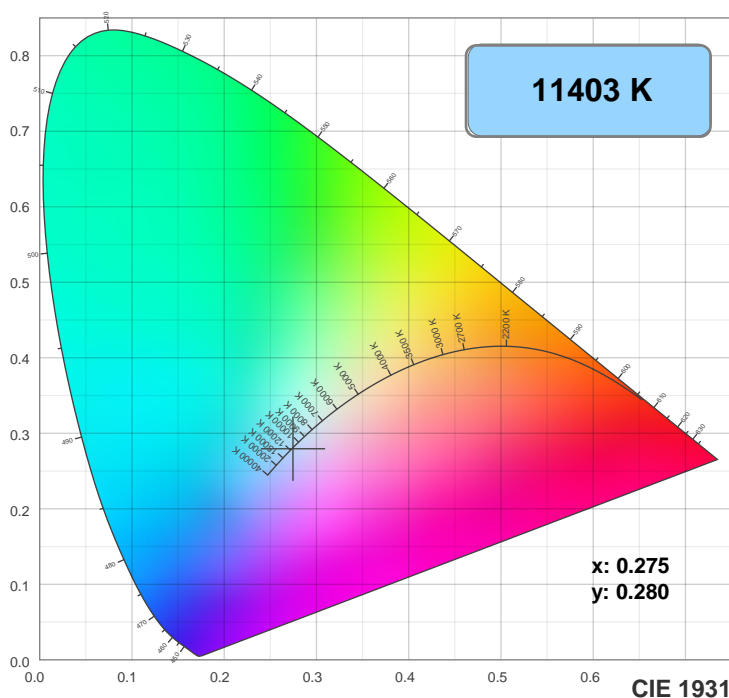
Beam Angle 50%	Field Angle 10%	Cutoff Angle 2.5%
23.3°	26°	26.5°

Spectra

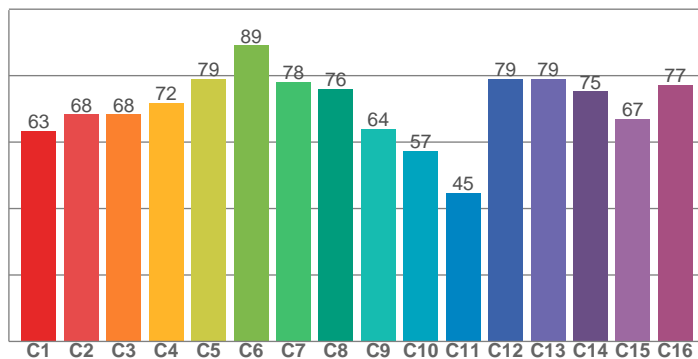
Dominant Wavelength: 473nm



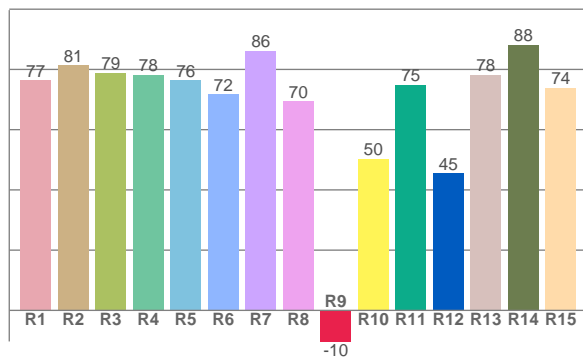
Color Details



TM30: 72.0



CRI: 77.3 (R1-R8)



CRI R values, only R1-R8 are used to calculate final CRI value

R1	R2	R3	R4	R5	R6	R7	R8	R9	R10	R11	R12	R13	R14	R15
76.5	81.3	78.9	78.2	76.3	71.8	86.2	69.5	-10.3	50.3	74.9	45.4	78.2	88.2	73.9

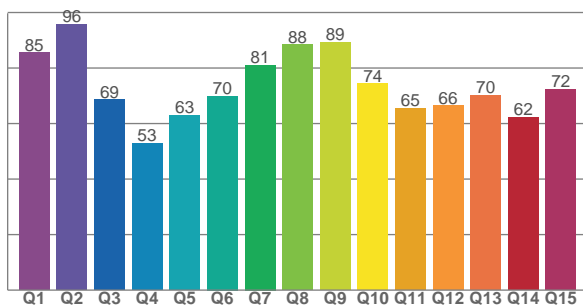
TM30 C Values, 16 binned values out of total of 99 C values

C1	C2	C3	C4	C5	C6	C7	C8	C9	C10	C11	C12	C13	C14	C15	C16
63.4	68.3	68.4	71.8	79.0	89.1	78.1	76.0	63.9	57.3	44.8	79.1	75.2	66.9	77.2	

CQS Q Values

Q1	Q2	Q3	Q4	Q5	Q6	Q7	Q8	Q9	Q10	Q11	Q12	Q13	Q14	Q15
85.5	95.7	68.7	52.9	63.0	69.9	81.1	88.4	89.3	74.5	65.5	66.5	70.2	62.3	72.4

CQS: 71.3



Color Parameters

Color Temperature	Color Rendering Index	Red Component	Color Fidelity	Color Gamut	Color Quality Scale	Color Coordinate CIE 1931	Color Coordinate CIE 1931	Color Coordinate	Color Coordinate	Color Deviation from Black Body
CCT	CRI	CRI R9	TM30 Rf	TM30 Rg	CQS	x	y	u	v	Δuv
11403 K	77.3	-10.3	72.0	91.0	71.3	0.275	0.280	0.189	0.289	-0.0038

TM30 Details

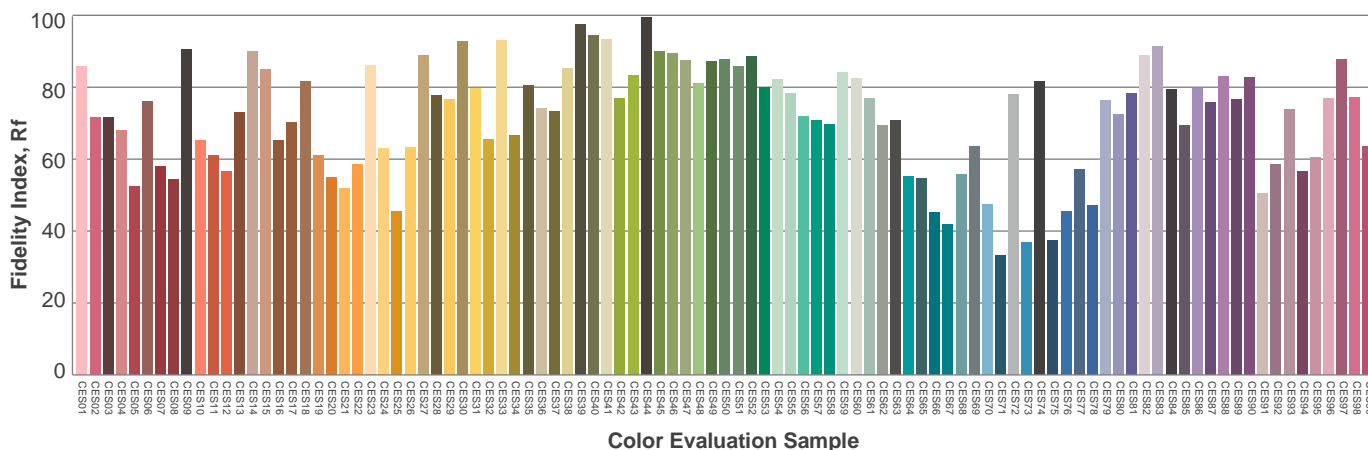
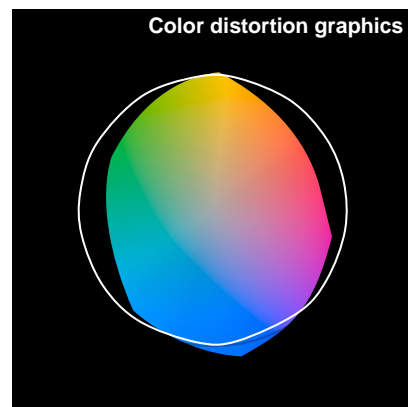
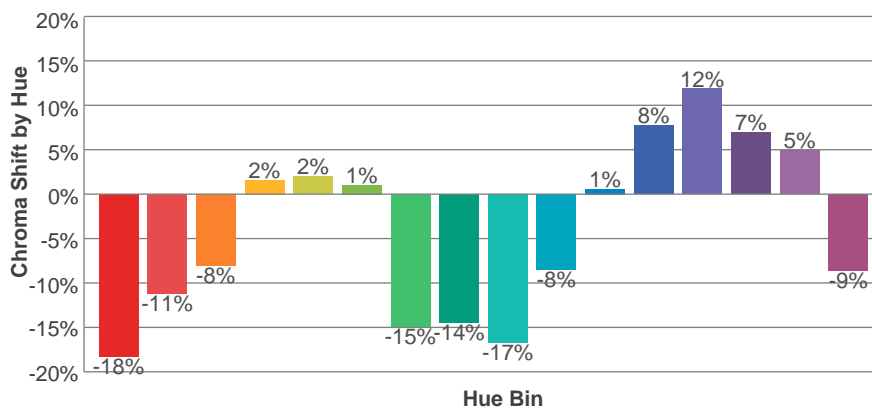
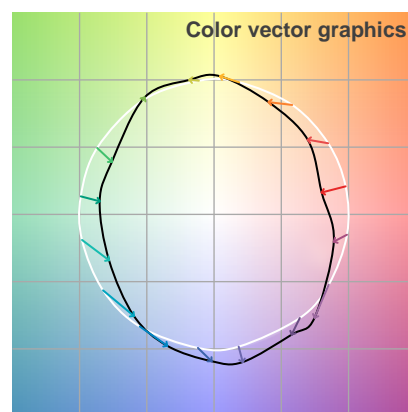
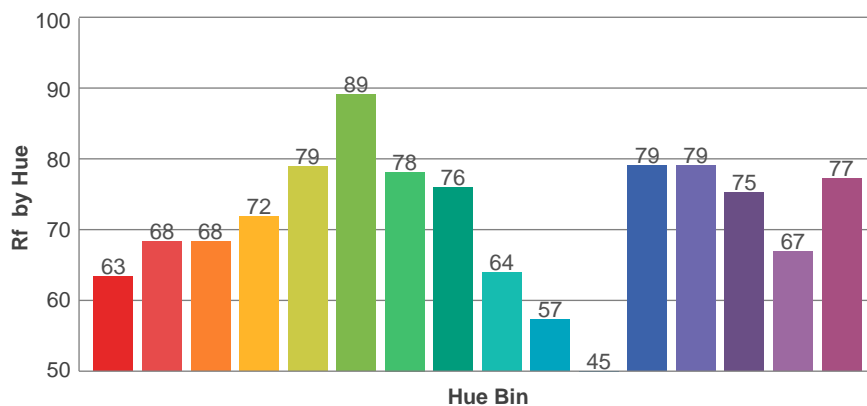
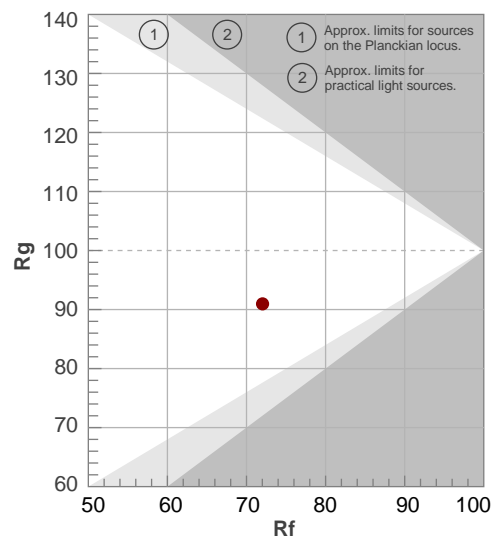
Rf 72.0

Fidelity Index Rf

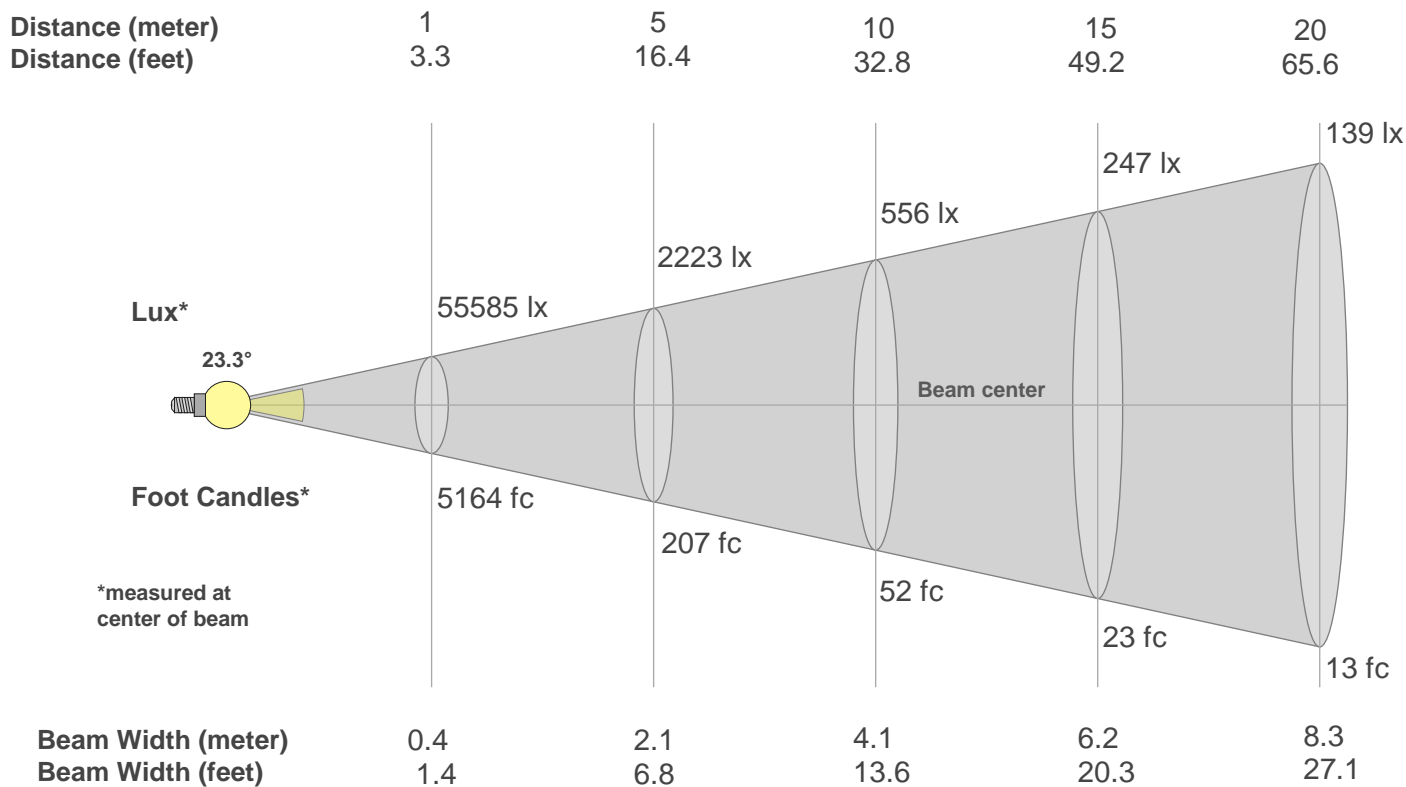
Rg 91.0

Gamut Index Rg

Hue Bin	R _f	Graphic shifts (%)	
		Chroma	Hue
1	63	-18%	-1%
2	68	-11%	11%
3	68	-8%	16%
4	72	2%	15%
5	79	2%	7%
6	89	1%	-2%
7	78	-15%	2%
8	76	-14%	1%
9	64	-17%	19%
10	57	-8%	29%
11	45	1%	25%
12	79	8%	12%
13	79	12%	1%
14	75	7%	-12%
15	67	5%	-26%
16	77	-9%	-7%



Beam Details



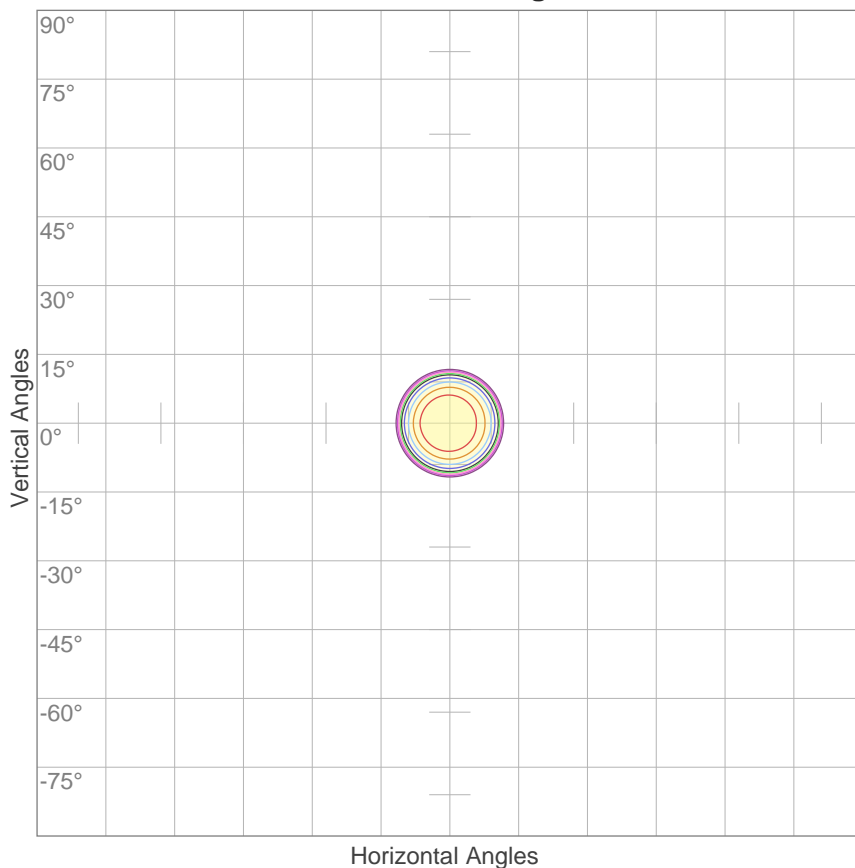
Beam Intensities from 1-20m

m	1	2	3	4	5	6	7	8	9	10	11	12	13	14	15	16	17	18	19	20
ft	3.3	6.6	9.8	13.1	16.4	19.7	23	26.2	29.5	32.8	36.1	39.4	42.7	45.9	49.2	52.5	55.8	59.1	62.3	65.6
lx	55585	13896	6176	3474	2223	1544	1134	869	686	556	459	386	329	284	247	217	192	172	154	139
fc	5164.1	1291	573.8	322.8	206.6	143.4	105.4	80.7	63.8	51.6	42.7	35.9	30.6	26.3	23	20.2	17.9	15.9	14.3	12.9

Beam Angle 50%	Field Angle 10%	Cutoff Angle 2,5%	Intensity Ratio in 120° Cone	Intensity Ratio in 90° Cone
23.3°	26°	26.5°	100.0%	100.0%

ISO Diagrams

ISO Candela Diagram



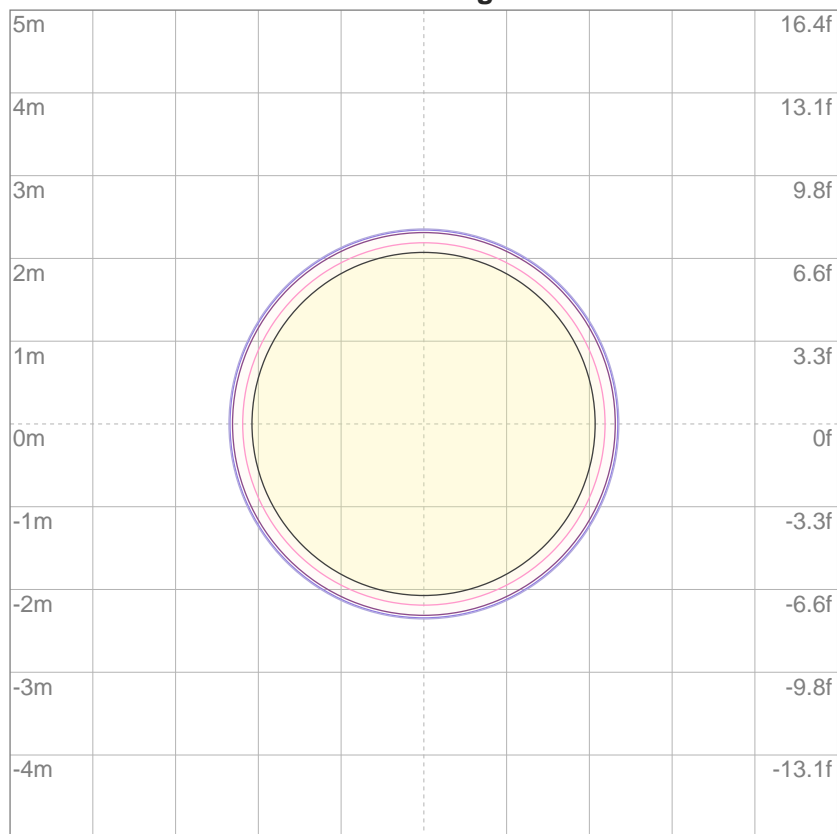
10%	5559 cd
20%	11117 cd
30%	16676 cd
40%	22234 cd
50%	27793 cd
60%	33351 cd
70%	38910 cd
80%	44468 cd
90%	50027 cd

Conditions:

Number of c-planes: 2

Candela at center: 55585 cd

ISO Lux Diagram



3%	16.7 lx
5%	27.8 lx
10%	55.6 lx
30%	167 lx
50%	278 lx

Conditions:

Number of c-planes: 2

Lux at center: 556 lx

*Lux distribution on a surface
when lamp is mounted at 10
meters from the surface.*